

NOLC1 Antibody (internal region)
Peptide-affinity purified goat antibody
Catalog # AF3329a

Specification

NOLC1 Antibody (internal region) - Product Information

Application	IHC
Primary Accession	Q14978
Other Accession	NP_004732.2 , 9221 , 70769 (mouse) , 64896 (rat)
Reactivity	Human
Predicted	Mouse, Rat, Dog
Host	Goat
Clonality	Polyclonal
Concentration	0.5 mg/ml
Isotype	IgG
Calculated MW	73603

NOLC1 Antibody (internal region) - Additional Information

Gene ID [9221](#)

Other Names

Nucleolar and coiled-body phosphoprotein 1, 140 kDa nucleolar phosphoprotein, Nopp140, Hepatitis C virus NS5A-transactivated protein 13, HCV NS5A-transactivated protein 13, Nucleolar 130 kDa protein, Nucleolar phosphoprotein p130, NOLC1, KIAA0035, NS5ATP13

Format

0.5 mg/ml in Tris saline, 0.02% sodium azide, pH7.3 with 0.5% bovine serum albumin

Storage

Maintain refrigerated at 2-8°C for up to 6 months. For long term storage store at -20°C in small aliquots to prevent freeze-thaw cycles.

Precautions

NOLC1 Antibody (internal region) is for research use only and not for use in diagnostic or therapeutic procedures.

NOLC1 Antibody (internal region) - Protein Information

Name NOLC1 ([HGNC:15608](#))

Function

Nucleolar protein that acts as a regulator of RNA polymerase I by connecting RNA polymerase I with enzymes responsible for ribosomal processing and modification (PubMed:10567578, PubMed:26399832). Required for

neural crest specification: following monoubiquitination by the BCR(KBTBD8) complex, associates with TCOF1 and acts as a platform to connect RNA polymerase I with enzymes responsible for ribosomal processing and modification, leading to remodel the translational program of differentiating cells in favor of neural crest specification (PubMed:26399832). Involved in nucleogenesis, possibly by playing a role in the maintenance of the fundamental structure of the fibrillar center and dense fibrillar component in the nucleolus (PubMed:9016786). It has intrinsic GTPase and ATPase activities (PubMed:9016786).

Cellular Location

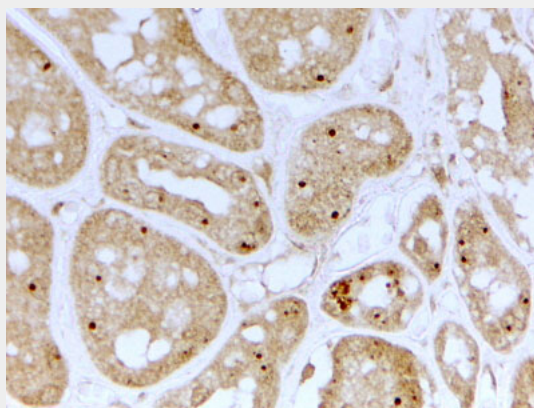
Nucleus, nucleolus. Cytoplasm. Note=Shuttles between the nucleolus and the cytoplasm. At telophase it begins to assemble into granular-like pre-nucleolar bodies which are subsequently relocated to nucleoli at the early G1-phase.

NOLC1 Antibody (internal region) - Protocols

Provided below are standard protocols that you may find useful for product applications.

- [Western Blot](#)
- [Blocking Peptides](#)
- [Dot Blot](#)
- [Immunohistochemistry](#)
- [Immunofluorescence](#)
- [Immunoprecipitation](#)
- [Flow Cytometry](#)
- [Cell Culture](#)

NOLC1 Antibody (internal region) - Images



AF3329a (2 µg/ml) staining of paraffin embedded Human Kidney. Steamed antigen retrieval with citrate buffer pH 6, HRP-staining.

NOLC1 Antibody (internal region) - References

Localization of Nopp140 within mammalian cells during interphase and mitosis. Thiry M, Cheutin T, Lamaye F, Thelen N, Meier UT, O'Donohue MF, Ploton D, Histochemistry and cell biology 2009 Aug 132 (2): 129-40. PMID: 19381672