

**CYPOR Antibody (internal region)**  
Peptide-affinity purified goat antibody  
Catalog # AF3317a

**Specification**

---

**CYPOR Antibody (internal region) - Product Information**

Application	WB, IHC
Primary Accession	<a href="#">P16435</a>
Other Accession	<a href="#">NP_000932.3</a> , <a href="#">5447</a> , <a href="#">18984 (mouse)</a> , <a href="#">29441 (rat)</a>
Reactivity	Human, Mouse, Rat
Predicted	Rabbit, Pig, Dog
Host	Goat
Clonality	Polyclonal
Concentration	0.5 mg/ml
Isotype	IgG
Calculated MW	76690

**CYPOR Antibody (internal region) - Additional Information**

**Gene ID** 5447

**Other Names**

NADPH--cytochrome P450 reductase, CPR, P450R, 1.6.2.4, POR, CYPOR

**Format**

0.5 mg/ml in Tris saline, 0.02% sodium azide, pH7.3 with 0.5% bovine serum albumin

**Storage**

Maintain refrigerated at 2-8°C for up to 6 months. For long term storage store at -20°C in small aliquots to prevent freeze-thaw cycles.

**Precautions**

CYPOR Antibody (internal region) is for research use only and not for use in diagnostic or therapeutic procedures.

**CYPOR Antibody (internal region) - Protein Information**

**Name** POR {ECO:0000255|HAMAP-Rule:MF\_03212}

**Synonyms** CYPOR

**Function**

This enzyme is required for electron transfer from NADP to cytochrome P450 in microsomes. It can also provide electron transfer to heme oxygenase and cytochrome B5.

**Cellular Location**

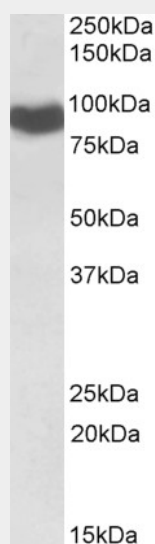
Endoplasmic reticulum membrane {ECO:0000255|HAMAP-Rule:MF\_03212}; Single-pass membrane protein {ECO:0000255|HAMAP-Rule:MF\_03212}; Cytoplasmic side {ECO:0000255|HAMAP-Rule:MF\_03212}

### CYPOR Antibody (internal region) - Protocols

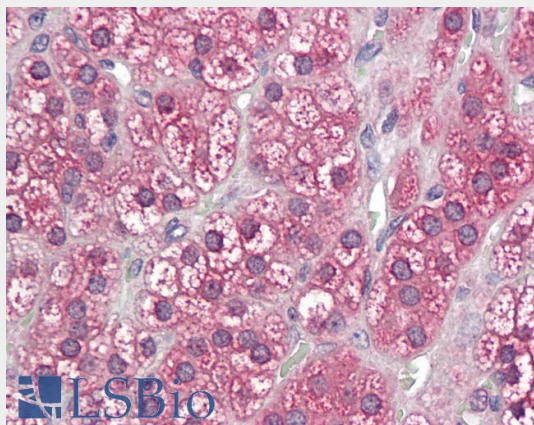
Provided below are standard protocols that you may find useful for product applications.

- [Western Blot](#)
- [Blocking Peptides](#)
- [Dot Blot](#)
- [Immunohistochemistry](#)
- [Immunofluorescence](#)
- [Immunoprecipitation](#)
- [Flow Cytometry](#)
- [Cell Culture](#)

### CYPOR Antibody (internal region) - Images



AF3317a (0.1  $\mu\text{g/ml}$ ) staining of Rat Liver lysate (35  $\mu\text{g}$  protein in RIPA buffer). Detected by chemiluminescence.



AF3317a (3.75  $\mu\text{g/ml}$ ) staining of paraffin embedded Human Adrenal Gland. Steamed antigen

retrieval with citrate buffer pH 6, AP-staining.

### **CYPOR Antibody (internal region) - References**

Cytokeratin 20-positive hepatocellular carcinoma. Fanni D, Nemolato S, Ganga R, Senes G, Gerosa C, Van Eyken P, Geboes K, Faa G, European journal of histochemistry : EJH 53 (4): 269-73. PMID: 20007098