

MGAT1 Antibody (internal region)
Peptide-affinity purified goat antibody
Catalog # AF3310a

Specification

MGAT1 Antibody (internal region) - Product Information

Application	WB
Primary Accession	P26572
Other Accession	NP_002397.2 , 4245 , 17308 (mouse) , 81519 (rat)
Reactivity	Human
Predicted	Mouse, Rat, Dog
Host	Goat
Clonality	Polyclonal
Concentration	0.5 mg/ml
Isotype	IgG
Calculated MW	50878

MGAT1 Antibody (internal region) - Additional Information

Gene ID 4245

Other Names

Alpha-1, 3-mannosyl-glycoprotein 2-beta-N-acetylglucosaminyltransferase, 2.4.1.101, N-glycosyl-oligosaccharide-glycoprotein N-acetylglucosaminyltransferase I, GNT-I, GlcNAc-T I, MGAT1, GGNT1, GLCT1, GLYT1, MGAT

Format

0.5 mg/ml in Tris saline, 0.02% sodium azide, pH7.3 with 0.5% bovine serum albumin

Storage

Maintain refrigerated at 2-8°C for up to 6 months. For long term storage store at -20°C in small aliquots to prevent freeze-thaw cycles.

Precautions

MGAT1 Antibody (internal region) is for research use only and not for use in diagnostic or therapeutic procedures.

MGAT1 Antibody (internal region) - Protein Information

Name MGAT1

Synonyms GGNT1, GLCT1, GLYT1, MGAT

Function

Initiates complex N-linked carbohydrate formation. Essential for the conversion of high-mannose to hybrid and complex N-glycans.

Cellular Location

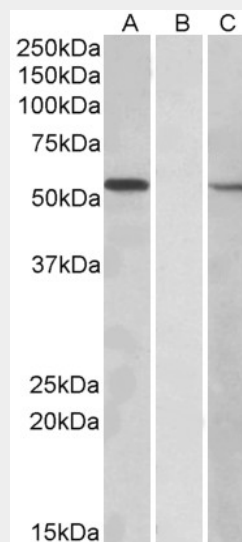
Golgi apparatus membrane; Single-pass type II membrane protein. Cytoplasm, perinuclear region.
Note=Co-localizes with BRI3 isoform 1 at the perinuclear region.

MGAT1 Antibody (internal region) - Protocols

Provided below are standard protocols that you may find useful for product applications.

- [Western Blot](#)
- [Blocking Peptides](#)
- [Dot Blot](#)
- [Immunohistochemistry](#)
- [Immunofluorescence](#)
- [Immunoprecipitation](#)
- [Flow Cytometry](#)
- [Cell Culture](#)

MGAT1 Antibody (internal region) - Images



HEK293 lysate (10ug protein in RIPA buffer) overexpressing Human MGAT1 with C-terminal MYC tag probed with AF3310a (1ug/ml) in Lane A and probed with anti-MYC Tag (1/1000) in lane C. Mock-transfected HEK293 probed with AF3310a (1mg/ml) in Lane B. Primary incubations were for 1 hour. Detected by chemiluminescence.

MGAT1 Antibody (internal region) - Background

Reported variants represent identical protein: NP_002397.2, NP_001108090.1, NP_001108091.1, NP_001108092.1, NP_001108089.1.

MGAT1 Antibody (internal region) - References

Genetic association studies of methamphetamine use disorders: A systematic review and synthesis. Bousman CA, Glatt SJ, Everall IP, Tsuang MT, American journal of medical genetics. Part B, Neuropsychiatric genetics : the official publication of the International Society of Psychiatric Genetics 2009 Dec 150B (8): 1025-49. PMID: 19219857