

CIRBP (aa 81-91) Antibody (internal region)
Peptide-affinity purified goat antibody
Catalog # AF3286a

Specification

CIRBP (aa 81-91) Antibody (internal region) - Product Information

Application	WB
Primary Accession	Q14011
Other Accession	NP_001271.1 , 1153 , 12696 (mouse) , 81825 (rat)
Reactivity	Mouse, Rat
Predicted	Human, Dog
Host	Goat
Clonality	Polyclonal
Concentration	0.5 mg/ml
Isotype	IgG
Calculated MW	18648

CIRBP (aa 81-91) Antibody (internal region) - Additional Information

Gene ID 1153

Other Names

Cold-inducible RNA-binding protein, A18 hnRNP, Glycine-rich RNA-binding protein CIRP, CIRBP, A18HNRNP, CIRP

Format

0.5 mg/ml in Tris saline, 0.02% sodium azide, pH7.3 with 0.5% bovine serum albumin

Storage

Maintain refrigerated at 2-8°C for up to 6 months. For long term storage store at -20°C in small aliquots to prevent freeze-thaw cycles.

Precautions

CIRBP (aa 81-91) Antibody (internal region) is for research use only and not for use in diagnostic or therapeutic procedures.

CIRBP (aa 81-91) Antibody (internal region) - Protein Information

Name CIRBP

Synonyms A18HNRNP, CIRP

Function

Cold-inducible mRNA binding protein that plays a protective role in the genotoxic stress response by stabilizing transcripts of genes involved in cell survival. Acts as a translational activator. Seems to play an essential role in cold-induced suppression of cell proliferation. Binds specifically to the

3'-untranslated regions (3'- UTRs) of stress-responsive transcripts RPA2 and TXN. Acts as a translational repressor (By similarity). Promotes assembly of stress granules (SGs), when overexpressed.

Cellular Location

Nucleus, nucleoplasm. Cytoplasm Note=Translocates from the nucleus to the cytoplasm after exposure to UV radiation. Translocates from the nucleus to the cytoplasm into stress granules upon various cytoplasmic stresses, such as osmotic and heat shocks. Its recruitment into stress granules occurs in the absence of TIAR proteins (By similarity).

Tissue Location

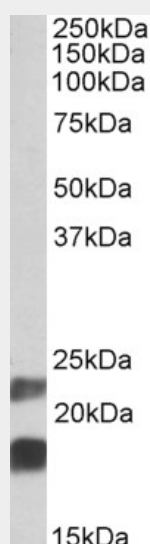
Ubiquitous.

CIRBP (aa 81-91) Antibody (internal region) - Protocols

Provided below are standard protocols that you may find useful for product applications.

- [Western Blot](#)
- [Blocking Peptides](#)
- [Dot Blot](#)
- [Immunohistochemistry](#)
- [Immunofluorescence](#)
- [Immunoprecipitation](#)
- [Flow Cytometry](#)
- [Cell Culture](#)

CIRBP (aa 81-91) Antibody (internal region) - Images



AF3286a (0.05 µg/ml) staining of Mouse Testis lysate (35 µg protein in RIPA buffer). Primary incubation was 1 hour. Detected by chemiluminescence.

CIRBP (aa 81-91) Antibody (internal region) - References

Down-regulating cold shock protein genes impairs cancer cell survival and enhances chemosensitivity. Zeng Y, Kulkarni P, Inoue T, Getzenberg RH, Journal of cellular biochemistry 2009 May 107 (1): 179-88. PMID: 19277990