

SNAP23 Antibody (internal region)
Peptide-affinity purified goat antibody
Catalog # AF3284a

Specification

SNAP23 Antibody (internal region) - Product Information

Application	WB
Primary Accession	O00161
Other Accession	NP_003816.2 , NP_570710.1 , 8773 , 20619 (mouse), 64630 (rat)
Reactivity	Human
Predicted	Mouse, Rat
Host	Goat
Clonality	Polyclonal
Concentration	0.5 mg/ml
Isotype	IgG
Calculated MW	23354

SNAP23 Antibody (internal region) - Additional Information

Gene ID 8773

Other Names

Synaptosomal-associated protein 23, SNAP-23, Vesicle-membrane fusion protein SNAP-23, SNAP23

Format

0.5 mg/ml in Tris saline, 0.02% sodium azide, pH7.3 with 0.5% bovine serum albumin

Storage

Maintain refrigerated at 2-8°C for up to 6 months. For long term storage store at -20°C in small aliquots to prevent freeze-thaw cycles.

Precautions

SNAP23 Antibody (internal region) is for research use only and not for use in diagnostic or therapeutic procedures.

SNAP23 Antibody (internal region) - Protein Information

Name SNAP23

Function

Essential component of the high affinity receptor for the general membrane fusion machinery and an important regulator of transport vesicle docking and fusion.

Cellular Location

Cell membrane; Peripheral membrane protein. Cell membrane; Lipid-anchor. Synapse, synaptosome. Note=Mainly localized to the plasma membrane

Tissue Location

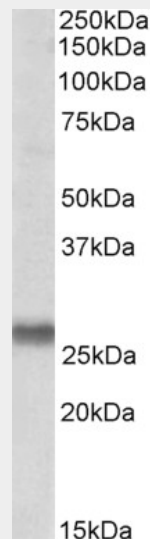
Ubiquitous. Highest levels where found in placenta.

SNAP23 Antibody (internal region) - Protocols

Provided below are standard protocols that you may find useful for product applications.

- [Western Blot](#)
- [Blocking Peptides](#)
- [Dot Blot](#)
- [Immunohistochemistry](#)
- [Immunofluorescence](#)
- [Immunoprecipitation](#)
- [Flow Cytometry](#)
- [Cell Culture](#)

SNAP23 Antibody (internal region) - Images



AF3284a (0.1 µg/ml) staining of Human Placenta lysate (35 µg protein in RIPA buffer). Primary incubation was 1 hour. Detected by chemiluminescence.

SNAP23 Antibody (internal region) - Background

This antibody is expected to recognize both reported isoforms (NP_003816.2; NP_570710.1).

SNAP23 Antibody (internal region) - References

Identification of new putative susceptibility genes for several psychiatric disorders by association analysis of regulatory and non-synonymous SNPs of 306 genes involved in neurotransmission and neurodevelopment. Gratacòs M, Costas J, de Cid R, Bayés M, González JR, Baca-García E, de Diego Y, Fernández-Aranda F, Fernández-Piqueras J, Guitart M, Martín-Santos R, Martorell L, Menchón JM, Roca M, Sáiz-Ruiz J, Sanjuán J, Torrens M, Urretavizcaya M, Valero J, Vilella E American journal of medical genetics. Part B, Neuropsychiatric genetics : the official publication of the International Society of Psychiatric Genetics 2009 Sep 150B (6): 808-16. PMID: 19086053