

NDUFS8 Antibody (internal region)
Peptide-affinity purified goat antibody
Catalog # AF3267a**Specification**

NDUFS8 Antibody (internal region) - Product Information

Application	WB
Primary Accession	O00217
Other Accession	NP_002487.1 , 4728 , 225887 (mouse) , 293652 (rat)
Reactivity	Mouse, Rat
Predicted	Human, Dog
Host	Goat
Clonality	Polyclonal
Concentration	0.5 mg/ml
Isotype	IgG
Calculated MW	23705

NDUFS8 Antibody (internal region) - Additional Information

Gene ID 4728

Other Names

NADH dehydrogenase [ubiquinone] iron-sulfur protein 8, mitochondrial, 1.6.5.3, 1.6.99.3, Complex I-23kD, CI-23kD, NADH-ubiquinone oxidoreductase 23 kDa subunit, TYKY subunit, NDUFS8

Format

0.5 mg/ml in Tris saline, 0.02% sodium azide, pH7.3 with 0.5% bovine serum albumin

Storage

Maintain refrigerated at 2-8°C for up to 6 months. For long term storage store at -20°C in small aliquots to prevent freeze-thaw cycles.

Precautions

NDUFS8 Antibody (internal region) is for research use only and not for use in diagnostic or therapeutic procedures.

NDUFS8 Antibody (internal region) - Protein Information

Name NDUFS8

Function

Core subunit of the mitochondrial membrane respiratory chain NADH dehydrogenase (Complex I) which catalyzes electron transfer from NADH through the respiratory chain, using ubiquinone as an electron acceptor (PubMed: [22499348](http://www.uniprot.org/citations/22499348)). Essential for the catalytic activity and assembly of complex I (PubMed: [22499348](http://www.uniprot.org/citations/22499348)).

Cellular Location

Mitochondrion inner membrane; Peripheral membrane protein {ECO:0000250|UniProtKB:P42028}; Matrix side {ECO:0000250|UniProtKB:P42028}

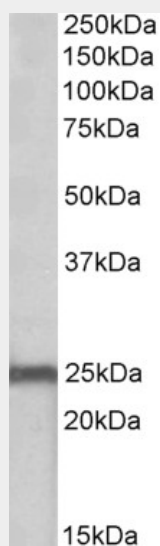
Tissue Location

Expressed in all tissues with the highest level in heart and skeletal muscle and the lowest level in lung

NDUFS8 Antibody (internal region) - Protocols

Provided below are standard protocols that you may find useful for product applications.

- [Western Blot](#)
- [Blocking Peptides](#)
- [Dot Blot](#)
- [Immunohistochemistry](#)
- [Immunofluorescence](#)
- [Immunoprecipitation](#)
- [Flow Cytometry](#)
- [Cell Culture](#)

NDUFS8 Antibody (internal region) - Images

AF3267a (0.1 µg/ml) staining of Mouse Heart lysate (35 µg protein in RIPA buffer). Primary incubation was 1 hour. Detected by chemiluminescence.

NDUFS8 Antibody (internal region) - References

Association study between single-nucleotide polymorphisms in 199 drug-related genes and commonly measured quantitative traits of 752 healthy Japanese subjects. Saito A, Kawamoto M, Kamatani N, Journal of human genetics 2009 Jun 54 (6): 317-23. PMID: 19343046