

ETF A Antibody (C-Term)
Peptide-affinity purified goat antibody
Catalog # AF3258a

Specification

ETF A Antibody (C-Term) - Product Information

Application	WB
Primary Accession	P13804
Other Accession	NP_000117.1 , NP_001121188.1 , 2108 , 110842 (mouse) , 300726 (rat)
Reactivity	Human, Mouse, Rat
Predicted	Dog
Host	Goat
Clonality	Polyclonal
Concentration	0.5 mg/ml
Isotype	IgG
Calculated MW	35080

ETF A Antibody (C-Term) - Additional Information

Gene ID 2108

Other Names

Electron transfer flavoprotein subunit alpha, mitochondrial, Alpha-ETF, ETF A

Format

0.5 mg/ml in Tris saline, 0.02% sodium azide, pH7.3 with 0.5% bovine serum albumin

Storage

Maintain refrigerated at 2-8°C for up to 6 months. For long term storage store at -20°C in small aliquots to prevent freeze-thaw cycles.

Precautions

ETF A Antibody (C-Term) is for research use only and not for use in diagnostic or therapeutic procedures.

ETF A Antibody (C-Term) - Protein Information

Name ETF A

Function

Heterodimeric electron transfer flavoprotein that accepts electrons from several mitochondrial dehydrogenases, including acyl-CoA dehydrogenases, glutaryl-CoA and sarcosine dehydrogenase (PubMed: [10356313](http://www.uniprot.org/citations/10356313), PubMed: [15159392](http://www.uniprot.org/citations/15159392), PubMed: [15975918](http://www.uniprot.org/citations/15975918), PubMed: [27499296](http://www.uniprot.org/citations/27499296)),

PubMed:9334218). It transfers the electrons to the main mitochondrial respiratory chain via ETF-ubiquinone oxidoreductase (ETF dehydrogenase) (PubMed:9334218). Required for normal mitochondrial fatty acid oxidation and normal amino acid metabolism (PubMed:12815589, PubMed:1430199, PubMed:1882842).

Cellular Location

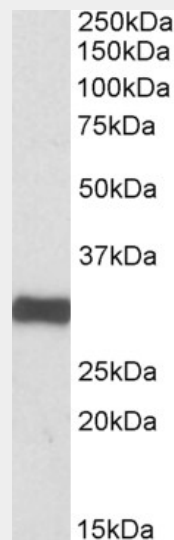
Mitochondrion matrix.

ETF A Antibody (C-Term) - Protocols

Provided below are standard protocols that you may find useful for product applications.

- [Western Blot](#)
- [Blocking Peptides](#)
- [Dot Blot](#)
- [Immunohistochemistry](#)
- [Immunofluorescence](#)
- [Immunoprecipitation](#)
- [Flow Cytometry](#)
- [Cell Culture](#)

ETF A Antibody (C-Term) - Images



AF3258a (0.1 µg/ml) staining of Human Heart lysate (35 µg protein in RIPA buffer). Primary incubation was 1 hour. Detected by chemiluminescence.

ETF A Antibody (C-Term) - Background

This antibody is expected to recognize both reported isoforms (NP_000117.1; NP_001121188.1).

ETF A Antibody (C-Term) - References

Clinical and genetic analysis of lipid storage myopathies. Ohkuma A, Noguchi S, Sugie H, Malicdan

MC, Fukuda T, Shimazu K, Lpez LC, Hirano M, Hayashi YK, Nonaka I, Nishino I, Muscle & nerve
2009 Mar 39 (3): 333-42. PMID: 19208393