

ALDH9A1 Antibody (internal region)
Peptide-affinity purified goat antibody
Catalog # AF3242a

Specification

ALDH9A1 Antibody (internal region) - Product Information

Application	WB, IHC
Primary Accession	P49189
Other Accession	NP_000687.3 , 223
Reactivity	Human
Host	Goat
Clonality	Polyclonal
Concentration	0.5 mg/ml
Isotype	IgG
Calculated MW	53802

ALDH9A1 Antibody (internal region) - Additional Information

Gene ID 223

Other Names

4-trimethylaminobutyraldehyde dehydrogenase, TMABADH, 1.2.1.47, Aldehyde dehydrogenase E3 isozyme, Aldehyde dehydrogenase family 9 member A1, 1.2.1.3, Gamma-aminobutyraldehyde dehydrogenase, 1.2.1.19, R-aminobutyraldehyde dehydrogenase, ALDH9A1, ALDH4, ALDH7, ALDH9

Format

0.5 mg/ml in Tris saline, 0.02% sodium azide, pH7.3 with 0.5% bovine serum albumin

Storage

Maintain refrigerated at 2-8°C for up to 6 months. For long term storage store at -20°C in small aliquots to prevent freeze-thaw cycles.

Precautions

ALDH9A1 Antibody (internal region) is for research use only and not for use in diagnostic or therapeutic procedures.

ALDH9A1 Antibody (internal region) - Protein Information

Name ALDH9A1

Synonyms ALDH4, ALDH7, ALDH9 {ECO:0000303|PubMed:

Function

Converts gamma-trimethylaminobutyraldehyde into gamma- butyrobetaine with high efficiency (in vitro). Can catalyze the irreversible oxidation of a broad range of aldehydes to the corresponding acids in an NAD-dependent reaction, but with low efficiency. Catalyzes the oxidation of aldehydes

arising from biogenic amines and polyamines.

Cellular Location

Cytoplasm, cytosol {ECO:0000250|UniProtKB:Q9JLJ3}. Cytoplasm

Tissue Location

Detected in brain (at protein level) (PubMed:8645224). High expression in adult liver, skeletal muscle, and kidney. Low levels in heart, pancreas, lung and brain (PubMed:8786138) Expressed in all regions of the brain. Expression levels are variable in the different brain areas, with the highest levels in the spinal cord and the lowest in the occipital pole.

ALDH9A1 Antibody (internal region) - Protocols

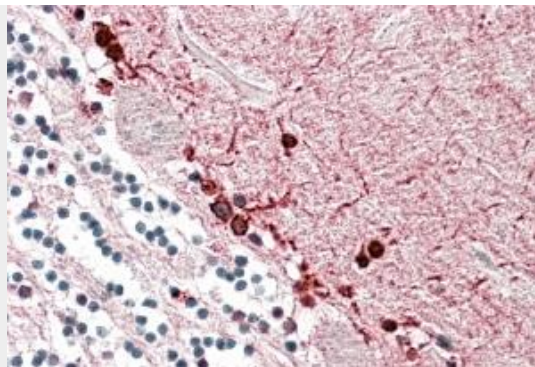
Provided below are standard protocols that you may find useful for product applications.

- [Western Blot](#)
- [Blocking Peptides](#)
- [Dot Blot](#)
- [Immunohistochemistry](#)
- [Immunofluorescence](#)
- [Immunoprecipitation](#)
- [Flow Cytometry](#)
- [Cell Culture](#)

ALDH9A1 Antibody (internal region) - Images



AF3242a (0.3 $\mu\text{g/ml}$) staining of Human Kidney lysate (35 μg protein in RIPA buffer). Primary incubation was 1 hour. Detected by chemiluminescence.



AF3242a (3.8 µg/ml) staining of paraffin embedded Human Cerebellum. Steamed antigen retrieval with citrate buffer pH 6, AP-staining.

ALDH9A1 Antibody (internal region) - References

Aldehyde dehydrogenase from adult human brain that dehydrogenates gamma-aminobutyraldehyde: purification, characterization, cloning and distribution. Kikonyogo A, Pietruszko R, The Biochemical journal 1996 May 316 (Pt 1) : 317-24. PMID: 8645224