

**ALDH3A1 Antibody (C-Term)**  
Peptide-affinity purified goat antibody  
Catalog # AF3239a**Specification**

---

**ALDH3A1 Antibody (C-Term) - Product Information**

Application	WB, IHC
Primary Accession	<a href="#">P30838</a>
Other Accession	<a href="#">NP_000682.3</a> , <a href="#">218</a>
Reactivity	Human, Mouse
Host	Goat
Clonality	Polyclonal
Concentration	0.5 mg/ml
Isotype	IgG
Calculated MW	50395

**ALDH3A1 Antibody (C-Term) - Additional Information****Gene ID** 218**Other Names**

Aldehyde dehydrogenase, dimeric NADP-preferring, 1.2.1.5, ALDHIII, Aldehyde dehydrogenase 3, Aldehyde dehydrogenase family 3 member A1, ALDH3A1, ALDH3

**Format**

0.5 mg/ml in Tris saline, 0.02% sodium azide, pH7.3 with 0.5% bovine serum albumin

**Storage**

Maintain refrigerated at 2-8°C for up to 6 months. For long term storage store at -20°C in small aliquots to prevent freeze-thaw cycles.

**Precautions**

ALDH3A1 Antibody (C-Term) is for research use only and not for use in diagnostic or therapeutic procedures.

**ALDH3A1 Antibody (C-Term) - Protein Information****Name** ALDH3A1**Synonyms** ALDH3**Function**

ALDHs play a major role in the detoxification of alcohol- derived acetaldehyde (Probable). They are involved in the metabolism of corticosteroids, biogenic amines, neurotransmitters, and lipid peroxidation (Probable). Oxidizes medium and long chain aldehydes into non-toxic fatty acids (PubMed:&lt;a href="http://www.uniprot.org/citations/1737758" target="\_blank"&gt;1737758&lt;/a&gt;). Preferentially oxidizes aromatic aldehyde substrates (PubMed:&lt;a

[1737758](http://www.uniprot.org/citations/1737758)). Comprises about 50 percent of corneal epithelial soluble proteins (By similarity). May play a role in preventing corneal damage caused by ultraviolet light (By similarity).

#### Cellular Location

Cytoplasm {ECO:0000250|UniProtKB:P47739}.

#### Tissue Location

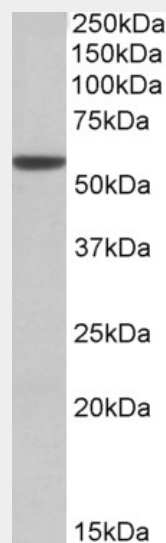
High levels in stomach, esophagus and lung; low level in the liver and kidney

### ALDH3A1 Antibody (C-Term) - Protocols

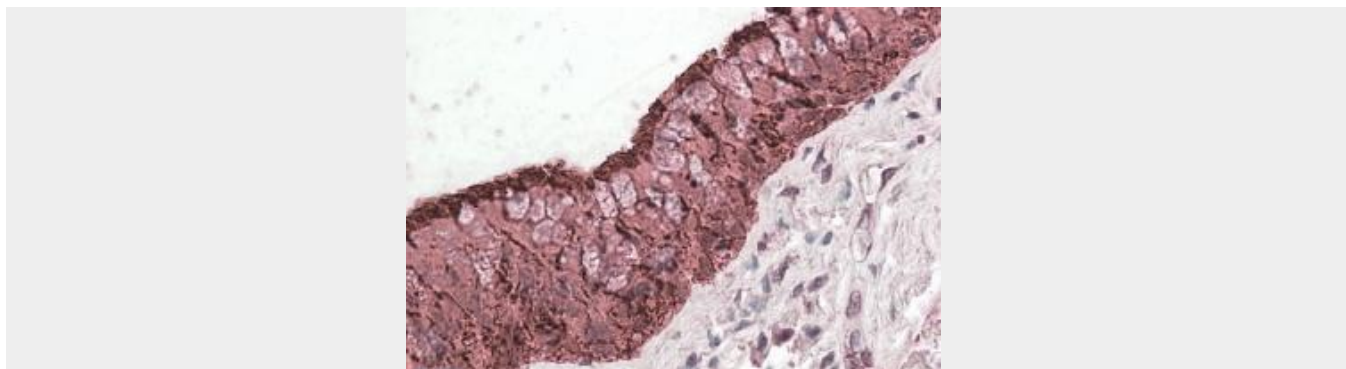
Provided below are standard protocols that you may find useful for product applications.

- [Western Blot](#)
- [Blocking Peptides](#)
- [Dot Blot](#)
- [Immunohistochemistry](#)
- [Immunofluorescence](#)
- [Immunoprecipitation](#)
- [Flow Cytometry](#)
- [Cell Culture](#)

### ALDH3A1 Antibody (C-Term) - Images



AF3239a (0.01 µg/ml) staining of Mouse Eye lysate (35 µg protein in RIPA buffer). Primary incubation was 1 hour. Detected by chemiluminescence.



AF3239a (3.8  $\mu\text{g/ml}$ ) staining of paraffin embedded Human Lung. Steamed antigen retrieval with citrate buffer pH 6, AP-staining.

#### **ALDH3A1 Antibody (C-Term) - Background**

Reported variants represent identical protein: NP\_001128639.1, NP\_000682.3, NP\_001128640.1

#### **ALDH3A1 Antibody (C-Term) - References**

The oxidation status of ALDH3A1 in human saliva and its correlation with antioxidant capacity measured by ORAC method. Bogucka M, Giebu?towicz J, Zawada K, Wroczy?ski P, Wierzchowski J, Pietrzak M, Piekarczyk P, Romanowska K. Acta poloniae pharmaceutica 66 (5): 477-82. PMID: 19894643