

CDH11 (aa 26-37) Antibody (internal region)
Peptide-affinity purified goat antibody
Catalog # AF3220a

Specification

CDH11 (aa 26-37) Antibody (internal region) - Product Information

Application	WB
Primary Accession	P55287
Other Accession	NP_001788.2 , 1009 , 12552 (mouse) , 84407 (rat)
Reactivity	Human
Predicted	Mouse, Rat, Dog
Host	Goat
Clonality	Polyclonal
Concentration	0.5 mg/ml
Isotype	IgG
Calculated MW	87965

CDH11 (aa 26-37) Antibody (internal region) - Additional Information

Gene ID 1009

Other Names

Cadherin-11, OSF-4, Osteoblast cadherin, OB-cadherin, CDH11

Format

0.5 mg/ml in Tris saline, 0.02% sodium azide, pH7.3 with 0.5% bovine serum albumin

Storage

Maintain refrigerated at 2-8°C for up to 6 months. For long term storage store at -20°C in small aliquots to prevent freeze-thaw cycles.

Precautions

CDH11 (aa 26-37) Antibody (internal region) is for research use only and not for use in diagnostic or therapeutic procedures.

CDH11 (aa 26-37) Antibody (internal region) - Protein Information

Name CDH11

Function

Cadherins are calcium-dependent cell adhesion proteins. They preferentially interact with themselves in a homophilic manner in connecting cells; cadherins may thus contribute to the sorting of heterogeneous cell types. Required for proper focal adhesion assembly (PubMed: [33811546](http://www.uniprot.org/citations/33811546)). Involved in the regulation of cell migration (PubMed: [33811546](http://www.uniprot.org/citations/33811546)).

Cellular Location

Cell membrane; Single-pass type I membrane protein

Tissue Location

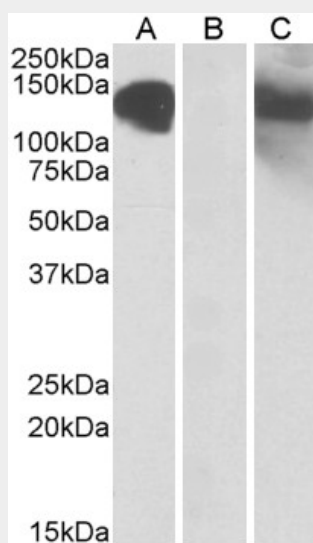
Expressed mainly in brain but also found in other tissues. Expressed in neuroblasts. In the embryo from 67 to 72 days of gestation, detected at high levels in facial mesenchyme including the central palatal mesenchyme, dental mesenchyme, the eye and optic muscle, and the tongue (at protein level) (PubMed:33811546)

CDH11 (aa 26-37) Antibody (internal region) - Protocols

Provided below are standard protocols that you may find useful for product applications.

- [Western Blot](#)
- [Blocking Peptides](#)
- [Dot Blot](#)
- [Immunohistochemistry](#)
- [Immunofluorescence](#)
- [Immunoprecipitation](#)
- [Flow Cytometry](#)
- [Cell Culture](#)

CDH11 (aa 26-37) Antibody (internal region) - Images



HEK293 lysate (10ug protein in RIPA buffer) overexpressing Human CDH11 with C-terminal MYC tag probed with AF3220a (1ug/ml) in Lane A and probed with anti-MYC Tag (1/1000) in lane C. Mock-transfected HEK293 probed with AF3220a (1mg/ml) in Lane B. Primary incubations were for 1 hour. Detected by chemiluminescence.

CDH11 (aa 26-37) Antibody (internal region) - References

Genetic associations of 115 polymorphisms with cancers of the upper aerodigestive tract across 10 European countries: the ARCAGE project. Canova C, Hashibe M, Simonato L, Nelis M, Metspalu A, Lagiou P, Trichopoulos D, Ahrens W, Pigeot I, Merletti F, Richiardi L, Talamini R, Barzan L, Macfarlane GJ, Macfarlane TV, Holcátová I, Bencko V, Benhamou S, Bouchardy C, Kjaerheim K, Lowry R, Agudo A, Cancer research 2009 Apr 69 (7): 2956-65. PMID: 19339270