

**POU2AF1 Antibody (internal region)**  
Peptide-affinity purified goat antibody  
Catalog # AF3193a

### Specification

---

#### POU2AF1 Antibody (internal region) - Product Information

Application	WB
Primary Accession	<a href="#">O16633</a>
Other Accession	<a href="#">NP_006226.2</a> , <a href="#">5450</a>
Reactivity	Human
Predicted	Mouse, Rat, Dog
Host	Goat
Clonality	Polyclonal
Concentration	0.5 mg/ml
Isotype	IgG
Calculated MW	27436

#### POU2AF1 Antibody (internal region) - Additional Information

Gene ID 5450

#### Other Names

POU domain class 2-associating factor 1, B-cell-specific coactivator OBF-1, BOB-1, OCA-B, OCT-binding factor 1, POU2AF1, OBF1

#### Format

0.5 mg/ml in Tris saline, 0.02% sodium azide, pH7.3 with 0.5% bovine serum albumin

#### Storage

Maintain refrigerated at 2-8°C for up to 6 months. For long term storage store at -20°C in small aliquots to prevent freeze-thaw cycles.

#### Precautions

POU2AF1 Antibody (internal region) is for research use only and not for use in diagnostic or therapeutic procedures.

#### POU2AF1 Antibody (internal region) - Protein Information

Name POU2AF1 ([HGNC:9211](#))

#### Function

Transcriptional coactivator that specifically associates with either POU2F1/OCT1 or POU2F2/OCT2 (PubMed:<a href="http://www.uniprot.org/citations/7859290" target="\_blank">7859290</a>). It boosts the POU2F1/OCT1 mediated promoter activity and to a lesser extent, that of POU2F2/OCT2 (PubMed:<a href="http://www.uniprot.org/citations/7779176" target="\_blank">7779176</a>). It recognizes the POU domains of POU2F1/OCT1 and POU2F2/OCT2 (PubMed:<a href="http://www.uniprot.org/citations/7779176" target="\_blank">7779176</a>). It is essential

for the response of B-cells to antigens and required for the formation of germinal centers (PubMed:<a href="http://www.uniprot.org/citations/7623806" target="\_blank">7623806</a>, PubMed:<a href="http://www.uniprot.org/citations/7859290" target="\_blank">7859290</a>). Regulates IL6 expression in B cells as POU2F2/OCT2 coactivator (By similarity).

#### Cellular Location

Nucleus.

#### Tissue Location

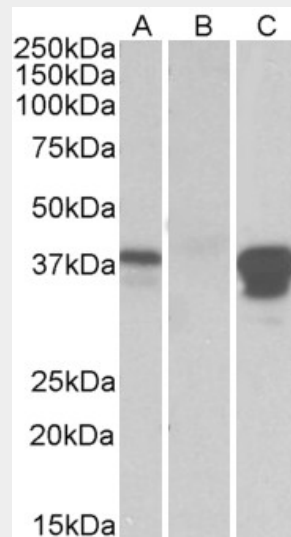
B-cell specific (PubMed:7779176, PubMed:7859290). Detected in mainly in spleen, but also in thymus, peripheral blood leukocyte and small intestine (PubMed:7779176, PubMed:7859290)

### POU2AF1 Antibody (internal region) - Protocols

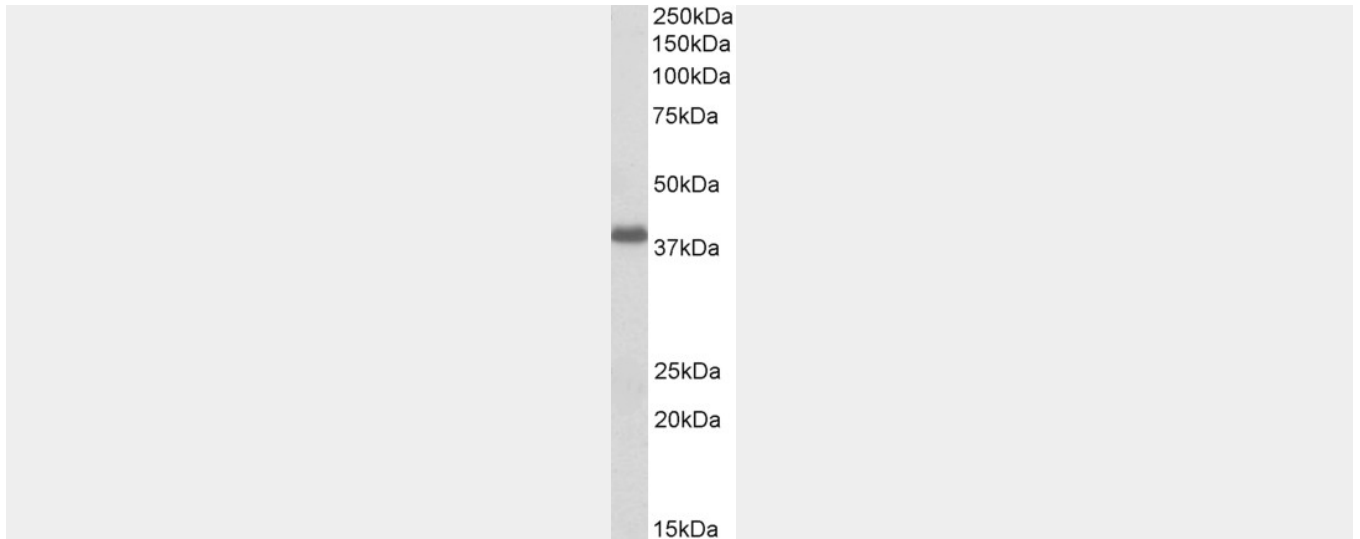
Provided below are standard protocols that you may find useful for product applications.

- [Western Blot](#)
- [Blocking Peptides](#)
- [Dot Blot](#)
- [Immunohistochemistry](#)
- [Immunofluorescence](#)
- [Immunoprecipitation](#)
- [Flow Cytometry](#)
- [Cell Culture](#)

### POU2AF1 Antibody (internal region) - Images



HEK293 lysate (10ug protein in RIPA buffer) overexpressing Human POU2AF1 with DYKDDDDK tag probed with AF3193a (0.5ug/ml) in Lane A and probed with anti- DYKDDDDK Tag (1/3000) in lane C. Mock-transfected HEK293 probed with AF3193a (1mg/ml) in Lane B. Primary incubations were for 1 hour. Detected by chemiluminescence.



AF3193a (0.3 µg/ml) staining of Daudi lysate (35 µg protein in RIPA buffer). Primary incubation was 1 hour. Detected by chemiluminescence.

#### **POU2AF1 Antibody (internal region) - References**

Functional long-range interactions of the IgH 3' enhancers with the bcl-2 promoter region in t(14;18) lymphoma cells. Duan H, Xiang H, Ma L, Boxer LM, Oncogene 2008 Dec 27 (53): 6720-8. PMID: 18695675