

CETP Antibody (N-Term)
Peptide-affinity purified goat antibody
Catalog # AF3167a

Specification

CETP Antibody (N-Term) - Product Information

Application	WB, IF
Primary Accession	P11597
Other Accession	NP_000069.2 , 1071
Predicted	Human
Host	Goat
Clonality	Polyclonal
Concentration	0.5 mg/ml
Isotype	IgG
Calculated MW	54756

CETP Antibody (N-Term) - Additional Information

Gene ID 1071

Other Names

Cholesteryl ester transfer protein, Lipid transfer protein I {ECO:0000312|MIM:118470}, CETP ([HGNC:1869](http://www.genenames.org/cgi-bin/gene_symbol_report?hgnc_id=1869))

Format

0.5 mg/ml in Tris saline, 0.02% sodium azide, pH7.3 with 0.5% bovine serum albumin

Storage

Maintain refrigerated at 2-8°C for up to 6 months. For long term storage store at -20°C in small aliquots to prevent freeze-thaw cycles.

Precautions

CETP Antibody (N-Term) is for research use only and not for use in diagnostic or therapeutic procedures.

CETP Antibody (N-Term) - Protein Information

Name CETP ([HGNC:1869](#))

Function

Involved in the transfer of neutral lipids, including cholesteryl ester and triglyceride, among lipoprotein particles. Allows the net movement of cholesteryl ester from high density lipoproteins/HDL to triglyceride-rich very low density lipoproteins/VLDL, and the equimolar transport of triglyceride from VLDL to HDL (PubMed:[24293641](http://www.uniprot.org/citations/24293641), PubMed:[3281933](http://www.uniprot.org/citations/3281933), PubMed:[3281933](http://www.uniprot.org/citations/3281933))

<http://www.uniprot.org/citations/3600759> target="_blank">3600759). Regulates the reverse cholesterol transport, by which excess cholesterol is removed from peripheral tissues and returned to the liver for elimination (PubMed: <http://www.uniprot.org/citations/17237796> target="_blank">17237796).

Cellular Location

Secreted. Note=Secreted in plasma

Tissue Location

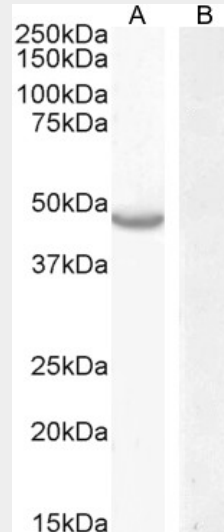
Expressed by the liver and secreted in plasma.

CETP Antibody (N-Term) - Protocols

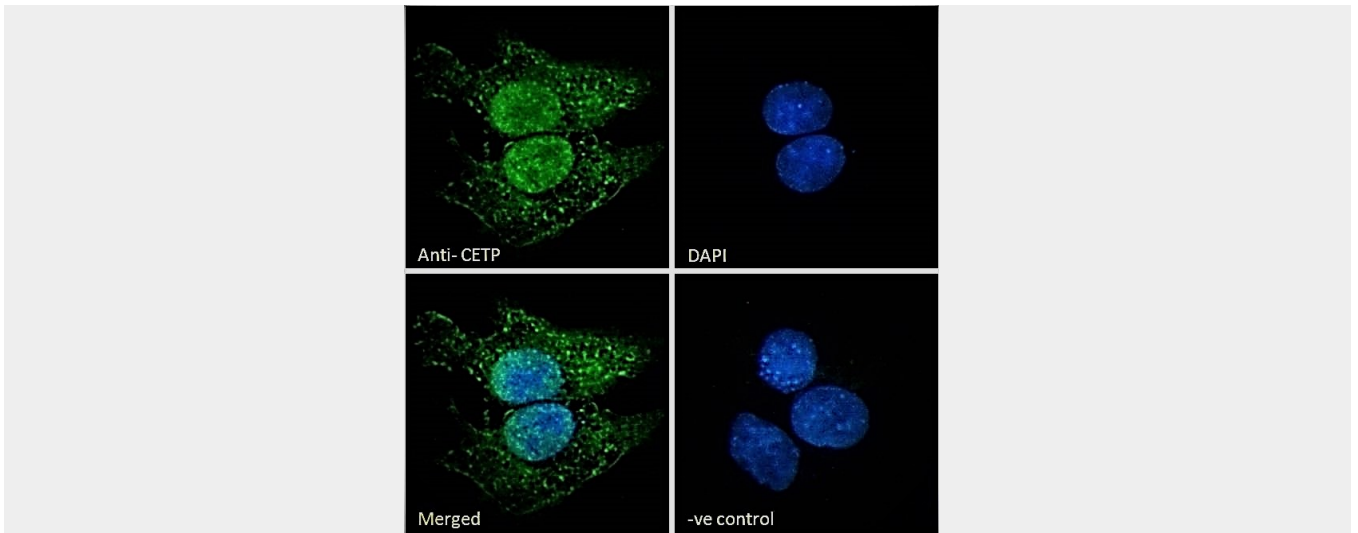
Provided below are standard protocols that you may find useful for product applications.

- [Western Blot](#)
- [Blocking Peptides](#)
- [Dot Blot](#)
- [Immunohistochemistry](#)
- [Immunofluorescence](#)
- [Immunoprecipitation](#)
- [Flow Cytometry](#)
- [Cell Culture](#)

CETP Antibody (N-Term) - Images



EB09942 (0.3µg/ml) staining of HepG2 cell lysate (A) and Negative control Caco-2 cell lysate (B) (35µg protein in RIPA buffer). Detected by chemiluminescence.



EB09943 Immunofluorescence analysis of paraformaldehyde fixed HepG2 cells, permeabilized with 0.15% Triton. Primary incubation 1hr (10ug/ml) followed by Alexa Fluor 488 secondary antibody (2ug/ml), showing nuclear and mitochondria/ cytoplasmic staining. T

CETP Antibody (N-Term) - References

Association of circulating cholesteryl ester transfer protein activity with incidence of cardiovascular disease in the community. Vasan RS, Pencina MJ, Robins SJ, Zachariah JP, Kaur G, D'Agostino RB, Ordovas JM, Circulation 2009 Dec 120 (24): 2414-20. PMID: 19948972