

Glutamate Dehydrogenase Antibody (internal region)
Peptide-affinity purified goat antibody
Catalog # AF3123a

Specification

Glutamate Dehydrogenase Antibody (internal region) - Product Information

Application	IHC, WB
Primary Accession	P00367
Other Accession	NP_005262.1 , NP_036216.2 , 2746 , 2747 , 14661 (mouse) , 24399 (rat)
Reactivity	Human, Mouse
Predicted	Rat, Dog
Host	Goat
Clonality	Polyclonal
Concentration	0.5 mg/ml
Isotype	IgG
Calculated MW	61398

Glutamate Dehydrogenase Antibody (internal region) - Additional Information

Gene ID 2746

Other Names

Glutamate dehydrogenase 1, mitochondrial, GDH 1, 1.4.1.3, GLUD1, GLUD

Format

0.5 mg/ml in Tris saline, 0.02% sodium azide, pH7.3 with 0.5% bovine serum albumin

Storage

Maintain refrigerated at 2-8°C for up to 6 months. For long term storage store at -20°C in small aliquots to prevent freeze-thaw cycles.

Precautions

Glutamate Dehydrogenase Antibody (internal region) is for research use only and not for use in diagnostic or therapeutic procedures.

Glutamate Dehydrogenase Antibody (internal region) - Protein Information

Name GLUD1

Synonyms GLUD

Function

Mitochondrial glutamate dehydrogenase that catalyzes the conversion of L-glutamate into alpha-ketoglutarate. Plays a key role in glutamine anaplerosis by producing alpha-ketoglutarate, an important intermediate in the tricarboxylic acid cycle (PubMed:11032875, PubMed:11032875).

[11254391](http://www.uniprot.org/citations/11254391), PubMed: [16023112](http://www.uniprot.org/citations/16023112), PubMed: [16959573](http://www.uniprot.org/citations/16959573)). Plays a role in insulin homeostasis (PubMed: [11297618](http://www.uniprot.org/citations/11297618), PubMed: [9571255](http://www.uniprot.org/citations/9571255)). May be involved in learning and memory reactions by increasing the turnover of the excitatory neurotransmitter glutamate (By similarity).

Cellular Location

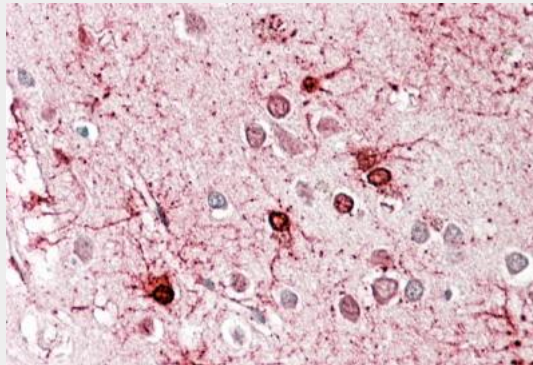
Mitochondrion. Endoplasmic reticulum. Note=Mostly translocates into the mitochondria, only a small amount of the protein localizes to the endoplasmic reticulum.

Glutamate Dehydrogenase Antibody (internal region) - Protocols

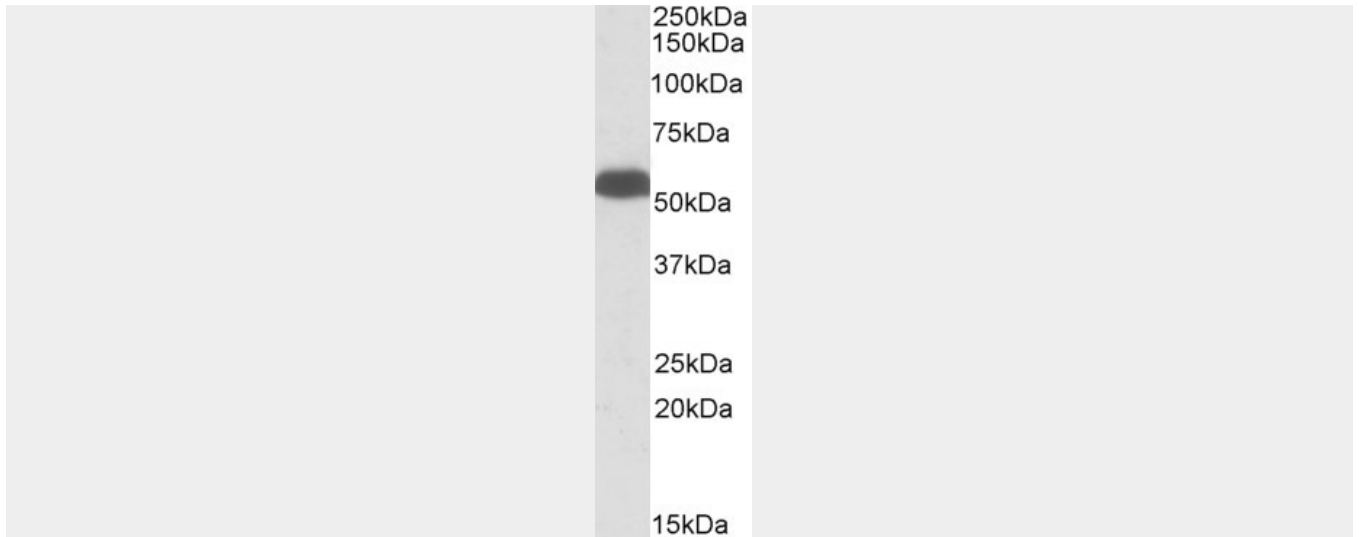
Provided below are standard protocols that you may find useful for product applications.

- [Western Blot](#)
- [Blocking Peptides](#)
- [Dot Blot](#)
- [Immunohistochemistry](#)
- [Immunofluorescence](#)
- [Immunoprecipitation](#)
- [Flow Cytometry](#)
- [Cell Culture](#)

Glutamate Dehydrogenase Antibody (internal region) - Images



AF3123a (3.8 µg/ml) staining of paraffin embedded Human Cerebral Cortex. Steamed antigen retrieval with citrate buffer pH 6, AP-staining.



AF3123a (0.3 $\mu\text{g/ml}$) staining of Mouse Liver lysate (35 μg protein in RIPA buffer). Primary incubation was 1 hour. Detected by chemiluminescence.

Glutamate Dehydrogenase Antibody (internal region) - Background

This antibody is expected to recognize both reported isoforms (NP_005262.1; NP_036216.2).

Glutamate Dehydrogenase Antibody (internal region) - References

Expression of enzymes regulating placental ammonia homeostasis in human fetal growth restricted pregnancies. Jozwik M, Pietrzycki B, Jozwik M, Anthony RV. Placenta. 2009 Jul;30(7):607-12. PMID: 19500843