

MAPRE3 (aa151-164) Antibody (internal region)
Peptide-affinity purified goat antibody
Catalog # AF3106a

Specification

MAPRE3 (aa151-164) Antibody (internal region) - Product Information

Application	WB
Primary Accession	Q9UPY8
Other Accession	NP_036458.2 , 22924 , 100732 (mouse)
Reactivity	Human, Mouse
Predicted	Dog
Host	Goat
Clonality	Polyclonal
Concentration	0.5 mg/ml
Isotype	IgG
Calculated MW	31982

MAPRE3 (aa151-164) Antibody (internal region) - Additional Information

Gene ID 22924

Other Names

Microtubule-associated protein RP/EB family member 3, EB1 protein family member 3, EBF3, End-binding protein 3, EB3, RP3, MAPRE3

Format

0.5 mg/ml in Tris saline, 0.02% sodium azide, pH7.3 with 0.5% bovine serum albumin

Storage

Maintain refrigerated at 2-8°C for up to 6 months. For long term storage store at -20°C in small aliquots to prevent freeze-thaw cycles.

Precautions

MAPRE3 (aa151-164) Antibody (internal region) is for research use only and not for use in diagnostic or therapeutic procedures.

MAPRE3 (aa151-164) Antibody (internal region) - Protein Information

Name MAPRE3

Function

Plus-end tracking protein (+TIP) that binds to the plus-end of microtubules and regulates the dynamics of the microtubule cytoskeleton (PubMed:[19255245](http://www.uniprot.org/citations/19255245), PubMed:[28814570](http://www.uniprot.org/citations/28814570)). Promotes microtubule growth (PubMed:[19255245](http://www.uniprot.org/citations/19255245), PubMed:[28814570](http://www.uniprot.org/citations/28814570))

target="_blank">28814570). May be involved in spindle function by stabilizing microtubules and anchoring them at centrosomes (PubMed:19255245, PubMed:28814570). Also acts as a regulator of minus- end microtubule organization: interacts with the complex formed by AKAP9 and PDE4DIP, leading to recruit CAMSAP2 to the Golgi apparatus, thereby tethering non-centrosomal minus-end microtubules to the Golgi, an important step for polarized cell movement (PubMed:28814570). Promotes elongation of CAMSAP2-decorated microtubule stretches on the minus-end of microtubules (PubMed:28814570).

Cellular Location

Cytoplasm, cytoskeleton. Note=Associated with the microtubule network. Detected at the plus end of microtubules

Tissue Location

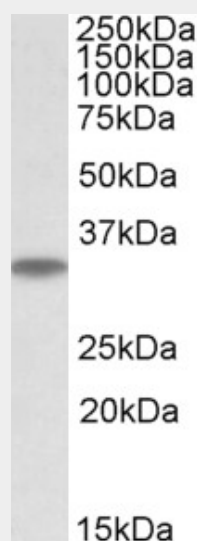
Predominantly expressed in brain and muscle.

MAPRE3 (aa151-164) Antibody (internal region) - Protocols

Provided below are standard protocols that you may find useful for product applications.

- [Western Blot](#)
- [Blocking Peptides](#)
- [Dot Blot](#)
- [Immunohistochemistry](#)
- [Immunofluorescence](#)
- [Immunoprecipitation](#)
- [Flow Cytometry](#)
- [Cell Culture](#)

MAPRE3 (aa151-164) Antibody (internal region) - Images



AF3106a (0.05 µg/ml) staining of Mouse Brain lysate (35 µg protein in RIPA buffer). Primary incubation was 1 hour. Detected by chemiluminescence.

MAPRE3 (aa151-164) Antibody (internal region) - References

Mammalian end binding proteins control persistent microtubule growth. Komarova Y, De Groot CO, Grigoriev I, Gouveia SM, Munteanu EL, Schober JM, Honnappa S, Buey RM, Hoogenraad CC, Dogterom M, Borisy GG, Steinmetz MO, Akhmanova A, The Journal of cell biology 2009 Mar 184 (5): 691-706. PMID: 19255245