

TRIM29 / ATDC Antibody (internal region)
Peptide-affinity purified goat antibody
Catalog # AF3094a**Specification**

TRIM29 / ATDC Antibody (internal region) - Product Information

Application	WB, IHC
Primary Accession	Q14134
Other Accession	NP_036233.2 , 23650 , 72169 (mouse) , 300656 (rat)
Reactivity	Human
Predicted	Mouse, Rat
Host	Goat
Clonality	Polyclonal
Concentration	0.5 mg/ml
Isotype	IgG
Calculated MW	65835

TRIM29 / ATDC Antibody (internal region) - Additional Information**Gene ID** 23650**Other Names**

Tripartite motif-containing protein 29, Ataxia telangiectasia group D-associated protein, TRIM29, ATDC

Format

0.5 mg/ml in Tris saline, 0.02% sodium azide, pH7.3 with 0.5% bovine serum albumin

Storage

Maintain refrigerated at 2-8°C for up to 6 months. For long term storage store at -20°C in small aliquots to prevent freeze-thaw cycles.

Precautions

TRIM29 / ATDC Antibody (internal region) is for research use only and not for use in diagnostic or therapeutic procedures.

TRIM29 / ATDC Antibody (internal region) - Protein Information**Name** TRIM29**Synonyms** ATDC**Function**

Plays a crucial role in the regulation of macrophage activation in response to viral or bacterial infections within the respiratory tract. Mechanistically, TRIM29 interacts with IKBKG/NEMO in the lysosome where it induces its 'Lys-48' ubiquitination and subsequent degradation. In turn, the

expression of type I interferons and the production of pro-inflammatory cytokines are inhibited. Additionally, induces the 'Lys-48' ubiquitination of STING1 in a similar way, leading to its degradation.

Cellular Location

Cytoplasm. Lysosome. Note=Colocalizes with intermediate filaments

Tissue Location

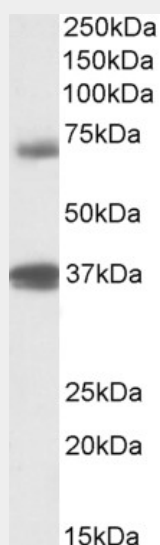
Expressed in placenta, prostate and thymus.

TRIM29 / ATDC Antibody (internal region) - Protocols

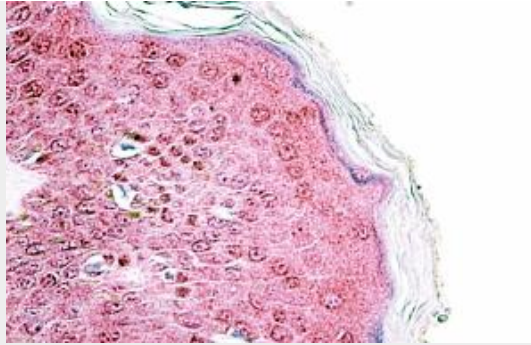
Provided below are standard protocols that you may find useful for product applications.

- [Western Blot](#)
- [Blocking Peptides](#)
- [Dot Blot](#)
- [Immunohistochemistry](#)
- [Immunofluorescence](#)
- [Immunoprecipitation](#)
- [Flow Cytometry](#)
- [Cell Culture](#)

TRIM29 / ATDC Antibody (internal region) - Images



AF3094a (1 µg/ml) staining of Peripheral Blood Lymphocytes lysate (35 µg protein in RIPA buffer). Primary incubation was 1 hour. Detected by chemiluminescence.



AF3094a (3.8 µg/ml) staining of paraffin embedded Human Skin. Steamed antigen retrieval with citrate buffer pH 6, AP-staining.

TRIM29 / ATDC Antibody (internal region) - References

Oncogenic function of ATDC in pancreatic cancer through Wnt pathway activation and beta-catenin stabilization. Wang L, Heidt DG, Lee CJ, Yang H, Logsdon CD, Zhang L, Fearon ER, Ljungman M, Simeone DM, Cancer cell 2009 Mar 15 (3): 207-19. PMID: 19249679