

Mesothelin Antibody (internal region)
Peptide-affinity purified goat antibody
Catalog # AF3091a

Specification

Mesothelin Antibody (internal region) - Product Information

Application	WB
Primary Accession	Q13421
Other Accession	NP_005814.2 , NP_037536.2 , 10232
Reactivity	Human
Host	Goat
Clonality	Polyclonal
Concentration	0.5 mg/ml
Isotype	IgG
Calculated MW	68986

Mesothelin Antibody (internal region) - Additional Information

Gene ID 10232

Other Names

Mesothelin, CAK1 antigen, Pre-pro-megakaryocyte-potentiating factor, Megakaryocyte-potentiating factor, MPF, Mesothelin, cleaved form, MSLN, MPF

Format

0.5 mg/ml in Tris saline, 0.02% sodium azide, pH7.3 with 0.5% bovine serum albumin

Storage

Maintain refrigerated at 2-8°C for up to 6 months. For long term storage store at -20°C in small aliquots to prevent freeze-thaw cycles.

Precautions

Mesothelin Antibody (internal region) is for research use only and not for use in diagnostic or therapeutic procedures.

Mesothelin Antibody (internal region) - Protein Information

Name MSLN

Synonyms MPF

Function

Membrane-anchored forms may play a role in cellular adhesion.

Cellular Location

Cell membrane; Lipid-anchor, GPI-anchor. Golgi apparatus [Isoform 3]: Secreted.

Tissue Location

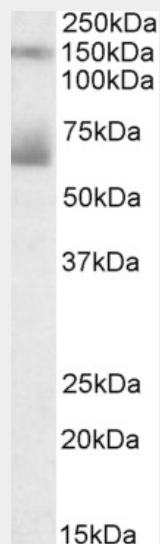
Expressed in lung. Expressed at low levels in heart, placenta and kidney. Expressed in mesothelial cells. Highly expressed in mesotheliomas, ovarian cancers, and some squamous cell carcinomas (at protein level).

Mesothelin Antibody (internal region) - Protocols

Provided below are standard protocols that you may find useful for product applications.

- [Western Blot](#)
- [Blocking Peptides](#)
- [Dot Blot](#)
- [Immunohistochemistry](#)
- [Immunofluorescence](#)
- [Immunoprecipitation](#)
- [Flow Cytometry](#)
- [Cell Culture](#)

Mesothelin Antibody (internal region) - Images



AF3091a (0.3 µg/ml) staining of Human Placenta lysate (35 µg protein in RIPA buffer). Primary incubation was 1 hour. Detected by chemiluminescence.

Mesothelin Antibody (internal region) - Background

This antibody is expected to recognize isoform 1 and 2 (NP_005814.2; NP_037536.2).

Mesothelin Antibody (internal region) - References

High mesothelin correlates with chemoresistance and poor survival in epithelial ovarian carcinoma. Cheng WF, Huang CY, Chang MC, Hu YH, Chiang YC, Chen YL, Hsieh CY, Chen CA, British journal of cancer 2009 Apr 100 (7): 1144-53. PMID: 19293794