

TOMM40 Antibody (internal region)
Peptide-affinity purified goat antibody
Catalog # AF3090a**Specification**

TOMM40 Antibody (internal region) - Product Information

Application	WB
Primary Accession	O96008
Other Accession	NP_006105.1 , 10452 , 53333 (mouse) , 308416 (rat)
Reactivity	Human
Predicted	Mouse, Rat, Dog
Host	Goat
Clonality	Polyclonal
Concentration	0.5 mg/ml
Isotype	IgG
Calculated MW	37893

TOMM40 Antibody (internal region) - Additional Information

Gene ID 10452

Other Names

Mitochondrial import receptor subunit TOM40 homolog, Protein Haymaker, Translocase of outer membrane 40 kDa subunit homolog, p38.5, TOMM40, C19orf1, PEREC1, TOM40

Format

0.5 mg/ml in Tris saline, 0.02% sodium azide, pH7.3 with 0.5% bovine serum albumin

Storage

Maintain refrigerated at 2-8°C for up to 6 months. For long term storage store at -20°C in small aliquots to prevent freeze-thaw cycles.

Precautions

TOMM40 Antibody (internal region) is for research use only and not for use in diagnostic or therapeutic procedures.

TOMM40 Antibody (internal region) - Protein Information

Name TOMM40

Synonyms C19orf1, PEREC1, TOM40

Function

Channel-forming protein essential for import of protein precursors into mitochondria (PubMed:15644312, PubMed:31206022). Plays a role

in the assembly of the mitochondrial membrane respiratory chain NADH dehydrogenase (Complex I) by forming a complex with BCAP31 and mediating the translocation of Complex I components from the cytosol to the mitochondria (PubMed:31206022).

Cellular Location

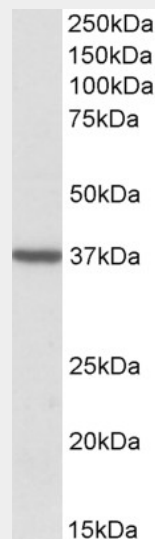
Mitochondrion outer membrane; Multi-pass membrane protein. Note=Associates with the mitochondria- associated ER membrane via interaction with BCAP31

TOMM40 Antibody (internal region) - Protocols

Provided below are standard protocols that you may find useful for product applications.

- [Western Blot](#)
- [Blocking Peptides](#)
- [Dot Blot](#)
- [Immunohistochemistry](#)
- [Immunofluorescence](#)
- [Immunoprecipitation](#)
- [Flow Cytometry](#)
- [Cell Culture](#)

TOMM40 Antibody (internal region) - Images



AF3090a (2 µg/ml) staining of Human Frontal Cortex lysate (35 µg protein in RIPA buffer). Primary incubation was 1 hour. Detected by chemiluminescence.

TOMM40 Antibody (internal region) - Background

Reported variants represent identical protein: NP_001122389.1, NP_001122388.1, NP_006105.1.

TOMM40 Antibody (internal region) - References

Use of expression data and the CGEMS genome-wide breast cancer association study to identify genes that may modify risk in BRCA1/2 mutation carriers. Walker LC, Waddell N, Ten Haaf A, Grimmond S, Spurdle AB. Breast cancer research and treatment 2008 Nov 112 (2): 229-36. PMID: 18095154