

TGFBI Antibody (internal region)
Peptide-affinity purified goat antibody
Catalog # AF3086a

Specification

TGFBI Antibody (internal region) - Product Information

Application	WB, IHC, IF
Primary Accession	Q15582
Other Accession	NP_000349.1 , 7045 , 21810 (mouse) , 24511 (rat)
Reactivity	Human
Predicted	Mouse, Rat, Dog
Host	Goat
Clonality	Polyclonal
Concentration	0.5 mg/ml
Isotype	IgG
Calculated MW	74681

TGFBI Antibody (internal region) - Additional Information

Gene ID 7045

Other Names

Transforming growth factor-beta-induced protein ig-h3, Beta ig-h3, Kerato-epithelin, RGD-containing collagen-associated protein, RGD-CAP, TGFBI, BIGH3

Format

0.5 mg/ml in Tris saline, 0.02% sodium azide, pH7.3 with 0.5% bovine serum albumin

Storage

Maintain refrigerated at 2-8°C for up to 6 months. For long term storage store at -20°C in small aliquots to prevent freeze-thaw cycles.

Precautions

TGFBI Antibody (internal region) is for research use only and not for use in diagnostic or therapeutic procedures.

TGFBI Antibody (internal region) - Protein Information

Name TGFBI

Synonyms BIGH3

Function

Plays a role in cell adhesion (PubMed:8024701). May play a role in cell-collagen interactions (By similarity).

Cellular Location

Secreted. Secreted, extracellular space, extracellular matrix Note=May be associated both with microfibrils and with the cell surface (PubMed:8077289).

Tissue Location

Highly expressed in the corneal epithelium (PubMed:27609313, PubMed:8077289). Expressed in heart, placenta, lung, liver, skeletal muscle, kidney and pancreas (PubMed:8077289)

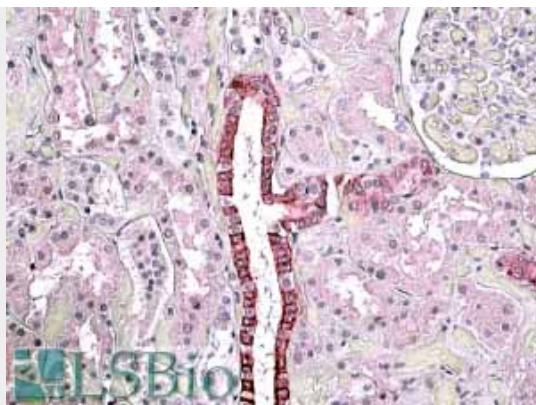
TGFBI Antibody (internal region) - Protocols

Provided below are standard protocols that you may find useful for product applications.

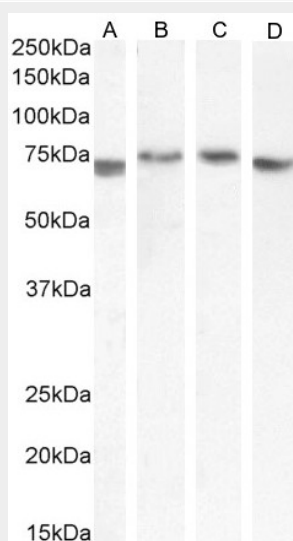
- [Western Blot](#)
- [Blocking Peptides](#)
- [Dot Blot](#)
- [Immunohistochemistry](#)
- [Immunofluorescence](#)
- [Immunoprecipitation](#)
- [Flow Cytometry](#)
- [Cell Culture](#)

TGFBI Antibody (internal region) - Images

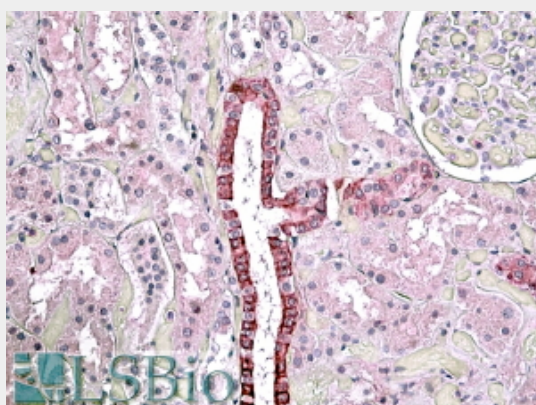
AF3086a (0.3 µg/ml) staining of Human Kidney lysate (35 µg protein in RIPA buffer). Primary incubation was 1 hour. Detected by chemiluminescence.



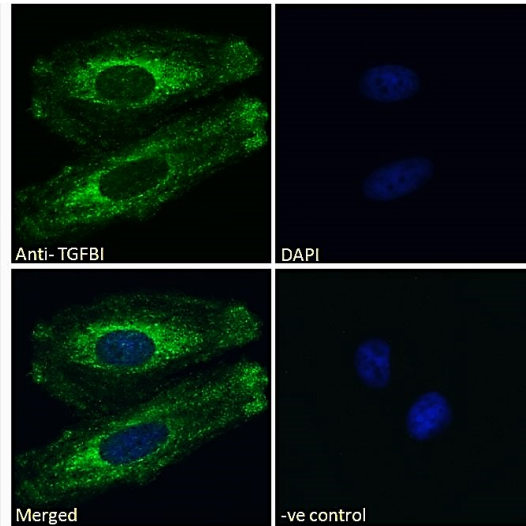
AF3086a (3.8 µg/ml) staining of paraffin embedded Human Kidney. Steamed antigen retrieval with citrate buffer pH 6, AP-staining.



EB09795 (0.3µg/ml) staining of Human Kidney (A), Colorectal cancer (B), (0.1ug/ml) Human Prostate (C) and Rat Kidney (D) lysate (35µg protein in RIPA buffer). Detected by chemiluminescence.



EB09795 (3.8µg/ml) staining of paraffin embedded Human Kidney. Steamed antigen retrieval with citrate buffer pH 6, AP-staining.



EB09795 Immunofluorescence analysis of paraformaldehyde fixed HeLa cells, permeabilized with 0.15% Triton. Primary incubation 1hr (10ug/ml) followed by Alexa Fluor 488 secondary antibody (2ug/ml), showing golgi and membrane staining. The nuclear stain is

TGFBI Antibody (internal region) - References

Clinical and genetic features of TGFBI-linked corneal dystrophies in Mexican population: description of novel mutations and novel genotype-phenotype correlations. Zenteno JC, Correa-Gomez V, Santacruz-Valdez C, Suarez-Sanchez R, Villanueva-Mendoza C, Experimental eye research 2009 Aug 89 (2): 172-7. PMID: 19303004