

MLX Antibody (internal region)
Peptide-affinity purified goat antibody
Catalog # AF3073a

Specification

MLX Antibody (internal region) - Product Information

Application	IHC
Primary Accession	O9UH92
Other Accession	NP_937848.1 , NP_937847.1 , NP_733752.1 , 6945 , 21428 (mouse) , 360631 (rat)
Reactivity	Human
Predicted	Mouse, Rat, Dog
Host	Goat
Clonality	Polyclonal
Concentration	0.5 mg/ml
Isotype	IgG
Calculated MW	33300

MLX Antibody (internal region) - Additional Information

Gene ID 6945

Other Names

Max-like protein X, Class D basic helix-loop-helix protein 13, bHLHD13, Max-like bHLHZip protein, Protein BigMax, Transcription factor-like protein 4, MLX, BHLHD13, TCFL4

Format

0.5 mg/ml in Tris saline, 0.02% sodium azide, pH7.3 with 0.5% bovine serum albumin

Storage

Maintain refrigerated at 2-8°C for up to 6 months. For long term storage store at -20°C in small aliquots to prevent freeze-thaw cycles.

Precautions

MLX Antibody (internal region) is for research use only and not for use in diagnostic or therapeutic procedures.

MLX Antibody (internal region) - Protein Information

Name MLX

Synonyms BHLHD13, TCFL4

Function

Transcription regulator. Forms a sequence-specific DNA- binding protein complex with MAD1, MAD4, MNT, WBSCR14 and MLXIP which recognizes the core sequence 5'-CACGTG-3'. The TCFL4-MAD1, TCFL4-MAD4, TCFL4-WBSCR14 complexes are transcriptional repressors. Plays a role

in transcriptional activation of glycolytic target genes. Involved in glucose-responsive gene regulation.

Cellular Location

[Isoform Alpha]: Cytoplasm. Note=Found predominantly in the cytoplasm (PubMed:10918583).
[Isoform Gamma]: Nucleus. Note=Found predominantly in the nucleus (PubMed:10918583).

Tissue Location

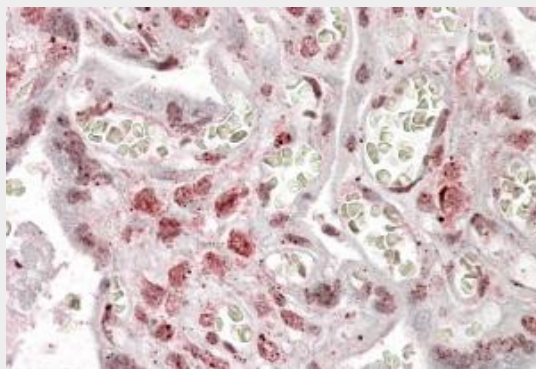
Expressed in all tissues tested, including spleen, thymus, prostate, ovary, intestine, colon, peripheral blood leukocyte, heart, liver, skeletal muscle and kidney. Lower levels of expression in testis, brain, placenta and lung.

MLX Antibody (internal region) - Protocols

Provided below are standard protocols that you may find useful for product applications.

- [Western Blot](#)
- [Blocking Peptides](#)
- [Dot Blot](#)
- [Immunohistochemistry](#)
- [Immunofluorescence](#)
- [Immunoprecipitation](#)
- [Flow Cytometry](#)
- [Cell Culture](#)

MLX Antibody (internal region) - Images



AF3073a (3.8 µg/ml) staining of paraffin embedded Human Placenta. Steamed antigen retrieval with citrate buffer pH 6, AP-staining.

MLX Antibody (internal region) - Background

This antibody is expected to recognize all three reported isoforms (NP_937848.1; NP_937847.1; NP_733752.1).

MLX Antibody (internal region) - References

Glucose sensing by MondoA:Mix complexes: a role for hexokinases and direct regulation of thioredoxin-interacting protein expression. Stoltzman CA, Peterson CW, Breen KT, Muoio DM, Billin AN, Ayer DE, Proceedings of the National Academy of Sciences of the United States of America 2008 May 105 (19): 6912-7. PMID: 18458340