

DEFA1/3 precursor Antibody (internal region)
Peptide-affinity purified goat antibody
Catalog # AF3064a**Specification**

DEFA1/3 precursor Antibody (internal region) - Product Information

Application	IHC, WB
Primary Accession	P59666
Other Accession	NP_004075.1 , NP_005208.1 , 1667 , 1668
Reactivity	Human
Host	Goat
Clonality	Polyclonal
Concentration	0.5 mg/ml
Isotype	IgG
Calculated MW	10245

DEFA1/3 precursor Antibody (internal region) - Additional Information**Gene ID** 1668**Other Names**

Neutrophil defensin 3, Defensin, alpha 3, HNP-3, HP-3, HP3, HP 3-56, Neutrophil defensin 2, HNP-2, HP-2, HP2, DEFA3, DEF3

Format

0.5 mg/ml in Tris saline, 0.02% sodium azide, pH7.3 with 0.5% bovine serum albumin

Storage

Maintain refrigerated at 2-8°C for up to 6 months. For long term storage store at -20°C in small aliquots to prevent freeze-thaw cycles.

Precautions

DEFA1/3 precursor Antibody (internal region) is for research use only and not for use in diagnostic or therapeutic procedures.

DEFA1/3 precursor Antibody (internal region) - Protein Information**Name** DEFA3**Synonyms** DEF3**Function**Effector molecule of the innate immune system that acts via antibiotic-like properties against a broad array of infectious agents including bacteria, fungi, and viruses (PubMed:[15616305](http://www.uniprot.org/citations/15616305)), PubMed:[15772169](http://www.uniprot.org/citations/15772169)), PubMed:[17142766](http://www.uniprot.org/citations/17142766)). Possesses

the ability to neutralize bacterial toxins such as B. anthracis lethal factor, Clostridium difficile cytotoxin B as well as leukocidin produced by Staphylococcus aureus (PubMed:15772169, PubMed:18435932, PubMed:25963798). Blocks also herpes simplex virus infection by interacting with envelope glycoprotein B and thus preventing its binding to heparan sulfate, the receptor for attachment (PubMed:17142766).

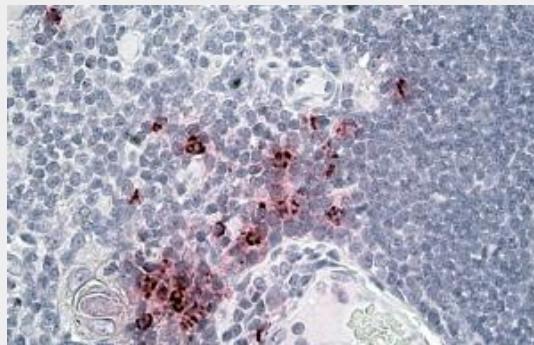
Cellular Location
Secreted.

DEFA1/3 precursor Antibody (internal region) - Protocols

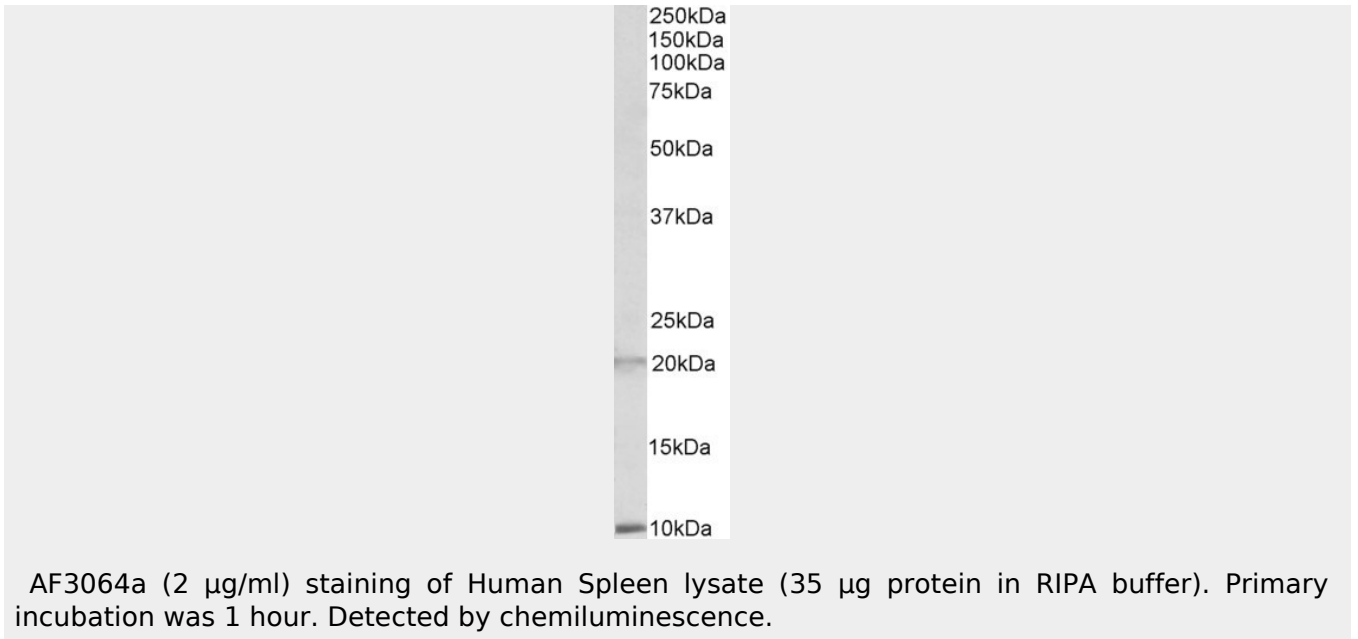
Provided below are standard protocols that you may find useful for product applications.

- [Western Blot](#)
- [Blocking Peptides](#)
- [Dot Blot](#)
- [Immunohistochemistry](#)
- [Immunofluorescence](#)
- [Immunoprecipitation](#)
- [Flow Cytometry](#)
- [Cell Culture](#)

DEFA1/3 precursor Antibody (internal region) - Images



AF3064a (3.8 µg/ml) staining of paraffin embedded Human Thymus. Steamed antigen retrieval with citrate buffer pH 6, AP-staining.



DEFA1/3 precursor Antibody (internal region) - Background

This antibody is expected to equally recognize DEFA1 precursor and DEFA3 precursor.

DEFA1/3 precursor Antibody (internal region) - References

Dual role of alpha-defensin-1 in anti-HIV-1 innate immunity. Chang TL, Vargas J Jr, DelPortillo A, Klotman ME. J Clin Invest. 2005 Mar;115(3):765-73. PMID: 15719067