

**CPT2 (aa141-154) Antibody (internal region)**  
Peptide-affinity purified goat antibody  
Catalog # AF3062a

### Specification

---

### CPT2 (aa141-154) Antibody (internal region) - Product Information

Application	WB
Primary Accession	<a href="#">P23786</a>
Other Accession	<a href="#">NP_000089.1</a> , <a href="#">1376</a>
Reactivity	Human, Mouse
Predicted	Rat, Pig, Dog
Host	Goat
Clonality	Polyclonal
Concentration	0.5 mg/ml
Isotype	IgG
Calculated MW	73777

### CPT2 (aa141-154) Antibody (internal region) - Additional Information

Gene ID 1376

#### Other Names

Carnitine O-palmitoyltransferase 2, mitochondrial, 2.3.1.21, Carnitine palmitoyltransferase II, CPT II, CPT2, CPT1

#### Format

0.5 mg/ml in Tris saline, 0.02% sodium azide, pH7.3 with 0.5% bovine serum albumin

#### Storage

Maintain refrigerated at 2-8°C for up to 6 months. For long term storage store at -20°C in small aliquots to prevent freeze-thaw cycles.

#### Precautions

CPT2 (aa141-154) Antibody (internal region) is for research use only and not for use in diagnostic or therapeutic procedures.

### CPT2 (aa141-154) Antibody (internal region) - Protein Information

Name CPT2 ([HGNC:2330](#))

Synonyms CPT1

#### Function

Involved in the intramitochondrial synthesis of acylcarnitines from accumulated acyl-CoA metabolites (PubMed: [20538056](http://www.uniprot.org/citations/20538056), PubMed: [24780397](http://www.uniprot.org/citations/24780397) target="\_blank">24780397</a>). Reconverts acylcarnitines back into the respective acyl-CoA

esters that can then undergo beta-oxidation, an essential step for the mitochondrial uptake of long-chain fatty acids and their subsequent beta-oxidation in the mitochondrion. Active with medium (C8- C12) and long-chain (C14-C18) acyl-CoA esters (PubMed:<a href="http://www.uniprot.org/citations/20538056" target="\_blank">20538056</a>).

#### Cellular Location

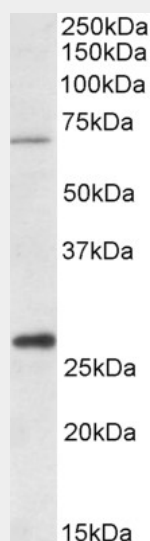
Mitochondrion inner membrane; Peripheral membrane protein; Matrix side

#### CPT2 (aa141-154) Antibody (internal region) - Protocols

Provided below are standard protocols that you may find useful for product applications.

- [Western Blot](#)
- [Blocking Peptides](#)
- [Dot Blot](#)
- [Immunohistochemistry](#)
- [Immunofluorescence](#)
- [Immunoprecipitation](#)
- [Flow Cytometry](#)
- [Cell Culture](#)

#### CPT2 (aa141-154) Antibody (internal region) - Images



AF3062a (1 µg/ml) staining of Human Liver lysate (35 µg protein in RIPA buffer). Primary incubation was 1 hour. Detected by chemiluminescence.

#### CPT2 (aa141-154) Antibody (internal region) - References

CPT2 gene mutations resulting in lethal neonatal or severe infantile carnitine palmitoyltransferase II deficiency. Isackson PJ, Bennett MJ, Lichter-Konecki U, Willis M, Nyhan WL, Sutton VR, Tein I, Vladutiu GD, Molecular genetics and metabolism 2008 Aug 94 (4): 422-7. PMID: 18550408