

ATP1B1 Antibody (internal region)
Peptide-affinity purified goat antibody
Catalog # AF3021a**Specification**

ATP1B1 Antibody (internal region) - Product Information

Application	WB
Primary Accession	P05026
Other Accession	NP_001668.1 , NP_001001787.1 , 481
Reactivity	Mouse, Rat
Predicted	Human, Pig, Dog
Host	Goat
Clonality	Polyclonal
Concentration	0.5 mg/ml
Isotype	IgG
Calculated MW	35061

ATP1B1 Antibody (internal region) - Additional Information**Gene ID** 481**Other Names**

Sodium/potassium-transporting ATPase subunit beta-1, Sodium/potassium-dependent ATPase subunit beta-1, ATP1B1, ATP1B

Format

0.5 mg/ml in Tris saline, 0.02% sodium azide, pH7.3 with 0.5% bovine serum albumin

Storage

Maintain refrigerated at 2-8°C for up to 6 months. For long term storage store at -20°C in small aliquots to prevent freeze-thaw cycles.

Precautions

ATP1B1 Antibody (internal region) is for research use only and not for use in diagnostic or therapeutic procedures.

ATP1B1 Antibody (internal region) - Protein Information**Name** ATP1B1**Synonyms** ATP1B**Function**

This is the non-catalytic component of the active enzyme, which catalyzes the hydrolysis of ATP coupled with the exchange of Na(+) and K(+) ions across the plasma membrane. The beta subunit regulates, through assembly of alpha/beta heterodimers, the number of sodium pumps transported to the plasma membrane (PubMed:<a

[19694409](http://www.uniprot.org/citations/19694409)). Plays a role in innate immunity by enhancing virus-triggered induction of interferons (IFNs) and interferon stimulated genes (ISGs). Mechanistically, enhances the ubiquitination of TRAF3 and TRAF6 as well as the phosphorylation of TAK1 and TBK1 (PubMed: [34011520](http://www.uniprot.org/citations/34011520)).

Cellular Location

Cell membrane; Single-pass type II membrane protein. Apical cell membrane {ECO:0000250|UniProtKB:P07340}; Single-pass type II membrane protein. Cell membrane, sarcolemma {ECO:0000250|UniProtKB:P14094}. Note=Colocalizes with OBSCN at the intercalated disk and sarcolemma in cardiomyocytes. Localizes in long striations at the level of Z and M lines {ECO:0000250|UniProtKB:P14094}

Tissue Location

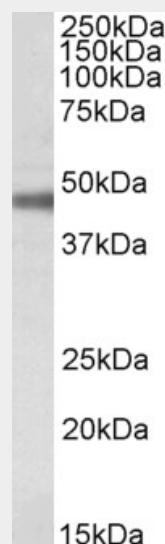
Found in most tissues.

ATP1B1 Antibody (internal region) - Protocols

Provided below are standard protocols that you may find useful for product applications.

- [Western Blot](#)
- [Blocking Peptides](#)
- [Dot Blot](#)
- [Immunohistochemistry](#)
- [Immunofluorescence](#)
- [Immunoprecipitation](#)
- [Flow Cytometry](#)
- [Cell Culture](#)

ATP1B1 Antibody (internal region) - Images



AF3021a (0.1 µg/ml) staining of Rat Retina lysate (35 µg protein in RIPA buffer). Primary incubation was 1 hour. Detected by chemiluminescence.

ATP1B1 Antibody (internal region) - Background

This antibody is expected to recognize both reported isoforms (NP_001668.1; NP_001001787.1).

ATP1B1 Antibody (internal region) - References

Human Na⁺,K⁺-ATPase genes. Beta-subunit gene family contains at least one gene and one pseudogene Ushkaryov YuA, Monastyrskaya GS, Broude NE, Nikiforova NN, Bessarab DA, Orlova MYu, Petrukhin KE, Modyanov NN, Sverdlov ED FEBS Lett. 1989 Nov 257 (2): 439-42 PMID: 2555225