

**Copine 1 Antibody (C-Term)**  
Peptide-affinity purified goat antibody  
Catalog # AF2967a

**Specification**

---

**Copine 1 Antibody (C-Term) - Product Information**

Application	WB
Primary Accession	<a href="#">O99829</a>
Other Accession	<a href="#">NP_690902.1</a> , <a href="#">NP_003906.2</a> , <a href="#">8904</a>
Reactivity	Human
Predicted	Dog
Host	Goat
Clonality	Polyclonal
Concentration	0.5 mg/ml
Isotype	IgG
Calculated MW	59059

**Copine 1 Antibody (C-Term) - Additional Information**

**Gene ID** 8904

**Other Names**

Copine-1, Copine I, CPNE1, CPN1

**Format**

0.5 mg/ml in Tris saline, 0.02% sodium azide, pH7.3 with 0.5% bovine serum albumin

**Storage**

Maintain refrigerated at 2-8°C for up to 6 months. For long term storage store at -20°C in small aliquots to prevent freeze-thaw cycles.

**Precautions**

Copine 1 Antibody (C-Term) is for research use only and not for use in diagnostic or therapeutic procedures.

**Copine 1 Antibody (C-Term) - Protein Information**

**Name** CPNE1 ([HGNC:2314](#))

**Synonyms** CPN1

**Function**

Calcium-dependent phospholipid-binding protein that plays a role in calcium-mediated intracellular processes (PubMed: <http://www.uniprot.org/citations/14674885> target="\_blank">14674885</a>). Involved in the TNF-alpha receptor signaling pathway in a calcium- dependent manner (PubMed: <http://www.uniprot.org/citations/14674885> target="\_blank">14674885</a>). Exhibits calcium-dependent phospholipid binding properties

(PubMed:<a href="http://www.uniprot.org/citations/19539605" target="\_blank">19539605</a>, PubMed:<a href="http://www.uniprot.org/citations/9430674" target="\_blank">9430674</a>). Plays a role in neuronal progenitor cell differentiation; induces neurite outgrowth via a AKT-dependent signaling cascade and calcium- independent manner (PubMed:<a href="http://www.uniprot.org/citations/23263657" target="\_blank">23263657</a>, PubMed:<a href="http://www.uniprot.org/citations/25450385" target="\_blank">25450385</a>). May recruit target proteins to the cell membrane in a calcium-dependent manner (PubMed:<a href="http://www.uniprot.org/citations/12522145" target="\_blank">12522145</a>). May function in membrane trafficking (PubMed:<a href="http://www.uniprot.org/citations/9430674" target="\_blank">9430674</a>). Involved in TNF-alpha-induced NF-kappa-B transcriptional repression by inducing endoprotease processing of the transcription factor NF-kappa-B p65/RELA subunit (PubMed:<a href="http://www.uniprot.org/citations/18212740" target="\_blank">18212740</a>). Also induces endoprotease processing of NF-kappa-B p50/NFKB1, p52/NFKB2, RELB and REL (PubMed:<a href="http://www.uniprot.org/citations/18212740" target="\_blank">18212740</a>).

#### Cellular Location

Nucleus. Cytoplasm. Cell membrane Note=Translocates to the cell membrane in a calcium-dependent manner (PubMed:21087455, PubMed:25450385).

#### Tissue Location

Expressed in neutrophils (at protein level) (PubMed:12949241). Widely expressed. Expressed in the brain. Expressed in neutrophil precursors from bone marrow and peripheral blood (PubMed:12949241).

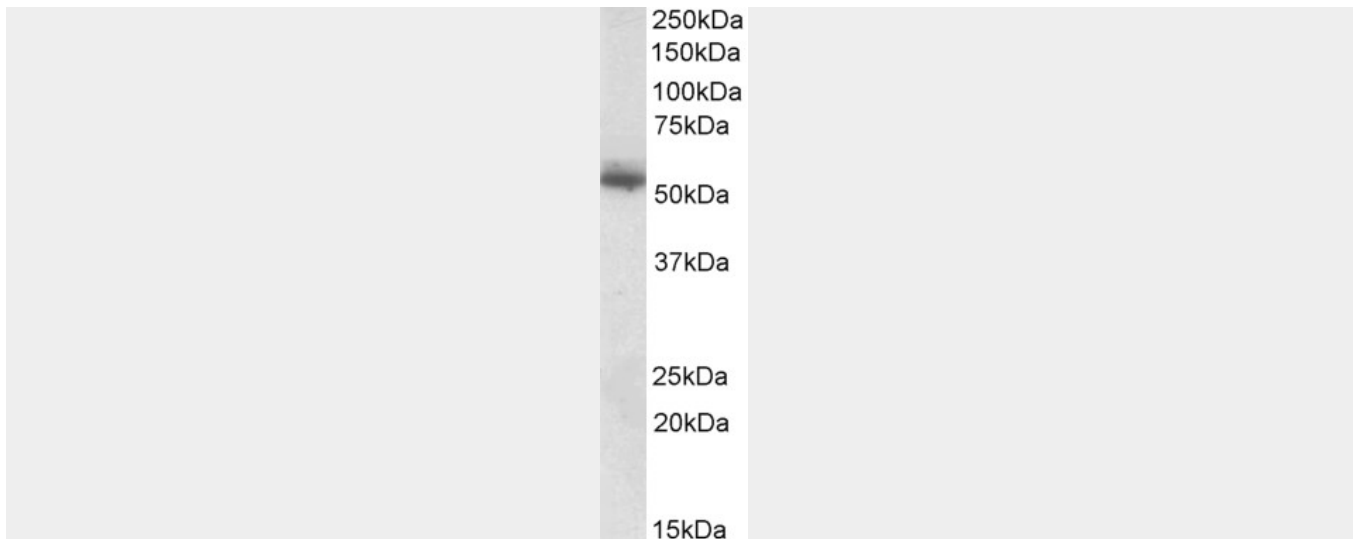
#### Copine 1 Antibody (C-Term) - Protocols

Provided below are standard protocols that you may find useful for product applications.

- [Western Blot](#)
- [Blocking Peptides](#)
- [Dot Blot](#)
- [Immunohistochemistry](#)
- [Immunofluorescence](#)
- [Immunoprecipitation](#)
- [Flow Cytometry](#)
- [Cell Culture](#)

#### Copine 1 Antibody (C-Term) - Images





AF2967a (0.1  $\mu\text{g/ml}$ ) staining of Human Skin lysate (35  $\mu\text{g}$  protein in RIPA buffer). Primary incubation was 1 hour. Detected by chemiluminescence.

#### **Copine 1 Antibody (C-Term) - Background**

This antibody is expected to recognize isoform a and b (NP\_003906.2; NP\_690902.1). Reported variants represent identical protein: NP\_690905.1, NP\_690902.1, NP\_690903.1, NP\_690906.1, NP\_690904.1, NP\_690907.1, NP\_690908.1.

#### **Copine 1 Antibody (C-Term) - References**

Upregulation of Copine1 in trabecular meshwork cells of POAG patients: a membrane proteomics approach. Zhang Y, Gao Q, Duan S, He Y, Sun X, Jiang R, Duan Y, Zhong X, Ge J. Molecular vision 2008 14 : 1028-36. PMID: 18523666