

ACPP Antibody (internal region)
Peptide-affinity purified goat antibody
Catalog # AF2964a

Specification

ACPP Antibody (internal region) - Product Information

Application	WB, IHC
Primary Accession	P15309
Other Accession	NP_001090.2 , 55 , 56318 (mouse) , 56780 (rat)
Reactivity	Human
Predicted	Mouse, Rat, Dog
Host	Goat
Clonality	Polyclonal
Concentration	0.5 mg/ml
Isotype	IgG
Calculated MW	44566

ACPP Antibody (internal region) - Additional Information

Gene ID 55

Other Names

Prostatic acid phosphatase, PAP, 3.1.3.2, 5'-nucleotidase, 5'-NT, 3.1.3.5, Ecto-5'-nucleotidase, Thiamine monophosphatase, TMPase, PAPf39, ACPP

Format

0.5 mg/ml in Tris saline, 0.02% sodium azide, pH7.3 with 0.5% bovine serum albumin

Storage

Maintain refrigerated at 2-8°C for up to 6 months. For long term storage store at -20°C in small aliquots to prevent freeze-thaw cycles.

Precautions

ACPP Antibody (internal region) is for research use only and not for use in diagnostic or therapeutic procedures.

ACPP Antibody (internal region) - Protein Information

Name ACP3 ([HGNC:125](#))

Synonyms ACPP

Function

A non-specific tyrosine phosphatase that dephosphorylates a diverse number of substrates under acidic conditions (pH 4-6) including alkyl, aryl, and acyl orthophosphate monoesters and phosphorylated proteins (PubMed:10506173, PubMed:<a href="http://www.uniprot.org/citations/15280042"

target="_blank">15280042, PubMed:20498373, PubMed:9584846). Has lipid phosphatase activity and inactivates lysophosphatidic acid in seminal plasma (PubMed:10506173, PubMed:15280042).

Cellular Location

[Isoform 1]: Secreted

Tissue Location

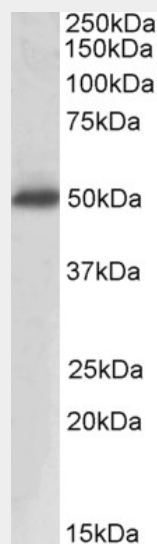
Highly expressed in the prostate, restricted to glandular and ductal epithelial cells. Also expressed in bladder, kidney, pancreas, lung, cervix, testis and ovary. Weak expression in a subset of pancreatic islet cells, squamous epithelia, the pilosebaceous unit, colonic neuroendocrine cells and skin adnexal structures. Low expression in prostate carcinoma cells and tissues

ACPP Antibody (internal region) - Protocols

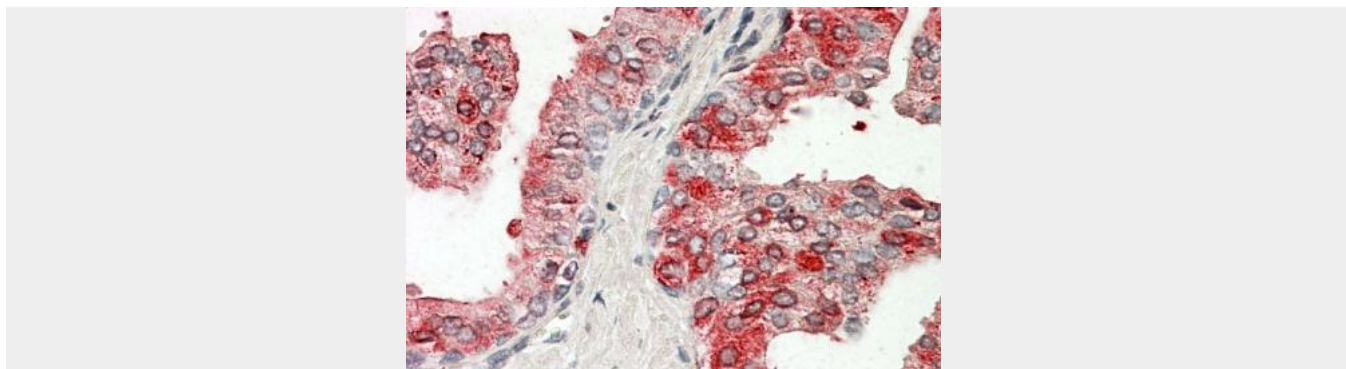
Provided below are standard protocols that you may find useful for product applications.

- [Western Blot](#)
- [Blocking Peptides](#)
- [Dot Blot](#)
- [Immunohistochemistry](#)
- [Immunofluorescence](#)
- [Immunoprecipitation](#)
- [Flow Cytometry](#)
- [Cell Culture](#)

ACPP Antibody (internal region) - Images



AF2964a (0.3 µg/ml) staining of Human Prostate lysate (35 µg protein in RIPA buffer). Primary incubation was 1 hour. Detected by chemiluminescence.



AF2964a (3.8 µg/ml) staining of paraffin embedded Human Prostate. Steamed antigen retrieval with citrate buffer pH 6, AP-staining.

ACPP Antibody (internal region) - Background

This antibody is expected to recognize both isoforms (NP_001090.2; NP_001127666.1).

ACPP Antibody (internal region) - References

Prostatic acid phosphatase is not a prostate specific target. Quintero IB, Araujo CL, Pulkka AE, Wirkkala RS, Herrala AM, Eskelinen EL, Jokitalo E, Hellström PA, Tuominen HJ, Hirvikoski PP, Vihko PT. Cancer research 2007 Jul 67 (14): 6549-54. PMID: 17638863