

**SRD5A1 Antibody (internal region)**  
Peptide-affinity purified goat antibody  
Catalog # AF2926a

**Specification**

---

**SRD5A1 Antibody (internal region) - Product Information**

|                   |  |
|-------------------|--|
| Application       | IHC  |
| Primary Accession | <a href="#">P18405</a>   |
| Other Accession   | <a href="#">NP_001038.1</a> , <a href="#">6715</a> , <a href="#">78925 (mouse)</a> |
| Predicted         | Human, Mouse, Rat, Dog   |
| Host              | Goat   |
| Clonality         | Polyclonal   |
| Concentration     | 0.5 mg/ml  |
| Isotype           | IgG  |
| Calculated MW     | 29459  |

**SRD5A1 Antibody (internal region) - Additional Information**

**Gene ID** 6715

**Other Names**

3-oxo-5-alpha-steroid 4-dehydrogenase 1, 1.3.1.22, SR type 1, Steroid 5-alpha-reductase 1, S5AR 1, SRD5A1

**Format**

0.5 mg/ml in Tris saline, 0.02% sodium azide, pH7.3 with 0.5% bovine serum albumin

**Storage**

Maintain refrigerated at 2-8°C for up to 6 months. For long term storage store at -20°C in small aliquots to prevent freeze-thaw cycles.

**Precautions**

SRD5A1 Antibody (internal region) is for research use only and not for use in diagnostic or therapeutic procedures.

**SRD5A1 Antibody (internal region) - Protein Information**

**Name** SRD5A1 ([HGNC:11284](#))

**Function**

Converts testosterone into 5-alpha-dihydrotestosterone and progesterone or corticosterone into their corresponding 5-alpha-3-oxosteroids. It plays a central role in sexual differentiation and androgen physiology.

**Cellular Location**

Microsome membrane; Multi-pass membrane protein. Endoplasmic reticulum membrane; Multi-pass membrane protein

### Tissue Location

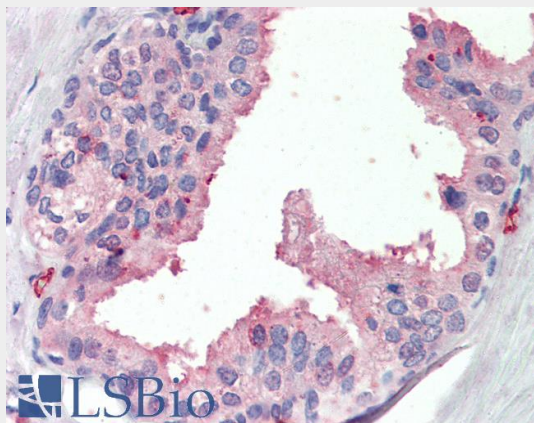
Liver and prostate (at a low level).

### SRD5A1 Antibody (internal region) - Protocols

Provided below are standard protocols that you may find useful for product applications.

- [Western Blot](#)
- [Blocking Peptides](#)
- [Dot Blot](#)
- [Immunohistochemistry](#)
- [Immunofluorescence](#)
- [Immunoprecipitation](#)
- [Flow Cytometry](#)
- [Cell Culture](#)

### SRD5A1 Antibody (internal region) - Images



AF2926a (3.75 µg/ml) staining of paraffin embedded Human Prostate. Steamed antigen retrieval with citrate buffer pH 6, AP-staining.

### SRD5A1 Antibody (internal region) - References

VDR and SRD5A2 polymorphisms combine to increase risk for prostate cancer in both non-Hispanic White and Hispanic White men. Torkko KC, van Bokhoven A, Mai P, Beuten J, Balic I, Byers TE, Hokanson JE, Norris JM, BarÃ³n AE, Lucia MS, Thompson IM, Leach RJ, Clin. Cancer Res. 2008 May 14 (10): 3223-9. PMID: 18483391