

**SLC47A1 Antibody (internal region, near C-Term)**  
Peptide-affinity purified goat antibody  
Catalog # AF2914a

**Specification**

---

**SLC47A1 Antibody (internal region, near C-Term) - Product Information**

Application	WB
Primary Accession	<a href="#">O96FL8</a>
Other Accession	<a href="#">NP_060712.2</a> , <a href="#">55244</a>
Reactivity	Human
Host	Goat
Clonality	Polyclonal
Concentration	0.5 mg/ml
Isotype	IgG
Calculated MW	61922

**SLC47A1 Antibody (internal region, near C-Term) - Additional Information**

**Gene ID** 55244

**Other Names**

Multidrug and toxin extrusion protein 1, MATE-1, hMATE-1, Solute carrier family 47 member 1, SLC47A1, MATE1

**Format**

0.5 mg/ml in Tris saline, 0.02% sodium azide, pH7.3 with 0.5% bovine serum albumin

**Storage**

Maintain refrigerated at 2-8°C for up to 6 months. For long term storage store at -20°C in small aliquots to prevent freeze-thaw cycles.

**Precautions**

SLC47A1 Antibody (internal region, near C-Term) is for research use only and not for use in diagnostic or therapeutic procedures.

**SLC47A1 Antibody (internal region, near C-Term) - Protein Information**

**Name** SLC47A1 ([HGNC:25588](#))

**Function**

Multidrug efflux pump that functions as a H(+)/organic cation antiporter (PubMed:[16330770](http://www.uniprot.org/citations/16330770), PubMed:[17509534](http://www.uniprot.org/citations/17509534)). Plays a physiological role in the excretion of cationic compounds including endogenous metabolites, drugs, toxins through the kidney and liver, into urine and bile respectively (PubMed:[16330770](http://www.uniprot.org/citations/16330770), PubMed:[17495125](http://www.uniprot.org/citations/17495125), PubMed:[17495125](http://www.uniprot.org/citations/17495125)).

<http://www.uniprot.org/citations/17509534> target="\_blank">17509534</a>, PubMed:<a href="http://www.uniprot.org/citations/17582384" target="\_blank">17582384</a>, PubMed:<a href="http://www.uniprot.org/citations/18305230" target="\_blank">18305230</a>, PubMed:<a href="http://www.uniprot.org/citations/19158817" target="\_blank">19158817</a>, PubMed:<a href="http://www.uniprot.org/citations/21128598" target="\_blank">21128598</a>, PubMed:<a href="http://www.uniprot.org/citations/24961373" target="\_blank">24961373</a>). Mediates the efflux of endogenous compounds such as creatinine, vitamin B1/thiamine, agmatine and estrone-3-sulfate (PubMed:<a href="http://www.uniprot.org/citations/16330770" target="\_blank">16330770</a>, PubMed:<a href="http://www.uniprot.org/citations/17495125" target="\_blank">17495125</a>, PubMed:<a href="http://www.uniprot.org/citations/17509534" target="\_blank">17509534</a>, PubMed:<a href="http://www.uniprot.org/citations/17582384" target="\_blank">17582384</a>, PubMed:<a href="http://www.uniprot.org/citations/18305230" target="\_blank">18305230</a>, PubMed:<a href="http://www.uniprot.org/citations/19158817" target="\_blank">19158817</a>, PubMed:<a href="http://www.uniprot.org/citations/21128598" target="\_blank">21128598</a>, PubMed:<a href="http://www.uniprot.org/citations/24961373" target="\_blank">24961373</a>). May also contribute to regulate the transport of cationic compounds in testis across the blood-testis-barrier (Probable).

#### Cellular Location

Cell membrane; Multi-pass membrane protein. Apical cell membrane; Multi-pass membrane protein. Note=Localizes to the plasma membrane; at the brush border membranes of the proximal tubules (kidney) and at the bile caniculi (liver).

#### Tissue Location

Widely expressed. The highest expression is found in adrenal gland, and to a lower extent in liver, skeletal muscle and kidney. In testis, primarily localized throughout the adluminal compartment of the seminiferous tubules with expression at the peritubular myoid cells and Leydig cells (PubMed:35307651)

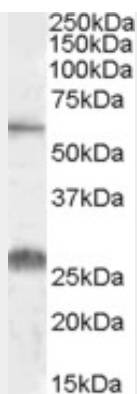
#### SLC47A1 Antibody (internal region, near C-Term) - Protocols

Provided below are standard protocols that you may find useful for product applications.

- [Western Blot](#)
- [Blocking Peptides](#)
- [Dot Blot](#)
- [Immunohistochemistry](#)
- [Immunofluorescence](#)
- [Immunoprecipitation](#)
- [Flow Cytometry](#)
- [Cell Culture](#)

#### SLC47A1 Antibody (internal region, near C-Term) - Images





AF2914a (0.1  $\mu\text{g/ml}$ ) staining of Human Kidney lysate (35  $\mu\text{g}$  protein in RIPA buffer). Primary incubation was 1 hour. Detected by chemiluminescence.

#### **SLC47A1 Antibody (internal region, near C-Term) - References**

Transport of paraquat by human organic cation transporters and multidrug and toxic compound extrusion family. Chen Y, Zhang S, Sorani M, Giacomini KM. J. Pharmacol. Exp. Ther. 2007 Aug 322 (2): 695-700. PMID: 17495125