

SULF2 Antibody (internal region)
Peptide-affinity purified goat antibody
Catalog # AF2897a

Specification

SULF2 Antibody (internal region) - Product Information

Application	WB
Primary Accession	Q8IWU5
Other Accession	NP_061325.1 , NP_940998.1 , 55959
Reactivity	Human
Host	Goat
Clonality	Polyclonal
Concentration	0.5 mg/ml
Isotype	IgG
Calculated MW	100455

SULF2 Antibody (internal region) - Additional Information

Gene ID 55959

Other Names

Extracellular sulfatase Sulf-2, hSulf-2, 3.1.6.-, SULF2, KIAA1247

Format

0.5 mg/ml in Tris saline, 0.02% sodium azide, pH7.3 with 0.5% bovine serum albumin

Storage

Maintain refrigerated at 2-8°C for up to 6 months. For long term storage store at -20°C in small aliquots to prevent freeze-thaw cycles.

Precautions

SULF2 Antibody (internal region) is for research use only and not for use in diagnostic or therapeutic procedures.

SULF2 Antibody (internal region) - Protein Information

Name SULF2

Synonyms KIAA1247

Function

Exhibits arylsulfatase activity and highly specific endoglucosamine-6-sulfatase activity (PubMed: [12368295](http://www.uniprot.org/citations/12368295), PubMed: [30788513](http://www.uniprot.org/citations/30788513), PubMed: [35294879](http://www.uniprot.org/citations/35294879)). It can remove sulfate from the C-6 position of glucosamine within specific subregions of intact heparin (PubMed: [12368295](http://www.uniprot.org/citations/12368295))

target="_blank">12368295, PubMed:30788513, PubMed:35294879).

Cellular Location

Endoplasmic reticulum {ECO:0000250|UniProtKB:Q8VI60}. Golgi apparatus, Golgi stack {ECO:0000250|UniProtKB:Q8VI60}. Cell surface

Tissue Location

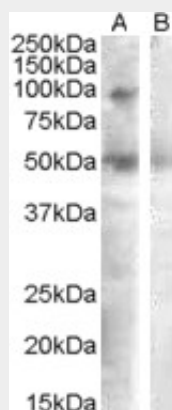
Expressed at highest levels in the ovary, skeletal muscle, stomach, brain, uterus, heart, kidney and placenta

SULF2 Antibody (internal region) - Protocols

Provided below are standard protocols that you may find useful for product applications.

- [Western Blot](#)
- [Blocking Peptides](#)
- [Dot Blot](#)
- [Immunohistochemistry](#)
- [Immunofluorescence](#)
- [Immunoprecipitation](#)
- [Flow Cytometry](#)
- [Cell Culture](#)

SULF2 Antibody (internal region) - Images



AF2897a (0.3 µg/ml) staining of Human Ovary lysate (35 µg protein in RIPA buffer) with (B) and without (A) blocking with the immunising peptide. Primary incubation was 1 hour. Detected by chemiluminescence.

SULF2 Antibody (internal region) - Background

This antibody is expected to recognize both reported isoforms (NP_061325.1; NP_940998.1)

SULF2 Antibody (internal region) - References

HSulf-1 and HSulf-2 are potent inhibitors of myeloma tumor growth in vivo. Dai Y, Yang Y, MacLeod V, Yue X, Rapraeger AC, Shriver Z, Venkataraman G, Sasisekharan R, Sanderson RD. J Biol Chem. 2005 Dec 2;280(48):40066-73. PMID: 16192265