

ITIH4 Antibody (internal region)
Peptide-affinity purified goat antibody
Catalog # AF2882a

Specification

ITIH4 Antibody (internal region) - Product Information

Application	IHC
Primary Accession	O14624
Other Accession	NP_002209.2 , 3700
Reactivity	Human
Host	Goat
Clonality	Polyclonal
Concentration	0.5 mg/ml
Isotype	IgG
Calculated MW	103357

ITIH4 Antibody (internal region) - Additional Information

Gene ID 3700

Other Names

Inter-alpha-trypsin inhibitor heavy chain H4, ITI heavy chain H4, ITI-HC4, Inter-alpha-inhibitor heavy chain 4, Inter-alpha-trypsin inhibitor family heavy chain-related protein, IHRP, Plasma kallikrein sensitive glycoprotein 120, Gp120, PK-120, 70 kDa inter-alpha-trypsin inhibitor heavy chain H4, 35 kDa inter-alpha-trypsin inhibitor heavy chain H4, ITIH4, IHRP, ITIHL1, PK120

Format

0.5 mg/ml in Tris saline, 0.02% sodium azide, pH7.3 with 0.5% bovine serum albumin

Storage

Maintain refrigerated at 2-8°C for up to 6 months. For long term storage store at -20°C in small aliquots to prevent freeze-thaw cycles.

Precautions

ITIH4 Antibody (internal region) is for research use only and not for use in diagnostic or therapeutic procedures.

ITIH4 Antibody (internal region) - Protein Information

Name ITIH4

Synonyms IHRP, ITIHL1, PK120

Function

Type II acute-phase protein (APP) involved in inflammatory responses to trauma. May also play a role in liver development or regeneration.

Cellular Location

Secreted.

Tissue Location

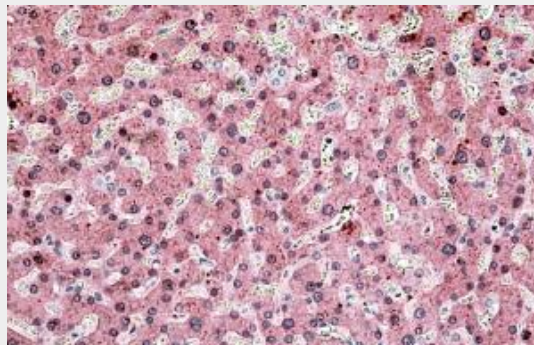
Liver specific.

ITIH4 Antibody (internal region) - Protocols

Provided below are standard protocols that you may find useful for product applications.

- [Western Blot](#)
- [Blocking Peptides](#)
- [Dot Blot](#)
- [Immunohistochemistry](#)
- [Immunofluorescence](#)
- [Immunoprecipitation](#)
- [Flow Cytometry](#)
- [Cell Culture](#)

ITIH4 Antibody (internal region) - Images



AF2882a (3.8 µg/ml) staining of paraffin embedded Human Liver. Steamed antigen retrieval with citrate buffer pH 6, AP-staining.

ITIH4 Antibody (internal region) - Background

The immunizing peptide represents a region of the 35kDa chain. This chain is glycosylated giving rise to an apparent higher molecular weight.

ITIH4 Antibody (internal region) - References

Progenitor/stem cells give rise to liver cancer due to aberrant TGF-beta and IL-6 signaling. Tang Y, Kitisin K, Jogunoori W, Li C, Deng CX, Mueller SC, Resson HW, Rashid A, He AR, Mendelson JS, Jessup JM, Shetty K, Zasloff M, Mishra B, Reddy EP, Johnson L, Mishra L. Proc Natl Acad Sci U S A. 2008 Feb 19;105(7):2445-50. Epub 2008 Feb 8. PMID: 18263735