

CMA1 Antibody (internal region)
Peptide-affinity purified goat antibody
Catalog # AF2833a

Specification

CMA1 Antibody (internal region) - Product Information

Application	WB, IHC
Primary Accession	P23946
Other Accession	NP_001827.1 , 1215
Reactivity	Human
Host	Goat
Clonality	Polyclonal
Concentration	0.5 mg/ml
Isotype	IgG
Calculated MW	27325

CMA1 Antibody (internal region) - Additional Information

Gene ID 1215

Other Names

Chymase, 3.4.21.39, Alpha-chymase, Mast cell protease I, CMA1, CYH, CYM

Format

0.5 mg/ml in Tris saline, 0.02% sodium azide, pH7.3 with 0.5% bovine serum albumin

Storage

Maintain refrigerated at 2-8°C for up to 6 months. For long term storage store at -20°C in small aliquots to prevent freeze-thaw cycles.

Precautions

CMA1 Antibody (internal region) is for research use only and not for use in diagnostic or therapeutic procedures.

CMA1 Antibody (internal region) - Protein Information

Name CMA1

Synonyms CYH, CYM

Function

Major secreted protease of mast cells with suspected roles in vasoactive peptide generation, extracellular matrix degradation, and regulation of gland secretion.

Cellular Location

Secreted. Cytoplasmic granule. Note=Mast cell granules

Tissue Location

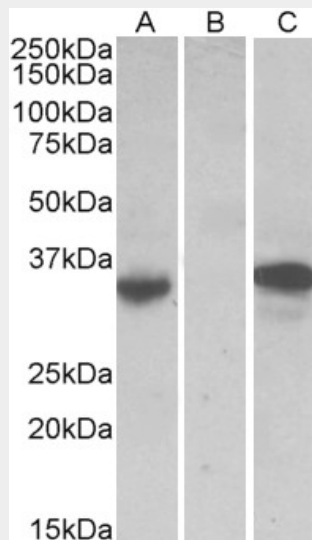
Mast cells in lung, heart, skin and placenta. Expressed in both normal skin and in urticaria pigmentosa lesions

CMA1 Antibody (internal region) - Protocols

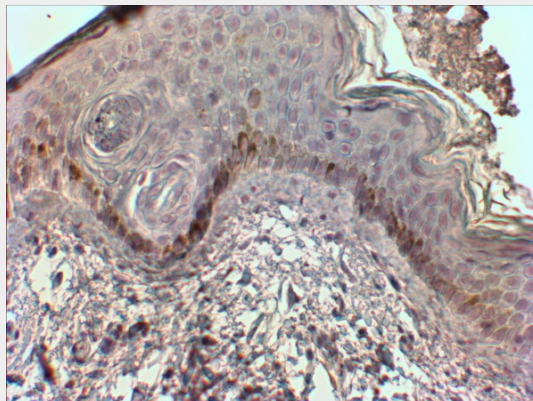
Provided below are standard protocols that you may find useful for product applications.

- [Western Blot](#)
- [Blocking Peptides](#)
- [Dot Blot](#)
- [Immunohistochemistry](#)
- [Immunofluorescence](#)
- [Immunoprecipitation](#)
- [Flow Cytometry](#)
- [Cell Culture](#)

CMA1 Antibody (internal region) - Images



HEK293 lysate (10ug protein in RIPA buffer) over expressing Human CMA1 with DYKDDDDK tag probed with AF2833a (0.5ug/ml) in Lane A and probed with anti- DYKDDDDK Tag (1/3000) in lane C. Mock-transfected HEK293 probed with AF2833a(1mg/ml) in Lane B. Primary incubations were for 1 hour. Detected by chemiluminescence.



AF2833a (2µg/ml) staining of paraffin embedded Human Skin. Steamed antigen retrieval with citrate buffer pH 6, HRP-staining.

CMA1 Antibody (internal region) - References

Activated mast cells induce endothelial cell apoptosis by a combined action of chymase and tumor necrosis factor-alpha Heikkilä HM, Lätti S, Leskinen MJ, Hakala JK, Kovanen PT, Lindstedt KA Arterioscler Thromb Vasc Biol. 2008 Feb;28(2):309-14. Epub 2007 Dec 13 PMID: 18079408