

CRIPTO Antibody (internal region)
Peptide-affinity purified goat antibody
Catalog # AF2772a

Specification

CRIPTO Antibody (internal region) - Product Information

Application	IHC
Primary Accession	P13385
Other Accession	NP_003203.1 , 6997 , 21667 (mouse) , 680246 (rat)
Reactivity	Human
Predicted	Mouse, Rat, Dog
Host	Goat
Clonality	Polyclonal
Concentration	0.5 mg/ml
Isotype	IgG
Calculated MW	21169

CRIPTO Antibody (internal region) - Additional Information

Gene ID 6997

Other Names

Teratocarcinoma-derived growth factor 1, Cripto-1 growth factor, CRGF, Epidermal growth factor-like cripto protein CR1, TDGF1, CRIPTO

Format

0.5 mg/ml in Tris saline, 0.02% sodium azide, pH7.3 with 0.5% bovine serum albumin

Storage

Maintain refrigerated at 2-8°C for up to 6 months. For long term storage store at -20°C in small aliquots to prevent freeze-thaw cycles.

Precautions

CRIPTO Antibody (internal region) is for research use only and not for use in diagnostic or therapeutic procedures.

CRIPTO Antibody (internal region) - Protein Information

Name CRIPTO {ECO:0000303|PubMed:2792079, ECO:0000312|HGNC:HGNC:11701}

Function

GPI-anchored cell membrane protein involved in Nodal signaling. Cell-associated CRIPTO acts as a Nodal coreceptor in cis. Shedding of CRIPTO by TMEM8A modulates Nodal signaling by allowing soluble CRIPTO to act as a Nodal coreceptor on other cells (PubMed:27881714). Could play a role in the determination of the epiblastic cells that subsequently give rise to the mesoderm

(PubMed:11909953).

Cellular Location

Cell membrane; Lipid-anchor, GPI-anchor. Secreted. Note=Released from the cell membrane by GPI cleavage.

Tissue Location

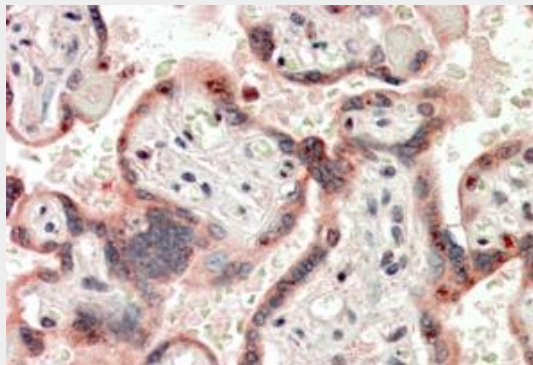
Preferentially expressed in gastric and colorectal carcinomas than in their normal counterparts. Expressed in breast and lung.

CRIPTO Antibody (internal region) - Protocols

Provided below are standard protocols that you may find useful for product applications.

- [Western Blot](#)
- [Blocking Peptides](#)
- [Dot Blot](#)
- [Immunohistochemistry](#)
- [Immunofluorescence](#)
- [Immunoprecipitation](#)
- [Flow Cytometry](#)
- [Cell Culture](#)

CRIPTO Antibody (internal region) - Images



AF2772a (3.8 µg/ml) staining of paraffin embedded Human Placenta. Steamed antigen retrieval with citrate buffer pH 6, AP-staining.

CRIPTO Antibody (internal region) - References

Nodal-dependent Cripto signaling promotes cardiomyogenesis and redirects the neural fate of embryonic stem cells Parisi S, D'Andrea D, Lago CT, Adamson ED, Persico MG, Minchiotti G J Cell Biol. 2003 Oct 27;163(2):303-14 PMID: 14581455