

PHF11 Antibody (internal region)
Peptide-affinity purified goat antibody
Catalog # AF2769a

Specification

PHF11 Antibody (internal region) - Product Information

Application	WB
Primary Accession	O9UIL8
Other Accession	NP_001035533.1 , NP_001035534.1 , 51131
Reactivity	Human
Host	Goat
Clonality	Polyclonal
Concentration	0.5 mg/ml
Isotype	IgG
Calculated MW	37582

PHF11 Antibody (internal region) - Additional Information

Gene ID 51131

Other Names

PHD finger protein 11, BRCA1 C-terminus-associated protein, Renal carcinoma antigen NY-REN-34, PHF11, BCAP

Format

0.5 mg/ml in Tris saline, 0.02% sodium azide, pH7.3 with 0.5% bovine serum albumin

Storage

Maintain refrigerated at 2-8°C for up to 6 months. For long term storage store at -20°C in small aliquots to prevent freeze-thaw cycles.

Precautions

PHF11 Antibody (internal region) is for research use only and not for use in diagnostic or therapeutic procedures.

PHF11 Antibody (internal region) - Protein Information

Name PHF11

Synonyms BCAP

Function

Positive regulator of Th1-type cytokine gene expression.

Cellular Location

Nucleus.

Tissue Location

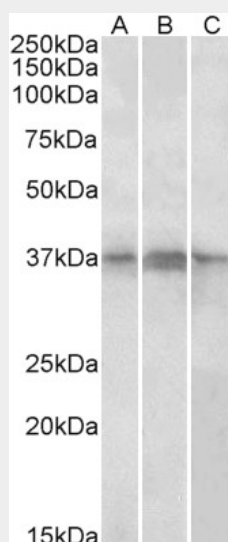
Highly expressed in T and B-cells, as well as natural killer and mature dendritic cells. Expressed at higher levels in Th1 as compared to Th2 cells. Expressed at low levels in all normal tissues tested, including lung, testis, small intestine, breast, liver and placenta.

PHF11 Antibody (internal region) - Protocols

Provided below are standard protocols that you may find useful for product applications.

- [Western Blot](#)
- [Blocking Peptides](#)
- [Dot Blot](#)
- [Immunohistochemistry](#)
- [Immunofluorescence](#)
- [Immunoprecipitation](#)
- [Flow Cytometry](#)
- [Cell Culture](#)

PHF11 Antibody (internal region) - Images



AF2769a (1 µg/ml) staining of Daudi, (A) Jurkat (B) and Jurkat nuclear (C) lysates (35 µg protein in RIPA buffer). Primary incubation was 1 hour. Detected by chemiluminescence

PHF11 Antibody (internal region) - Background

This antibody is expected to recognize both reported isoforms (NP_001035533.1; NP_001035534.1).

PHF11 Antibody (internal region) - References

Positional cloning of a quantitative trait locus on chromosome 13q14 that influences immunoglobulin E levels and asthma Zhang Y, Leaves NI, Anderson GG, Ponting CP, Broxholme J, Holt R, Edser P, Bhattacharyya S, Dunham A, Adcock IM, Pulleyn L, Barnes PJ, Harper JI, Abecasis G, Cardon L, White M, Burton J, Matthews L, Mott R, Ross M, Cox R, Moffatt MF, Cookson WO Nat Genet. 2003 Jun;34(2):181-6 PMID: 12754510