

**GOT2 Antibody (internal region)**  
Peptide-affinity purified goat antibody  
Catalog # AF2722a

### Specification

---

#### GOT2 Antibody (internal region) - Product Information

Application	WB
Primary Accession	<a href="#">P00505</a>
Other Accession	<a href="#">NP_002071.2</a> , <a href="#">2806</a>
Reactivity	Human, Mouse
Predicted	Rat, Pig, Dog
Host	Goat
Clonality	Polyclonal
Concentration	0.5 mg/ml
Isotype	IgG
Calculated MW	47518

#### GOT2 Antibody (internal region) - Additional Information

Gene ID 2806

#### Other Names

Aspartate aminotransferase, mitochondrial, mAspAT, 2.6.1.1, 2.6.1.7, Fatty acid-binding protein, FABP-1, Glutamate oxaloacetate transaminase 2, Kynurenine aminotransferase 4, Kynurenine aminotransferase IV, Kynurenine--oxoglutarate transaminase 4, Kynurenine--oxoglutarate transaminase IV, Plasma membrane-associated fatty acid-binding protein, FABPpm, Transaminase A, GOT2

#### Format

0.5 mg/ml in Tris saline, 0.02% sodium azide, pH7.3 with 0.5% bovine serum albumin

#### Storage

Maintain refrigerated at 2-8°C for up to 6 months. For long term storage store at -20°C in small aliquots to prevent freeze-thaw cycles.

#### Precautions

GOT2 Antibody (internal region) is for research use only and not for use in diagnostic or therapeutic procedures.

#### GOT2 Antibody (internal region) - Protein Information

Name GOT2 ([HGNC:4433](#))

#### Function

Catalyzes the irreversible transamination of the L-tryptophan metabolite L-kynurenine to form kynurenic acid (KA). As a member of the malate-aspartate shuttle, it has a key role in the intracellular NAD(H) redox balance. Is important for metabolite exchange between mitochondria

and cytosol, and for amino acid metabolism. Facilitates cellular uptake of long-chain free fatty acids.

#### Cellular Location

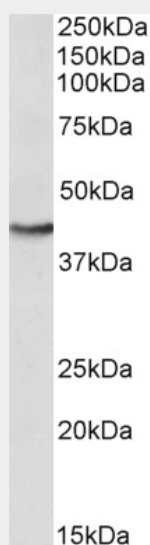
Mitochondrion matrix. Cell membrane. Note=Exposure to alcohol promotes translocation to the cell membrane.

#### GOT2 Antibody (internal region) - Protocols

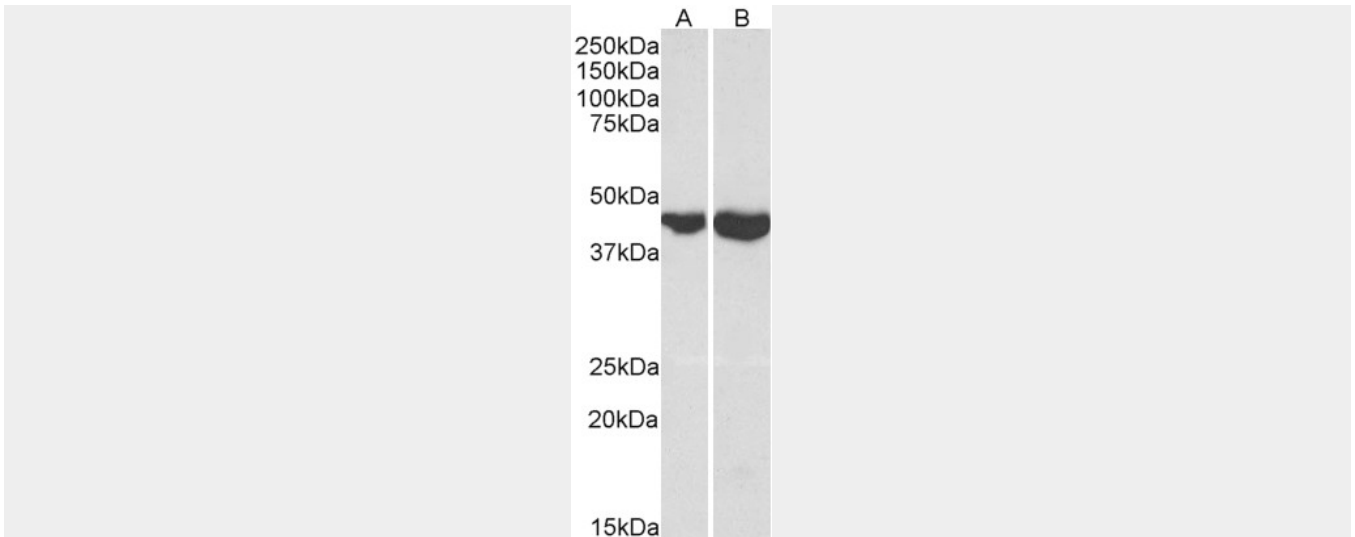
Provided below are standard protocols that you may find useful for product applications.

- [Western Blot](#)
- [Blocking Peptides](#)
- [Dot Blot](#)
- [Immunohistochemistry](#)
- [Immunofluorescence](#)
- [Immunoprecipitation](#)
- [Flow Cytometry](#)
- [Cell Culture](#)

#### GOT2 Antibody (internal region) - Images



AF2722a (0.3  $\mu$ g/ml) staining of HepG2 lysate (35  $\mu$ g protein in RIPA buffer). Primary incubation was 1 hour. Detected by chemiluminescence.



AF2722a (0.1  $\mu\text{g/ml}$ ) staining of Mouse Brain (A) and Heart (B) lysates (35  $\mu\text{g}$  protein in RIPA buffer). Primary incubation was 1 hour. Detected by chemiluminescence.

#### **GOT2 Antibody (internal region) - References**

Nucleotide sequence and tissue distribution of the human mitochondrial aspartate aminotransferase mRNA. Pol S, Bousquet-Lemerrier B, Pave-Preux M, Pawlak A, Nalpas B, Berthelot P, Hanoune J, Barouki R. *Biochem Biophys Res Commun.* 1988 Dec 30;157(3):1309-15. PMID: 3207426