

TMPRSS4 (aa245-57) Antibody (internal region)
Peptide-affinity purified goat antibody
Catalog # AF2690a

Specification

TMPRSS4 (aa245-57) Antibody (internal region) - Product Information

Application	WB
Primary Accession	O9NRS4
Other Accession	NP_063947.1 , NP_001077416.1 , 56649
Reactivity	Human
Host	Goat
Clonality	Polyclonal
Concentration	0.5 mg/ml
Isotype	IgG
Calculated MW	48246

TMPRSS4 (aa245-57) Antibody (internal region) - Additional Information

Gene ID 56649

Other Names

Transmembrane protease serine 4, 3.4.21.-, Channel-activating protease 2, CAPH2, Membrane-type serine protease 2, MT-SP2, TMPRSS4, TMPRSS3

Format

0.5 mg/ml in Tris saline, 0.02% sodium azide, pH7.3 with 0.5% bovine serum albumin

Storage

Maintain refrigerated at 2-8°C for up to 6 months. For long term storage store at -20°C in small aliquots to prevent freeze-thaw cycles.

Precautions

TMPRSS4 (aa245-57) Antibody (internal region) is for research use only and not for use in diagnostic or therapeutic procedures.

TMPRSS4 (aa245-57) Antibody (internal region) - Protein Information

Name TMPRSS4 ([HGNC:11878](#))

Function

Plasma membrane-anchored serine protease that directly induces processing of pro-uPA/PLAU into the active form through proteolytic activity (PubMed:24434139). Seems to be capable of activating ENaC (By similarity).

Cellular Location

Cell membrane; Single-pass type II membrane protein

Tissue Location

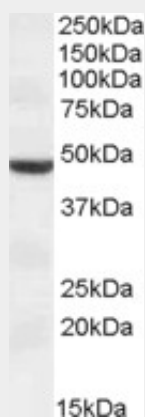
High levels in pancreatic, gastric, colorectal and ampullary cancer. Very weak expression in normal gastrointestinal and urogenital tract (PubMed:10825129). Coexpressed with ACE2 within mature enterocytes (PubMed:32404436).

TMPRSS4 (aa245-57) Antibody (internal region) - Protocols

Provided below are standard protocols that you may find useful for product applications.

- [Western Blot](#)
- [Blocking Peptides](#)
- [Dot Blot](#)
- [Immunohistochemistry](#)
- [Immunofluorescence](#)
- [Immunoprecipitation](#)
- [Flow Cytometry](#)
- [Cell Culture](#)

TMPRSS4 (aa245-57) Antibody (internal region) - Images



AF2690a (1 µg/ml) staining of HEK293 lysate (35 µg protein in RIPA buffer). Primary incubation was 1 hour. Detected by chemiluminescence.

TMPRSS4 (aa245-57) Antibody (internal region) - Background

This antibody is expected to recognise both reported isoforms (NP_063947.1 and NP_001077416.1).

TMPRSS4 (aa245-57) Antibody (internal region) - References

Structural templates predict novel protein interactions and targets from pancreas tumour gene expression data. Dawelbait G, Winter C, Zhang Y, Pilarsky C, Grutzmann R, Heinrich JC, Schroeder M. *Bioinformatics*. 2007 Jul 1;23(13):i115-24. PMID: 17646287