

Phorbolin 1 / APOBEC3A Antibody (internal region)
Peptide-affinity purified goat antibody
Catalog # AF2685a

Specification

Phorbolin 1 / APOBEC3A Antibody (internal region) - Product Information

Application	IHC
Primary Accession	P31941
Other Accession	NP_663745.1 , 200315
Reactivity	Human
Host	Goat
Clonality	Polyclonal
Concentration	0.5 mg/ml
Isotype	IgG
Calculated MW	23012

Phorbolin 1 / APOBEC3A Antibody (internal region) - Additional Information

Gene ID 100913187;200315

Other Names

DNA dC->dU-editing enzyme APOBEC-3A, A3A, 3.5.4.-, Phorbolin-1, APOBEC3A

Format

0.5 mg/ml in Tris saline, 0.02% sodium azide, pH7.3 with 0.5% bovine serum albumin

Storage

Maintain refrigerated at 2-8°C for up to 6 months. For long term storage store at -20°C in small aliquots to prevent freeze-thaw cycles.

Precautions

Phorbolin 1 / APOBEC3A Antibody (internal region) is for research use only and not for use in diagnostic or therapeutic procedures.

Phorbolin 1 / APOBEC3A Antibody (internal region) - Protein Information

Name APOBEC3A

Function

DNA deaminase (cytidine deaminase) with restriction activity against viruses, foreign DNA and mobility of retrotransposons. Exhibits antiviral activity against adeno-associated virus (AAV) and human T- cell leukemia virus type 1 (HTLV-1) and may inhibit the mobility of LTR and non-LTR retrotransposons. Selectively targets single-stranded DNA and can deaminate both methylcytosine and cytosine in foreign DNA. Can induce somatic hypermutation in the nuclear and mitochondrial DNA. May also play a role in the epigenetic regulation of gene expression through the process of active DNA demethylation.

Cellular Location

Nucleus. Cytoplasm.

Tissue Location

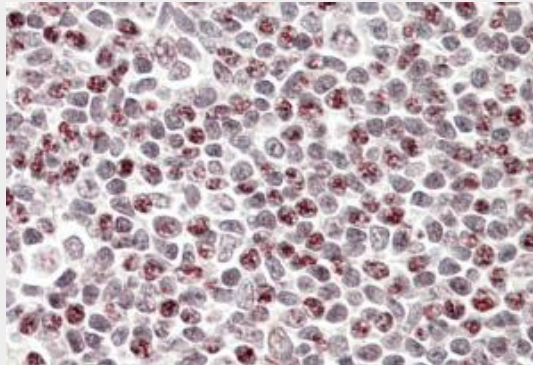
Expressed in peripheral leukocytes with higher expression in CD14-positive phagocytic cells. Highly expressed in keratinocytes and in periphery blood monocytes. Also detected in non-lymphoid tissues including lung and adipose tissues. Found at high levels in colorectal adenocarcinoma, Burkitt's lymphoma and chronic myelogenous leukemia.

Phorbolin 1 / APOBEC3A Antibody (internal region) - Protocols

Provided below are standard protocols that you may find useful for product applications.

- [Western Blot](#)
- [Blocking Peptides](#)
- [Dot Blot](#)
- [Immunohistochemistry](#)
- [Immunofluorescence](#)
- [Immunoprecipitation](#)
- [Flow Cytometry](#)
- [Cell Culture](#)

Phorbolin 1 / APOBEC3A Antibody (internal region) - Images



AF2685a (3.8 µg/ml) staining of paraffin embedded Human Tonsil. Steamed antigen retrieval with citrate buffer pH 6, AP-staining.

Phorbolin 1 / APOBEC3A Antibody (internal region) - References

Targeting APOBEC3A to the viral nucleoprotein complex confers antiviral activity. Goila-Gaur R, Khan MA, Miyagi E, Kao S, Strebel K. *Retrovirology*. 2007 Aug 29;4:61. PMID: 17727729