

NODAL Antibody (internal region)
Peptide-affinity purified goat antibody
Catalog # AF2643a

Specification

NODAL Antibody (internal region) - Product Information

Application	EIA
Primary Accession	O96S42
Other Accession	NP_060525.2 , 4838 , 18119 (mouse)
Reactivity	Human
Predicted	Mouse, Rat
Host	Goat
Clonality	Polyclonal
Concentration	0.5 mg/ml
Isotype	IgG
Calculated MW	39561

NODAL Antibody (internal region) - Additional Information

Gene ID 4838

Other Names

Nodal homolog, NODAL

Format

0.5 mg/ml in Tris saline, 0.02% sodium azide, pH7.3 with 0.5% bovine serum albumin

Storage

Maintain refrigerated at 2-8°C for up to 6 months. For long term storage store at -20°C in small aliquots to prevent freeze-thaw cycles.

Precautions

NODAL Antibody (internal region) is for research use only and not for use in diagnostic or therapeutic procedures.

NODAL Antibody (internal region) - Protein Information

Name NODAL

Function

Essential for mesoderm formation and axial patterning during embryonic development.

Cellular Location

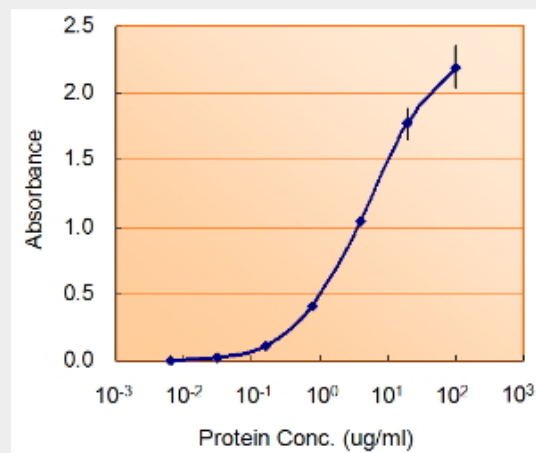
Secreted.

NODAL Antibody (internal region) - Protocols

Provided below are standard protocols that you may find useful for product applications.

- [Western Blot](#)
- [Blocking Peptides](#)
- [Dot Blot](#)
- [Immunohistochemistry](#)
- [Immunofluorescence](#)
- [Immunoprecipitation](#)
- [Flow Cytometry](#)
- [Cell Culture](#)

NODAL Antibody (internal region) - Images



AF2643a (1.5ug/ml) as the reporter with EB002007 as the capture rabbit antibody (5ug/ml).

NODAL Antibody (internal region) - References

Reprogramming metastatic tumour cells with embryonic microenvironments. Hendrix MJ, Seftor EA, Seftor RE, Kasemeier-Kulesa J, Kulesa PM, Postovit LM. Nat Rev Cancer. 2007 Apr;7(4):246-55. Review. PMID: 17384580