

CLEC16A Antibody (internal region)
Peptide-affinity purified goat antibody
Catalog # AF2631a

Specification

CLEC16A Antibody (internal region) - Product Information

| | |
|-------------------|---|
| Application | IF, FC |
| Primary Accession | Q2KHT3 |
| Other Accession | NP_056041.1 , 23274 , 74374 (mouse) |
| Predicted | Human, Mouse, Rat |
| Host | Goat |
| Clonality | Polyclonal |
| Concentration | 0.5 mg/ml |
| Isotype | IgG |
| Calculated MW | 117715 |

CLEC16A Antibody (internal region) - Additional Information

Gene ID 23274

Other Names

Protein CLEC16A, C-type lectin domain family 16 member A {ECO:0000312|HGNC:HGNC:29013}, CLEC16A (HGNC:29013), KIAA0350

Format

0.5 mg/ml in Tris saline, 0.02% sodium azide, pH7.3 with 0.5% bovine serum albumin

Storage

Maintain refrigerated at 2-8°C for up to 6 months. For long term storage store at -20°C in small aliquots to prevent freeze-thaw cycles.

Precautions

CLEC16A Antibody (internal region) is for research use only and not for use in diagnostic or therapeutic procedures.

CLEC16A Antibody (internal region) - Protein Information

Name CLEC16A ([HGNC:29013](#))

Synonyms KIAA0350

Function

Regulator of mitophagy through the upstream regulation of the RNF41/NRDP1-PRKN pathway. Mitophagy is a selective form of autophagy necessary for mitochondrial quality control. The RNF41/NRDP1-PRKN pathway regulates autophagosome-lysosome fusion during late mitophagy. May protect RNF41/NRDP1 from proteasomal degradation, RNF41/NRDP1 which regulates

proteasomal degradation of PRKN. Plays a key role in beta cells functions by regulating mitophagy/autophagy and mitochondrial health.

Cellular Location

Endosome membrane {ECO:0000250|UniProtKB:Q80U30}; Peripheral membrane protein {ECO:0000250|UniProtKB:Q80U30}. Lysosome membrane {ECO:0000250|UniProtKB:Q80U30}; Peripheral membrane protein {ECO:0000250|UniProtKB:Q80U30}. Note=Associates with the endolysosome membrane. {ECO:0000250|UniProtKB:Q80U30}

Tissue Location

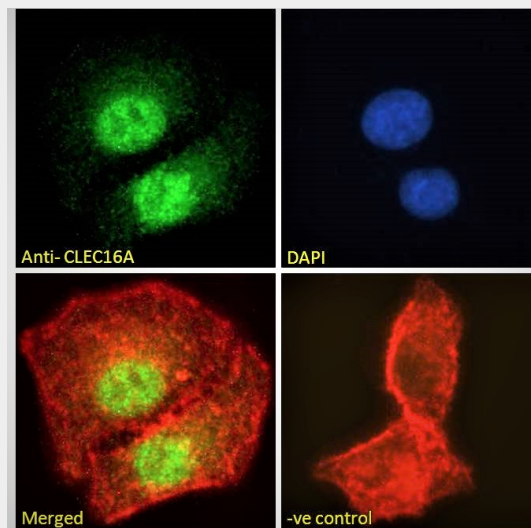
Almost exclusively expressed in immune cells, including dendritic cells, B-lymphocytes and natural killer cells

CLEC16A Antibody (internal region) - Protocols

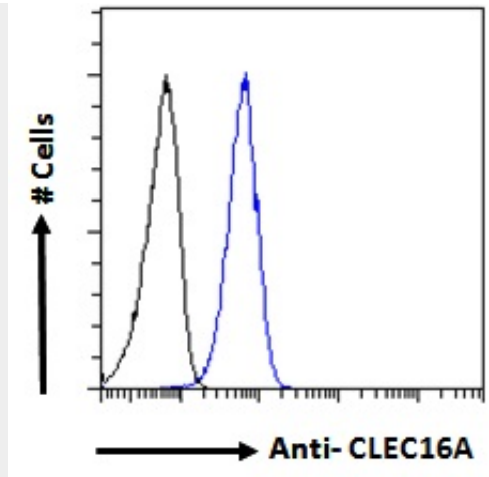
Provided below are standard protocols that you may find useful for product applications.

- [Western Blot](#)
- [Blocking Peptides](#)
- [Dot Blot](#)
- [Immunohistochemistry](#)
- [Immunofluorescence](#)
- [Immunoprecipitation](#)
- [Flow Cytometry](#)
- [Cell Culture](#)

CLEC16A Antibody (internal region) - Images



AF2631a Immunofluorescence analysis of paraformaldehyde fixed A549 cells, permeabilized with 0.15% Triton. Primary incubation 1hr (10ug/ml) followed by Alexa Fluor 488 secondary antibody (2ug/ml), showing strong nuclear and weak cytoplasmic staining. Acti



AF2631a Flow cytometric analysis of paraformaldehyde fixed A549 cells (blue line), permeabilized with 0.5% Triton. Primary incubation 1hr (10ug/ml) followed by Alexa Fluor 488 secondary antibody (1ug/ml). IgG control: Unimmunized goat IgG (black line) fol

CLEC16A Antibody (internal region) - References

A genome-wide association study identifies KIAA0350 as a type 1 diabetes gene. Hakonarson H, Grant SF, Bradfield JP, Marchand L, Kim CE, Glessner JT, Grabs R, Casalunovo T, Taback SP, Frackelton EC, Lawson ML, Robinson LJ, Skraban R, Lu Y, Chiavacci RM, Stanley CA, Kirsch SE, Rappaport EF, Orange JS, Monos DS, Devoto M, Qu HQ, Poly Nature. 2007 Aug 2;448(7153):591-4. Epub 2007 Jul 15. PMID: 17632545