

ABHD4 (aa 177 to 187) Antibody (internal region)
Peptide-affinity purified goat antibody
Catalog # AF2630a

Specification

ABHD4 (aa 177 to 187) Antibody (internal region) - Product Information

Application	IHC
Primary Accession	Q8TB40
Other Accession	NP_071343.2 , 63874 , 105501 (mouse)
Predicted	Human, Mouse, Dog
Host	Goat
Clonality	Polyclonal
Concentration	0.5 mg/ml
Isotype	IgG
Calculated MW	38794

ABHD4 (aa 177 to 187) Antibody (internal region) - Additional Information

Gene ID 63874

Other Names

Abhydrolase domain-containing protein 4, 3.1.1.-, Alpha/beta-hydrolase 4,
Lyso-N-acylphosphatidylethanolamine lipase, ABHD4

Format

0.5 mg/ml in Tris saline, 0.02% sodium azide, pH7.3 with 0.5% bovine serum albumin

Storage

Maintain refrigerated at 2-8°C for up to 6 months. For long term storage store at -20°C in small aliquots to prevent freeze-thaw cycles.

Precautions

ABHD4 (aa 177 to 187) Antibody (internal region) is for research use only and not for use in diagnostic or therapeutic procedures.

ABHD4 (aa 177 to 187) Antibody (internal region) - Protein Information

Name ABHD4 ([HGNC:20154](#))

Function

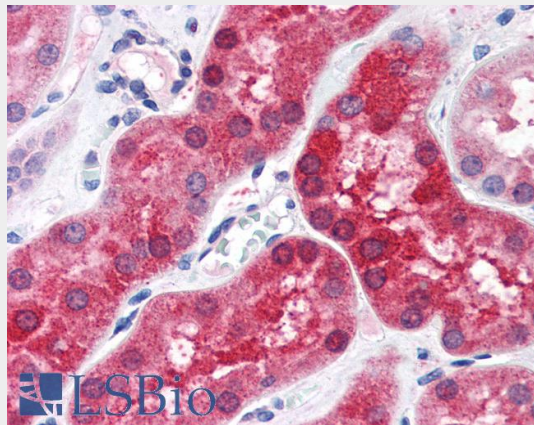
Lysophospholipase selective for N-acyl phosphatidylethanolamine (NAPE). Contributes to the biosynthesis of N-acyl ethanolamines, including the endocannabinoid anandamide by hydrolyzing the sn-1 and sn-2 acyl chains from N-acyl phosphatidylethanolamine (NAPE) generating glycerophospho-N-acyl ethanolamine (GP-NAE), an intermediate for N-acyl ethanolamine biosynthesis. Hydrolyzes substrates bearing saturated, monounsaturated, polyunsaturated N-acyl chains. Shows no significant activity towards other lysophospholipids, including lysophosphatidylcholine, lysophosphatidylethanolamine and lysophosphatidylserine.

ABHD4 (aa 177 to 187) Antibody (internal region) - Protocols

Provided below are standard protocols that you may find useful for product applications.

- [Western Blot](#)
- [Blocking Peptides](#)
- [Dot Blot](#)
- [Immunohistochemistry](#)
- [Immunofluorescence](#)
- [Immunoprecipitation](#)
- [Flow Cytometry](#)
- [Cell Culture](#)

ABHD4 (aa 177 to 187) Antibody (internal region) - Images



AF2640a (3.75 µg/ml) staining of paraffin embedded Human Kidney. Steamed antigen retrieval with citrate buffer pH 6, AP-staining.

ABHD4 (aa 177 to 187) Antibody (internal region) - References

Endocannabinoid biosynthesis proceeding through glycerophospho-N-acyl ethanolamine and a role for alpha/beta-hydrolase 4 in this pathway. Simon GM, Cravatt BF. J Biol Chem. 2006 Sep 8;281(36):26465-72. Epub 2006 Jul 3. PMID: 16818490