

DLL4 Antibody (internal region)
Peptide-affinity purified goat antibody
Catalog # AF2621a

Specification

DLL4 Antibody (internal region) - Product Information

Application	WB
Primary Accession	O9NR61
Other Accession	NP_061947.1 , 54567
Reactivity	Human, Mouse, Rat
Host	Goat
Clonality	Polyclonal
Concentration	0.5 mg/ml
Isotype	IgG
Calculated MW	74605

DLL4 Antibody (internal region) - Additional Information

Gene ID 54567

Other Names

Delta-like protein 4, Drosophila Delta homolog 4, Delta4, DLL4

Format

0.5 mg/ml in Tris saline, 0.02% sodium azide, pH7.3 with 0.5% bovine serum albumin

Storage

Maintain refrigerated at 2-8°C for up to 6 months. For long term storage store at -20°C in small aliquots to prevent freeze-thaw cycles.

Precautions

DLL4 Antibody (internal region) is for research use only and not for use in diagnostic or therapeutic procedures.

DLL4 Antibody (internal region) - Protein Information

Name DLL4

Function

Involved in the Notch signaling pathway as Notch ligand (PubMed:[11134954](http://www.uniprot.org/citations/11134954)). Activates NOTCH1 and NOTCH4. Involved in angiogenesis; negatively regulates endothelial cell proliferation and migration and angiogenic sprouting (PubMed:[20616313](http://www.uniprot.org/citations/20616313)). Essential for retinal progenitor proliferation. Required for suppressing rod fates in late retinal progenitors as well as for proper generation of other retinal cell types (By similarity). During spinal cord neurogenesis, inhibits V2a interneuron fate (PubMed:)

<http://www.uniprot.org/citations/17728344>

Cellular Location

Cell membrane; Single-pass type I membrane protein

Tissue Location

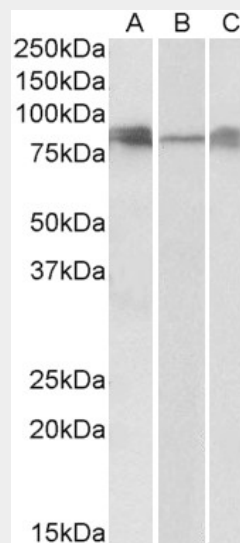
Expressed in vascular endothelium.

DLL4 Antibody (internal region) - Protocols

Provided below are standard protocols that you may find useful for product applications.

- [Western Blot](#)
- [Blocking Peptides](#)
- [Dot Blot](#)
- [Immunohistochemistry](#)
- [Immunofluorescence](#)
- [Immunoprecipitation](#)
- [Flow Cytometry](#)
- [Cell Culture](#)

DLL4 Antibody (internal region) - Images



AF2621a (0.3 µg/ml) staining of Human (A), Mouse(B) and Rat (C) Lung lysates (35 µg protein in RIPA buffer). Primary incubation was 1 hour. Detected by chemiluminescence

DLL4 Antibody (internal region) - Background

Notch signaling

DLL4 Antibody (internal region) - References

Multipotent Drosophila intestinal stem cells specify daughter cell fates by differential notch signaling. Ohlstein B, Spradling A. Science. 2007 Feb 16;315(5814):988-92. PMID: 17303754