

Septin 1 / SEPT1 Antibody (internal region)
Peptide-affinity purified goat antibody
Catalog # AF2532a

Specification

Septin 1 / SEPT1 Antibody (internal region) - Product Information

Application	WB
Primary Accession	Q8WYJ6
Other Accession	NP_443070.1 , 1731 , 54204 (mouse) , 293507 (rat)
Predicted Host	Human, Mouse, Rat, Dog
Clonality	Goat
Concentration	Polyclonal
Isotype	0.5 mg/ml
Calculated MW	IgG
	42386

Septin 1 / SEPT1 Antibody (internal region) - Additional Information

Gene ID 1731

Other Names

Septin-1, LARP, Peanut-like protein 3, Serologically defined breast cancer antigen NY-BR-24, SEPT1, DIFF6, PNUTL3

Format

0.5 mg/ml in Tris saline, 0.02% sodium azide, pH7.3 with 0.5% bovine serum albumin

Storage

Maintain refrigerated at 2-8°C for up to 6 months. For long term storage store at -20°C in small aliquots to prevent freeze-thaw cycles.

Precautions

Septin 1 / SEPT1 Antibody (internal region) is for research use only and not for use in diagnostic or therapeutic procedures.

Septin 1 / SEPT1 Antibody (internal region) - Protein Information

Name SEPTIN1 ([HGNC:2879](#))

Synonyms DIFF6, PNUTL3, SEPT1

Function

Filament-forming cytoskeletal GTPase (By similarity). May play a role in cytokinesis (Potential).

Cellular Location

Cytoplasm. Cytoplasm, cytoskeleton. Cytoplasm, cytoskeleton, microtubule organizing center,

centrosome. Midbody. Note=Remains at the centrosomes and the nearby microtubules throughout mitosis. Localizes to the midbody during cytokinesis

Tissue Location

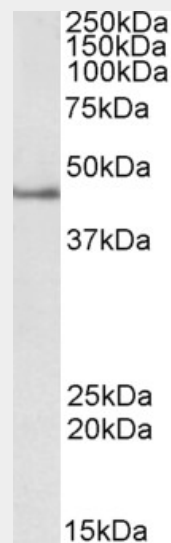
Expressed at high levels in lymphoid and hematopoietic tissues.

Septin 1 / SEPT1 Antibody (internal region) - Protocols

Provided below are standard protocols that you may find useful for product applications.

- [Western Blot](#)
- [Blocking Peptides](#)
- [Dot Blot](#)
- [Immunohistochemistry](#)
- [Immunofluorescence](#)
- [Immunoprecipitation](#)
- [Flow Cytometry](#)
- [Cell Culture](#)

Septin 1 / SEPT1 Antibody (internal region) - Images



AF2532a (2 µg/ml) staining of Jurkat lysate (35 µg protein in RIPA buffer). Primary incubation was 1 hour. Detected by chemiluminescence.

Septin 1 / SEPT1 Antibody (internal region) - References

Septin1, a new interaction partner for human serine/threonine kinase aurora-B. Qi M, Yu W, Liu S, Jia H, Tang L, Shen M, Yan X, Saiyin H, Lang Q, Wan B, Zhao S, Yu L. Biochem Biophys Res Commun. 2005 Oct 28;336(3):994-1000. PMID: 16179162