

Prealbumin / Transthyretin Antibody (internal region)
Peptide-affinity purified goat antibody
Catalog # AF2515a

Specification

Prealbumin / Transthyretin Antibody (internal region) - Product Information

Application	EIA, IHC
Primary Accession	P02766
Other Accession	NP_000362.1 , 7276 , 22139 (mouse) , 24856 (rat)
Reactivity	Human
Predicted	Mouse, Rat, Dog
Host	Goat
Clonality	Polyclonal
Concentration	0.5 mg/ml
Isotype	IgG
Calculated MW	15887

Prealbumin / Transthyretin Antibody (internal region) - Additional Information

Gene ID 7276

Other Names

Transthyretin, ATTR, Prealbumin, TBPA, TTR, PALB

Format

0.5 mg/ml in Tris saline, 0.02% sodium azide, pH7.3 with 0.5% bovine serum albumin

Storage

Maintain refrigerated at 2-8°C for up to 6 months. For long term storage store at -20°C in small aliquots to prevent freeze-thaw cycles.

Precautions

Prealbumin / Transthyretin Antibody (internal region) is for research use only and not for use in diagnostic or therapeutic procedures.

Prealbumin / Transthyretin Antibody (internal region) - Protein Information

Name TTR

Synonyms PALB

Function

Thyroid hormone-binding protein. Probably transports thyroxine from the bloodstream to the brain.

Cellular Location

Secreted. Cytoplasm.

Tissue Location

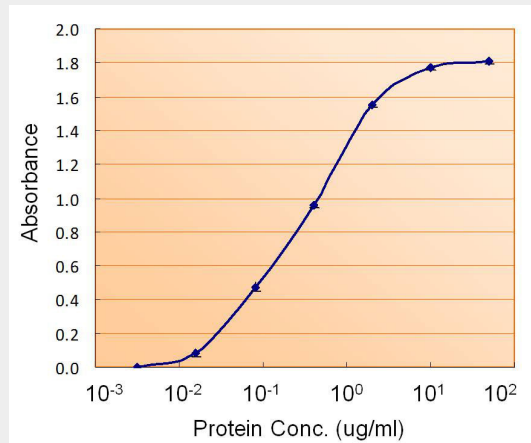
Detected in serum and cerebrospinal fluid (at protein level). Highly expressed in choroid plexus epithelial cells Detected in retina pigment epithelium and liver

Prealbumin / Transthyretin Antibody (internal region) - Protocols

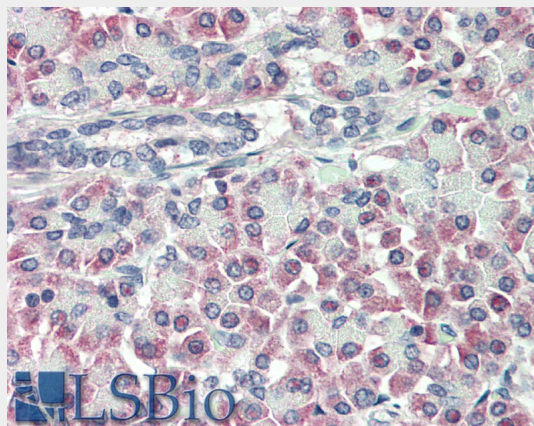
Provided below are standard protocols that you may find useful for product applications.

- [Western Blot](#)
- [Blocking Peptides](#)
- [Dot Blot](#)
- [Immunohistochemistry](#)
- [Immunofluorescence](#)
- [Immunoprecipitation](#)
- [Flow Cytometry](#)
- [Cell Culture](#)

Prealbumin / Transthyretin Antibody (internal region) - Images



AF2515a (5ug/ml) as the reporter with EB002019 as the capture rabbit antibody (5ug/ml).



AF2515a (10µg/ml) staining of paraffin embedded Human Pancreas. Steamed antigen retrieval with citrate buffer pH 6, AP-staining.

Prealbumin / Transthyretin Antibody (internal region) - References

The biological and chemical basis for tissue-selective amyloid disease. Sekijima Y, Wiseman RL,

Matteson J, Hammarstrom P, Miller SR, Sawkar AR, Balch WE, Kelly JW. Cell. 2005 Apr 8;121(1):73-85. PMID: 15820680