

Tryptophan hydroxylase 2 / TPH2 Antibody (internal region)
Peptide-affinity purified goat antibody
Catalog # AF2480a

Specification

Tryptophan hydroxylase 2 / TPH2 Antibody (internal region) - Product Information

Application	IHC, IF, FC
Primary Accession	Q8IWU9
Other Accession	NP_775489.2 , 121278
Reactivity	Human
Predicted	Pig, Dog
Host	Goat
Clonality	Polyclonal
Concentration	0.5 mg/ml
Isotype	IgG
Calculated MW	56057

Tryptophan hydroxylase 2 / TPH2 Antibody (internal region) - Additional Information

Gene ID 121278

Other Names

Tryptophan 5-hydroxylase 2, 1.14.16.4, Neuronal tryptophan hydroxylase, Tryptophan 5-monoxygenase 2, TPH2, NTPH

Format

0.5 mg/ml in Tris saline, 0.02% sodium azide, pH7.3 with 0.5% bovine serum albumin

Storage

Maintain refrigerated at 2-8°C for up to 6 months. For long term storage store at -20°C in small aliquots to prevent freeze-thaw cycles.

Precautions

Tryptophan hydroxylase 2 / TPH2 Antibody (internal region) is for research use only and not for use in diagnostic or therapeutic procedures.

Tryptophan hydroxylase 2 / TPH2 Antibody (internal region) - Protein Information

Name TPH2

Synonyms NTPH

Tissue Location

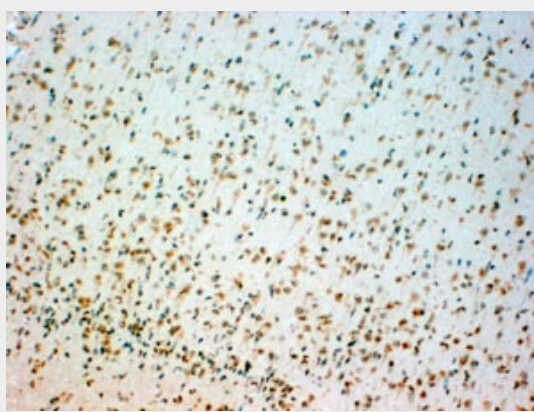
Brain specific.

Tryptophan hydroxylase 2 / TPH2 Antibody (internal region) - Protocols

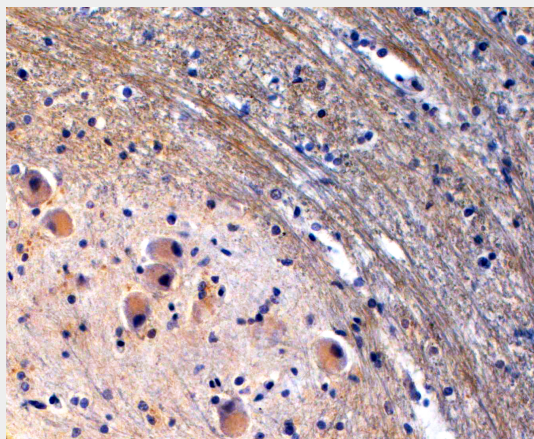
Provided below are standard protocols that you may find useful for product applications.

- [Western Blot](#)
- [Blocking Peptides](#)
- [Dot Blot](#)
- [Immunohistochemistry](#)
- [Immunofluorescence](#)
- [Immunoprecipitation](#)
- [Flow Cytometry](#)
- [Cell Culture](#)

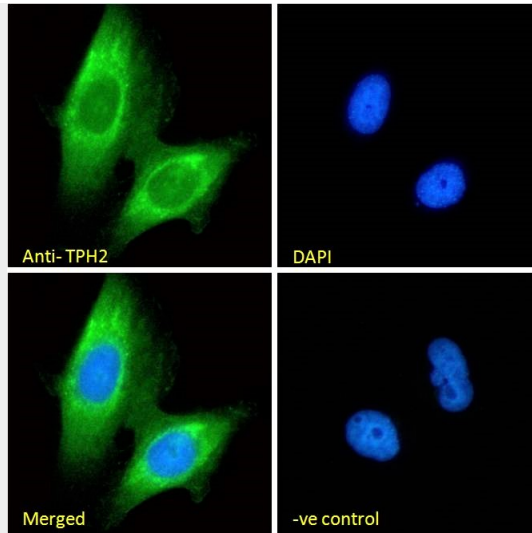
Tryptophan hydroxylase 2 / TPH2 Antibody (internal region) - Images



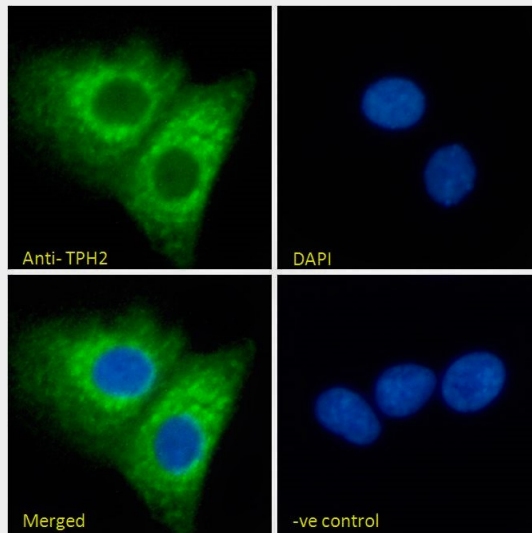
AF2480a (4 µg/ml) staining of paraffin embedded Human Brain Stem. Steamed antigen retrieval with citrate buffer pH 6, HRP-staining.



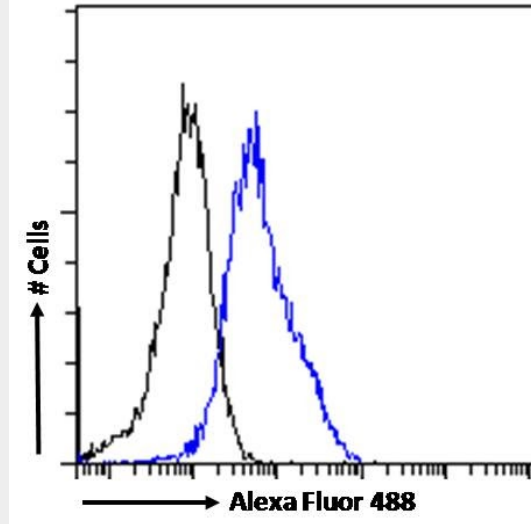
EB07050 (2 µg/ml) staining of paraffin embedded Human Brain Stem. Steamed antigen retrieval with citrate buffer pH 6, HRP-staining.



EB07050 Immunofluorescence analysis of paraformaldehyde fixed U251 cells, permeabilized with 0.15% Triton. Primary incubation 1hr (10ug/ml) followed by Alexa Fluor 488 secondary antibody (2ug/ml), showing cytoplasmic staining. The nuclear stain is DAPI (b



EB07050 Immunofluorescence analysis of paraformaldehyde fixed A549 cells, permeabilized with 0.15% Triton. Primary incubation 1hr (10ug/ml) followed by Alexa Fluor 488 secondary antibody (2ug/ml), showing cytoplasmic staining. The nuclear stain is DAPI (b



EB07050 Flow cytometric analysis of paraformaldehyde fixed U251 cells (blue line), permeabilized with 0.5% Triton. Primary incubation 1hr (10ug/ml) followed by Alexa Fluor 488 secondary antibody (1ug/ml). IgG control: Unimmunized goat IgG (black line) fol

Tryptophan hydroxylase 2 / TPH2 Antibody (internal region) - References

Haplotype-based linkage of tryptophan hydroxylase 2 to suicide attempt, major depression, and cerebrospinal fluid 5-hydroxyindoleacetic acid in 4 populations. Zhou Z, Roy A, Lipsky R, Kuchipudi K, Zhu G, Taubman J, Enoch MA, Virkkunen M, Goldman D. Arch Gen Psychiatry. 2005 Oct;62(10):1109-18. PMID: 16203956