

NOTCH3 Antibody (C-Term)
Peptide-affinity purified goat antibody
Catalog # AF2474a

Specification

NOTCH3 Antibody (C-Term) - Product Information

Application	IHC
Primary Accession	O9UM47
Other Accession	NP_000426.2 , 4854
Predicted	Human, Mouse, Rat
Host	Goat
Clonality	Polyclonal
Concentration	0.5 mg/ml
Isotype	IgG
Calculated MW	243631

NOTCH3 Antibody (C-Term) - Additional Information

Gene ID 4854

Other Names

Neurogenic locus notch homolog protein 3, Notch 3, Notch 3 extracellular truncation, Notch 3 intracellular domain, NOTCH3

Format

0.5 mg/ml in Tris saline, 0.02% sodium azide, pH7.3 with 0.5% bovine serum albumin

Storage

Maintain refrigerated at 2-8°C for up to 6 months. For long term storage store at -20°C in small aliquots to prevent freeze-thaw cycles.

Precautions

NOTCH3 Antibody (C-Term) is for research use only and not for use in diagnostic or therapeutic procedures.

NOTCH3 Antibody (C-Term) - Protein Information

Name NOTCH3

Function

Functions as a receptor for membrane-bound ligands Jagged1, Jagged2 and Delta1 to regulate cell-fate determination (PubMed:15350543). Upon ligand activation through the released notch intracellular domain (NICD) it forms a transcriptional activator complex with RBPJ/RBPSUH and activates genes of the enhancer of split locus. Affects the implementation of differentiation, proliferation and apoptotic programs (By similarity).

Cellular Location

Cell membrane; Single-pass type I membrane protein

Tissue Location

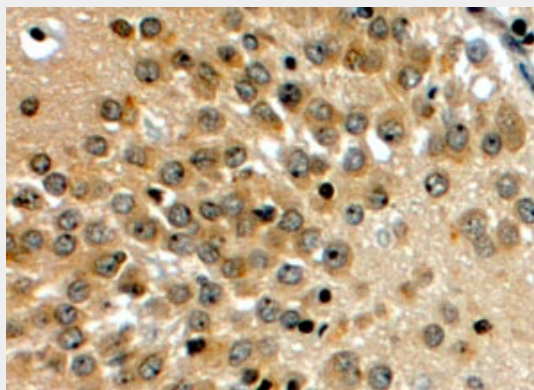
Ubiquitously expressed in fetal and adult tissues.

NOTCH3 Antibody (C-Term) - Protocols

Provided below are standard protocols that you may find useful for product applications.

- [Western Blot](#)
- [Blocking Peptides](#)
- [Dot Blot](#)
- [Immunohistochemistry](#)
- [Immunofluorescence](#)
- [Immunoprecipitation](#)
- [Flow Cytometry](#)
- [Cell Culture](#)

NOTCH3 Antibody (C-Term) - Images



AF2474a (4 µg/ml) staining of paraffin embedded Human Hippocampus. Steamed antigen retrieval with citrate buffer pH 6, HRP-staining.

NOTCH3 Antibody (C-Term) - References

Notch3 signaling initiates choroid plexus tumor formation. Dang L, Fan X, Chaudhry A, Wang M, Gaiano N, Eberhart CG. *Oncogene*. 2005 Sep 26; [Epub ahead of print] PMID: 16186803