

PTCH (C Terminus) Antibody (C-Term)
Peptide-affinity purified goat antibody
Catalog # AF2472a

Specification

PTCH (C Terminus) Antibody (C-Term) - Product Information

Application	IHC
Primary Accession	Q13635
Other Accession	NP_000255.1 , NP_001077072.1 , NP_001077071.1 , NP_001077073.1 , NP_001077074.1 , NP_001077075.1 , NP_001077076.1 , 5727
Reactivity	Human
Predicted	Mouse, Rat
Host	Goat
Clonality	Polyclonal
Concentration	0.5 mg/ml
Isotype	IgG
Calculated MW	160545

PTCH (C Terminus) Antibody (C-Term) - Additional Information

Gene ID 5727

Other Names

Protein patched homolog 1, PTC, PTC1, PTCH1, PTCH

Format

0.5 mg/ml in Tris saline, 0.02% sodium azide, pH7.3 with 0.5% bovine serum albumin

Storage

Maintain refrigerated at 2-8°C for up to 6 months. For long term storage store at -20°C in small aliquots to prevent freeze-thaw cycles.

Precautions

PTCH (C Terminus) Antibody (C-Term) is for research use only and not for use in diagnostic or therapeutic procedures.

PTCH (C Terminus) Antibody (C-Term) - Protein Information

Name PTCH1

Synonyms PTCH

Function

Acts as a receptor for sonic hedgehog (SHH), indian hedgehog (IHH) and desert hedgehog (DHH). Associates with the smoothed protein (SMO) to transduce the hedgehog's proteins signal.

Seems to have a tumor suppressor function, as inactivation of this protein is probably a necessary, if not sufficient step for tumorigenesis.

Cellular Location

Cell membrane {ECO:0000250|UniProtKB:Q61115}; Multi-pass membrane protein

Tissue Location

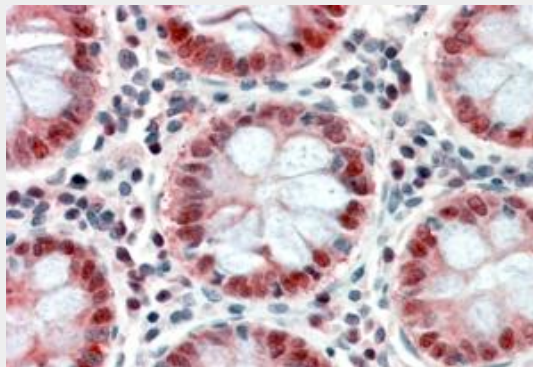
In the adult, expressed in brain, lung, liver, heart, placenta, skeletal muscle, pancreas and kidney. Expressed in tumor cells but not in normal skin

PTCH (C Terminus) Antibody (C-Term) - Protocols

Provided below are standard protocols that you may find useful for product applications.

- [Western Blot](#)
- [Blocking Peptides](#)
- [Dot Blot](#)
- [Immunohistochemistry](#)
- [Immunofluorescence](#)
- [Immunoprecipitation](#)
- [Flow Cytometry](#)
- [Cell Culture](#)

PTCH (C Terminus) Antibody (C-Term) - Images



AF2472a (3.8 µg/ml) staining of paraffin embedded Human Colon. Steamed antigen retrieval with citrate buffer pH 6, AP-staining.

PTCH (C Terminus) Antibody (C-Term) - Background

This antibody is expected to recognise all reported isoforms. Variants (NP_001077073.1; NP_001077074.1; NP_001077075.1; NP_001077076.1) encode the same isoform.

PTCH (C Terminus) Antibody (C-Term) - References

Detecting tissue-specific alternative splicing and disease-associated aberrant splicing of the PTCH gene with exon junction microarrays. Nagao K, Togawa N, Fujii K, Uchikawa H, Kohno Y, Yamada M, Miyashita T. Hum Mol Genet. 2005 Oct 3; [Epub ahead of print] PMID: 16203740