

NHERF2 (isoform b, e) Antibody (internal region)
Peptide-affinity purified goat antibody
Catalog # AF2461a

Specification

NHERF2 (isoform b, e) Antibody (internal region) - Product Information

Application	WB
Primary Accession	Q15599
Other Accession	NP_004776.3 , NP_001239005.1 , 9351
Reactivity	Human
Host	Goat
Clonality	Polyclonal
Concentration	0.5 mg/ml
Isotype	IgG
Calculated MW	37414

NHERF2 (isoform b, e) Antibody (internal region) - Additional Information

Gene ID 9351

Other Names

Na(+)/H(+) exchange regulatory cofactor NHE-RF2, NHERF-2, NHE3 kinase A regulatory protein E3KARP, SRY-interacting protein 1, SIP-1, Sodium-hydrogen exchanger regulatory factor 2, Solute carrier family 9 isoform A3 regulatory factor 2, Tyrosine kinase activator protein 1, TKA-1, SLC9A3R2, NHERF2

Format

0.5 mg/ml in Tris saline, 0.02% sodium azide, pH7.3 with 0.5% bovine serum albumin

Storage

Maintain refrigerated at 2-8°C for up to 6 months. For long term storage store at -20°C in small aliquots to prevent freeze-thaw cycles.

Precautions

NHERF2 (isoform b, e) Antibody (internal region) is for research use only and not for use in diagnostic or therapeutic procedures.

NHERF2 (isoform b, e) Antibody (internal region) - Protein Information

Name NHERF2 ([HGNC:11076](#))

Synonyms SLC9A3R2

Function

Scaffold protein that connects plasma membrane proteins with members of the ezrin/moesin/radixin family and thereby helps to link them to the actin cytoskeleton and to regulate their surface expression. Necessary for cAMP-mediated phosphorylation and inhibition of

SLC9A3 (PubMed:18829453). May also act as scaffold protein in the nucleus.

Cellular Location

Endomembrane system; Peripheral membrane protein. Nucleus. Apical cell membrane
Note=Localizes with EZR and PODXL at the apical cell membrane of glomerular epithelium cells and the sides of the food processes (By similarity). Nuclear, in a punctate pattern.

Tissue Location

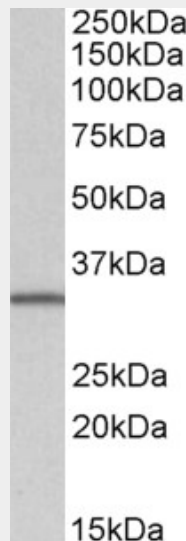
Widely expressed.

NHERF2 (isoform b, e) Antibody (internal region) - Protocols

Provided below are standard protocols that you may find useful for product applications.

- [Western Blot](#)
- [Blocking Peptides](#)
- [Dot Blot](#)
- [Immunohistochemistry](#)
- [Immunofluorescence](#)
- [Immunoprecipitation](#)
- [Flow Cytometry](#)
- [Cell Culture](#)

NHERF2 (isoform b, e) Antibody (internal region) - Images



AF2461a (1 µg/ml) staining of Daudi lysate (35 µg protein in RIPA buffer). Primary incubation was 1 hour. Detected by chemiluminescence.

NHERF2 (isoform b, e) Antibody (internal region) - Background

This antibody is expected to recognize isoforms b and e (NP_004776.3 and NP_001239005.1) only.

NHERF2 (isoform b, e) Antibody (internal region) - References

cGMP inhibition of Na⁺/H⁺ antiporter 3 (NHE3) requires PDZ domain adapter NHERF2, a broad specificity protein kinase G-anchoring protein. Cha B, Kim JH, Hut H, Hogema BM, Nadarja J, Zizak

M, Cavet M, Lee-Kwon W, Lohmann SM, Smolenski A, Tse CM, Yun C, de Jonge HR, Donowitz M. J Biol Chem. 2005 Apr 29;280(17):16642-50. Epub 2005 Feb 18. PMID: 15722341