

CFC1 / Cripto-1 Antibody (internal region)
Peptide-affinity purified goat antibody
Catalog # AF2452a

Specification

CFC1 / Cripto-1 Antibody (internal region) - Product Information

Application	IHC
Primary Accession	POCG37
Other Accession	NP_115934.1 , 55997
Reactivity	Mouse
Predicted	Human, Rat
Host	Goat
Clonality	Polyclonal
Concentration	0.5 mg/ml
Isotype	IgG
Calculated MW	24612

CFC1 / Cripto-1 Antibody (internal region) - Additional Information

Gene ID 55997

Other Names

Cryptic protein, Cryptic family protein 1, CFC1

Format

0.5 mg/ml in Tris saline, 0.02% sodium azide, pH7.3 with 0.5% bovine serum albumin

Storage

Maintain refrigerated at 2-8°C for up to 6 months. For long term storage store at -20°C in small aliquots to prevent freeze-thaw cycles.

Precautions

CFC1 / Cripto-1 Antibody (internal region) is for research use only and not for use in diagnostic or therapeutic procedures.

CFC1 / Cripto-1 Antibody (internal region) - Protein Information

Name CFC1

Function

NODAL coreceptor involved in the correct establishment of the left-right axis. May play a role in mesoderm and/or neural patterning during gastrulation.

Cellular Location

Cell membrane; Lipid-anchor, GPI-anchor. Secreted. Note=Does not exhibit a typical GPI- signal sequence. The C-ter hydrophilic extension of the GPI-signal sequence reduces the efficiency of processing and could lead to the production of an secreted unprocessed form. This extension is

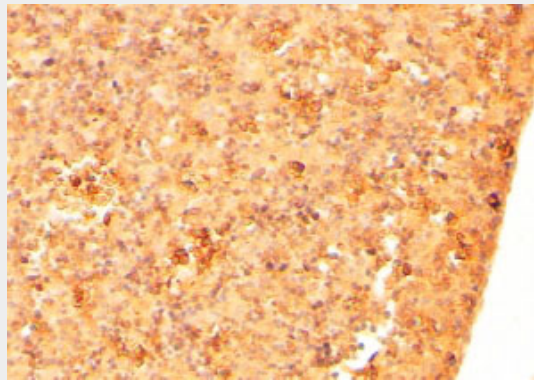
found only in primates

CFC1 / Cripto-1 Antibody (internal region) - Protocols

Provided below are standard protocols that you may find useful for product applications.

- [Western Blot](#)
- [Blocking Peptides](#)
- [Dot Blot](#)
- [Immunohistochemistry](#)
- [Immunofluorescence](#)
- [Immunoprecipitation](#)
- [Flow Cytometry](#)
- [Cell Culture](#)

CFC1 / Cripto-1 Antibody (internal region) - Images



AF2452a (2 µg/ml) staining of paraffin embedded Mouse Embryo Liver. Steamed antigen retrieval with citrate buffer pH 6, HRP-staining.

CFC1 / Cripto-1 Antibody (internal region) - References

Role of human cripto-1 in tumor angiogenesis. Bianco C, Strizzi L, Ebert A, Chang C, Rehman A, Normanno N, Guedez L, Salloum R, Ginsburg E, Sun Y, Khan N, Hirota M, Wallace-Jones B, Wechselberger C, Vonderhaar BK, Tosato G, Stetler-Stevenson WG, Sanicola M, Salomon DS. *J Natl Cancer Inst.* 2005 Jan 19;97(2):132-41. PMID: 15657343