

MMP9 Antibody (internal region)
Peptide-affinity purified goat antibody
Catalog # AF2451a

Specification

MMP9 Antibody (internal region) - Product Information

Application	WB
Primary Accession	P14780
Other Accession	NP_004985.2 , 4318
Reactivity	Human
Host	Goat
Clonality	Polyclonal
Concentration	0.5 mg/ml
Isotype	IgG
Calculated MW	78458

MMP9 Antibody (internal region) - Additional Information

Gene ID 4318

Other Names

Matrix metalloproteinase-9, MMP-9, 3.4.24.35, 92 kDa gelatinase, 92 kDa type IV collagenase, Gelatinase B, GELB, 67 kDa matrix metalloproteinase-9, 82 kDa matrix metalloproteinase-9, MMP9, CLG4B

Format

0.5 mg/ml in Tris saline, 0.02% sodium azide, pH7.3 with 0.5% bovine serum albumin

Storage

Maintain refrigerated at 2-8°C for up to 6 months. For long term storage store at -20°C in small aliquots to prevent freeze-thaw cycles.

Precautions

MMP9 Antibody (internal region) is for research use only and not for use in diagnostic or therapeutic procedures.

MMP9 Antibody (internal region) - Protein Information

Name MMP9

Synonyms CLG4B

Function

Matrix metalloproteinase that plays an essential role in local proteolysis of the extracellular matrix and in leukocyte migration (PubMed: [12879005](http://www.uniprot.org/citations/12879005), PubMed: [1480034](http://www.uniprot.org/citations/1480034), PubMed: [2551898](http://www.uniprot.org/citations/2551898))

target="_blank">2551898). Could play a role in bone osteoclastic resorption (By similarity). Cleaves KiSS1 at a Gly-I-Leu bond (PubMed:12879005). Cleaves NINJ1 to generate the Secreted ninjurin-1 form (PubMed:32883094). Cleaves type IV and type V collagen into large C-terminal three quarter fragments and shorter N-terminal one quarter fragments (PubMed:1480034). Degrades fibronectin but not laminin or Pz-peptide.

Cellular Location

Secreted, extracellular space, extracellular matrix

Tissue Location

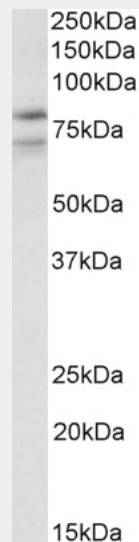
Detected in neutrophils (at protein level) (PubMed:7683678). Produced by normal alveolar macrophages and granulocytes.

MMP9 Antibody (internal region) - Protocols

Provided below are standard protocols that you may find useful for product applications.

- [Western Blot](#)
- [Blocking Peptides](#)
- [Dot Blot](#)
- [Immunohistochemistry](#)
- [Immunofluorescence](#)
- [Immunoprecipitation](#)
- [Flow Cytometry](#)
- [Cell Culture](#)

MMP9 Antibody (internal region) - Images



AF2451a (1 µg/ml) staining of Peripheral Blood Lymphocytes lysate (35 µg protein in RIPA buffer). Primary incubation was 1 hour. Detected by chemiluminescence.

MMP9 Antibody (internal region) - References

Expression of matrix metalloproteinases in vasculitic neuropathy. Gurer G, Erdem S, Kocafe C, Ozguc M, Tan E. Rheumatol Int. 2004 Sep;24(5):255-9. Epub 2003 Nov 04. PMID: 14598179