

**CTDSP1 Antibody (internal region)**  
Peptide-affinity purified goat antibody  
Catalog # AF2446a

**Specification**

---

**CTDSP1 Antibody (internal region) - Product Information**

Application	WB, IHC
Primary Accession	<a href="#">O9GZU7</a>
Other Accession	<a href="#">NP_067021.1</a> , <a href="#">NP_872580.1</a> , <a href="#">58190</a>
Reactivity	Human, Mouse
Predicted	Rat, Dog
Host	Goat
Clonality	Polyclonal
Concentration	0.5 mg/ml
Isotype	IgG
Calculated MW	29203

**CTDSP1 Antibody (internal region) - Additional Information**

Gene ID 58190

**Other Names**

Carboxy-terminal domain RNA polymerase II polypeptide A small phosphatase 1, 3.1.3.16, Nuclear LIM interactor-interacting factor 3, NLI-IF, NLI-interacting factor 3, Small C-terminal domain phosphatase 1, SCP1, Small CTD phosphatase 1, CTDSP1, NIF3, NLIIF, SCP1

**Format**

0.5 mg/ml in Tris saline, 0.02% sodium azide, pH7.3 with 0.5% bovine serum albumin

**Storage**

Maintain refrigerated at 2-8°C for up to 6 months. For long term storage store at -20°C in small aliquots to prevent freeze-thaw cycles.

**Precautions**

CTDSP1 Antibody (internal region) is for research use only and not for use in diagnostic or therapeutic procedures.

**CTDSP1 Antibody (internal region) - Protein Information**

**Name** CTDSP1

**Synonyms** NIF3, NLIIF, SCP1

**Function**

Preferentially catalyzes the dephosphorylation of 'Ser-5' within the tandem 7 residue repeats in the C-terminal domain (CTD) of the largest RNA polymerase II subunit POLR2A. Negatively regulates RNA polymerase II transcription, possibly by controlling the transition from

initiation/capping to processive transcript elongation. Recruited by REST to neuronal genes that contain RE-1 elements, leading to neuronal gene silencing in non-neuronal cells.

#### Cellular Location

Nucleus. Note=Colocalizes with RNA polymerase II

#### Tissue Location

Expression is restricted to non-neuronal tissues. Highest expression in skeletal muscle, spleen, lung and placenta

### CTDSP1 Antibody (internal region) - Protocols

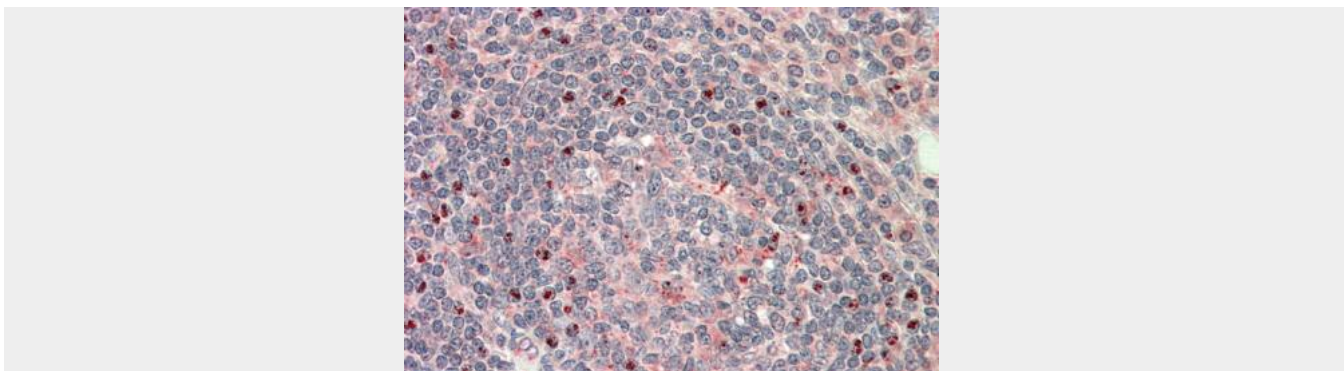
Provided below are standard protocols that you may find useful for product applications.

- [Western Blot](#)
- [Blocking Peptides](#)
- [Dot Blot](#)
- [Immunohistochemistry](#)
- [Immunofluorescence](#)
- [Immunoprecipitation](#)
- [Flow Cytometry](#)
- [Cell Culture](#)

### CTDSP1 Antibody (internal region) - Images



AF2446a (0.1 µg/ml) staining of Mouse Testis lysate (35 µg protein in RIPA buffer). Primary incubation was 1 hour. Detected by chemiluminescence.



AF2446a (5 µg/ml) staining of paraffin embedded Human Tonsil. Steamed antigen retrieval with citrate buffer pH 6, AP-staining.

#### **CTDSP1 Antibody (internal region) - Background**

This antibody is expected to recognise both reported isoforms (NP\_067021 and NP\_872580)

#### **CTDSP1 Antibody (internal region) - References**

Small CTD phosphatases function in silencing neuronal gene expression. Yeo M, Lee SK, Lee B, Ruiz EC, Pfaff SL, Gill GN. Science. 2005 Jan 28;307(5709):596-600. PMID: 15681389