

**Activin receptor-like kinase 1 Antibody (C-Term)**  
Peptide-affinity purified goat antibody  
Catalog # AF2396a

**Specification**

---

**Activin receptor-like kinase 1 Antibody (C-Term) - Product Information**

Application	WB
Primary Accession	<a href="#">P37023</a>
Other Accession	<a href="#">NP_000011.2</a> , <a href="#">NP_001070869.1</a> , <a href="#">94</a>
Reactivity	Human
Host	Goat
Clonality	Polyclonal
Concentration	0.5 mg/ml
Isotype	IgG
Calculated MW	56124

**Activin receptor-like kinase 1 Antibody (C-Term) - Additional Information**

**Gene ID** 94

**Other Names**

Serine/threonine-protein kinase receptor R3, SKR3, 2.7.11.30, Activin receptor-like kinase 1, ALK-1, TGF-B superfamily receptor type I, TSR-I, ACVRL1, ACVRLK1, ALK1

**Format**

0.5 mg/ml in Tris saline, 0.02% sodium azide, pH7.3 with 0.5% bovine serum albumin

**Storage**

Maintain refrigerated at 2-8°C for up to 6 months. For long term storage store at -20°C in small aliquots to prevent freeze-thaw cycles.

**Precautions**

Activin receptor-like kinase 1 Antibody (C-Term) is for research use only and not for use in diagnostic or therapeutic procedures.

**Activin receptor-like kinase 1 Antibody (C-Term) - Protein Information**

**Name** ACVRL1

**Synonyms** ACVRLK1, ALK1

**Function**

Type I receptor for TGF-beta family ligands BMP9/GDF2 and BMP10 and important regulator of normal blood vessel development. On ligand binding, forms a receptor complex consisting of two type II and two type I transmembrane serine/threonine kinases. Type II receptors phosphorylate and activate type I receptors which autophosphorylate, then bind and activate SMAD transcriptional regulators. May bind activin as well.

### Cellular Location

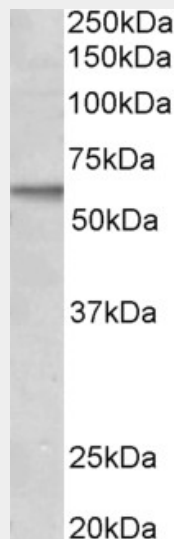
Cell membrane; Single-pass type I membrane protein

### Activin receptor-like kinase 1 Antibody (C-Term) - Protocols

Provided below are standard protocols that you may find useful for product applications.

- [Western Blot](#)
- [Blocking Peptides](#)
- [Dot Blot](#)
- [Immunohistochemistry](#)
- [Immunofluorescence](#)
- [Immunoprecipitation](#)
- [Flow Cytometry](#)
- [Cell Culture](#)

### Activin receptor-like kinase 1 Antibody (C-Term) - Images



AF2396a (2 µg/ml) staining of MCF7 lysate (35 µg protein in RIPA buffer). Primary incubation was 1 hour. Detected by chemiluminescence.

### Activin receptor-like kinase 1 Antibody (C-Term) - Background

Please note that this product is not to be confused with the similarly named ALK (anaplastic lymphoma kinase, GeneID 238). Reported variant represent identical protein: NP\_000011.2; NP\_001070869.1

### Activin receptor-like kinase 1 Antibody (C-Term) - References

Mutations in the activin receptor-like kinase 1 gene in hereditary haemorrhagic telangiectasia type 2. Johnson DW, Berg JN, Baldwin MA, Gallione CJ, Marondel I, Yoon SJ, Stenzel TT, Speer M, Pericak-Vance MA, Diamond A, Guttmacher AE, Jackson CE, Attisano L, Kucherlapati R, Porteous ME, Marchuk DA. Nat Genet. 1996 Jun;13(2):189-95. PMID: 8640225