

USP6 / TRE2 / TRE17 Antibody (C-Term)
Peptide-affinity purified goat antibody
Catalog # AF2340a

Specification

USP6 / TRE2 / TRE17 Antibody (C-Term) - Product Information

Application	WB
Primary Accession	P35125
Other Accession	NP_004496.1 , 9098
Reactivity	Human
Host	Goat
Clonality	Polyclonal
Concentration	0.5 mg/ml
Isotype	IgG
Calculated MW	158658

USP6 / TRE2 / TRE17 Antibody (C-Term) - Additional Information

Gene ID 9098

Other Names

Ubiquitin carboxyl-terminal hydrolase 6, 3.4.19.12, Deubiquitinating enzyme 6, Proto-oncogene TRE-2, Ubiquitin thioesterase 6, Ubiquitin-specific-processing protease 6, USP6, HRP1, TRE2

Format

0.5 mg/ml in Tris saline, 0.02% sodium azide, pH7.3 with 0.5% bovine serum albumin

Storage

Maintain refrigerated at 2-8°C for up to 6 months. For long term storage store at -20°C in small aliquots to prevent freeze-thaw cycles.

Precautions

USP6 / TRE2 / TRE17 Antibody (C-Term) is for research use only and not for use in diagnostic or therapeutic procedures.

USP6 / TRE2 / TRE17 Antibody (C-Term) - Protein Information

Name USP6

Synonyms HRP1, TRE2

Function

Deubiquitinase with an ATP-independent isopeptidase activity, cleaving at the C-terminus of the ubiquitin moiety. Catalyzes its own deubiquitination. In vitro, isoform 2, but not isoform 3, shows deubiquitinating activity. Promotes plasma membrane localization of ARF6 and selectively regulates ARF6-dependent endocytic protein trafficking. Is able to initiate tumorigenesis by inducing the production of matrix metalloproteinases following NF-kappa-B activation. May act as

a GTPase-activating protein for RAB3A (PubMed:19077034).

Cellular Location

Cell membrane. Cytoplasm. Endosome. Note=Localizes to the plasma membrane and to filamentous structures within the cell corresponding to ARF6 regulated tubular endosomes. Activation of RAC1 and CDC42 can direct the relocation of USP6 to the plasma membrane in a manner that depends on the integrity of the actin cytoskeleton

Tissue Location

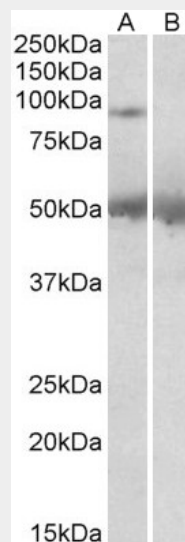
Testis specific. Expressed in various cancer cell lines.

USP6 / TRE2 / TRE17 Antibody (C-Term) - Protocols

Provided below are standard protocols that you may find useful for product applications.

- [Western Blot](#)
- [Blocking Peptides](#)
- [Dot Blot](#)
- [Immunohistochemistry](#)
- [Immunofluorescence](#)
- [Immunoprecipitation](#)
- [Flow Cytometry](#)
- [Cell Culture](#)

USP6 / TRE2 / TRE17 Antibody (C-Term) - Images



AF2340a (2 µg/ml) staining of Human Placenta lysate (35 µg protein in RIPA buffer) with (B) and without (A) blocking with the immunizing peptide. Primary incubation was 1 hour. Detected by chemiluminescence.

USP6 / TRE2 / TRE17 Antibody (C-Term) - References

The Tre2 (USP6) oncogene is a hominoid-specific gene. Paulding CA, Ruvolo M, Haber DA. Proc Natl Acad Sci U S A. 2003 Mar 4;100(5):2507-11. PMID: 12604796