

CBR3 Antibody (C-Term)
Peptide-affinity purified goat antibody
Catalog # AF2270a

Specification

CBR3 Antibody (C-Term) - Product Information

Application	WB
Primary Accession	O75828
Other Accession	NP_001227.1 , 874
Reactivity	Human
Predicted	Pig, Dog
Host	Goat
Clonality	Polyclonal
Concentration	0.5 mg/ml
Isotype	IgG
Calculated MW	30850

CBR3 Antibody (C-Term) - Additional Information

Gene ID 874

Other Names

Carbonyl reductase [NADPH] 3, 1.1.1.184, NADPH-dependent carbonyl reductase 3, CBR3

Format

0.5 mg/ml in Tris saline, 0.02% sodium azide, pH7.3 with 0.5% bovine serum albumin

Storage

Maintain refrigerated at 2-8°C for up to 6 months. For long term storage store at -20°C in small aliquots to prevent freeze-thaw cycles.

Precautions

CBR3 Antibody (C-Term) is for research use only and not for use in diagnostic or therapeutic procedures.

CBR3 Antibody (C-Term) - Protein Information

Name CBR3 ([HGNC:1549](#))

Function

Catalyzes the NADPH-dependent reduction of carbonyl compounds to their corresponding alcohols (PubMed: [18493841](http://www.uniprot.org/citations/18493841)). Has low NADPH- dependent oxidoreductase activity. Acts on several orthoquinones, acts as well on non-quinone compounds, such as isatin or on the anticancer drug oracin (PubMed: [15537833](http://www.uniprot.org/citations/15537833), PubMed: [18493841](http://www.uniprot.org/citations/18493841), PubMed: [19841672](http://www.uniprot.org/citations/19841672)). Best

substrates for CBR3 is 1,2- naphthoquinone, hence could play a role in protection against cytotoxicity of exogenous quinones (PubMed:19841672). Exerts activity toward ortho-quinones but not paraquinones. No endogenous substrate for CBR3 except isatin has been identified (PubMed:19841672).

Cellular Location

Cytoplasm.

Tissue Location

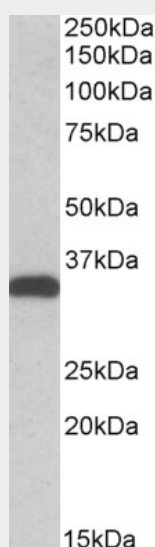
Detected in ovary, pancreas, intestine, colon, kidney, brain, thymus, lung, heart, liver, spleen, leukocyte, prostate and testis.

CBR3 Antibody (C-Term) - Protocols

Provided below are standard protocols that you may find useful for product applications.

- [Western Blot](#)
- [Blocking Peptides](#)
- [Dot Blot](#)
- [Immunohistochemistry](#)
- [Immunofluorescence](#)
- [Immunoprecipitation](#)
- [Flow Cytometry](#)
- [Cell Culture](#)

CBR3 Antibody (C-Term) - Images



AF2270a (0.5 µg/ml) staining of HEK293 lysate (35 µg protein in RIPA buffer). Primary incubation was 1 hour. Detected by chemiluminescence.

CBR3 Antibody (C-Term) - References

Mapping of a novel human carbonyl reductase, CBR3, and ribosomal pseudogenes to human chromosome 21q22.2. Watanabe K, Sugawara C, Ono A, Fukuzumi Y, Itakura S, Yamazaki M, Tashiro H, Osoegawa K, Soeda E, Nomura T. Genomics. 1998 Aug 15;52(1):95-100. PMID: 9740676